

APPENDICES



Appendix A
Correspondence

Applicant: Hanson Professional Services Inc.
Contact: Jeffrey L. Bushur
Address: 1525 South Sixth Street
Springfield, IL 62703

IDNR Project #: 1008349
Date: 04/13/2010

Project: Springfield Railroad Corridor Study
Address: Sixth Street, Springfield

Description: Determine how to accomodate rail traffic through Springfield.

Natural Resource Review Results

This project was submitted for information only. It is not a consultation under Part 1075.

The Illinois Natural Heritage Database shows the following protected resources may be in the vicinity of the project location:

Peregrine Falcon (*Falco peregrinus*)

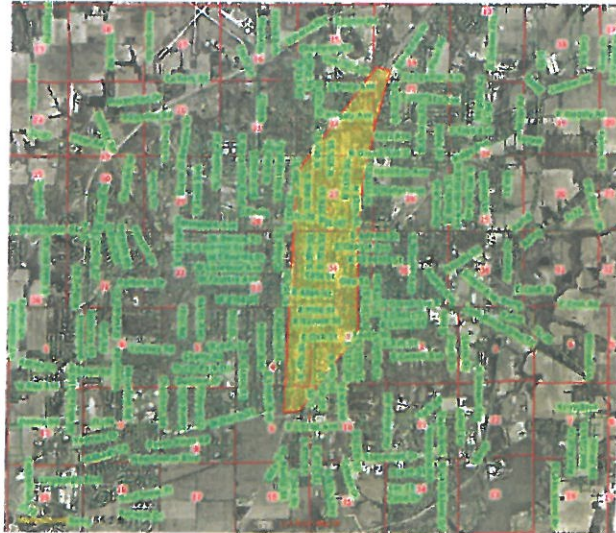
Location

The applicant is responsible for the accuracy of the location submitted for the project.

County: Sangamon

Township, Range, Section:

15N, 5W, 3	15N, 5W, 4
15N, 5W, 9	15N, 5W, 10
16N, 5W, 14	16N, 5W, 15
16N, 5W, 22	16N, 5W, 23
16N, 5W, 27	16N, 5W, 28
16N, 5W, 33	16N, 5W, 34



IL Department of Natural Resources Contact
Impact Assessment Section
217-785-5500
Division of Ecosystems & Environment

Disclaimer

The Illinois Natural Heritage Database cannot provide a conclusive statement on the presence, absence, or condition of natural resources in Illinois. This review reflects the information existing in the Database at the time of this inquiry, and should not be regarded as a final statement on the site being considered, nor should it be a substitute for detailed site surveys or field surveys required for environmental assessments. If additional protected resources are encountered during the project's implementation, compliance with applicable statutes and regulations is required.

Terms of Use

By using this website, you acknowledge that you have read and agree to these terms. These terms may be revised by IDNR as necessary. If you continue to use the EcoCAT application after we post changes to these terms, it will mean that you accept such changes. If at any time you do not accept the Terms of Use, you may not continue to use the website.

1. The IDNR EcoCAT website was developed so that units of local government, state agencies and the public could request information or begin natural resource consultations on-line for the Illinois Endangered Species Protection Act, Illinois Natural Areas Preservation Act, and Illinois Interagency Wetland Policy Act. EcoCAT uses databases, Geographic Information System mapping, and a set of programmed decision rules to determine if proposed actions are in the vicinity of protected natural resources. By indicating your agreement to the Terms of Use for this application, you warrant that you will not use this web site for any other purpose.
2. Unauthorized attempts to upload, download, or change information on this website are strictly prohibited and may be punishable under the Computer Fraud and Abuse Act of 1986 and/or the National Information Infrastructure Protection Act.
3. IDNR reserves the right to enhance, modify, alter, or suspend the website at any time without notice, or to terminate or restrict access.

Security

EcoCAT operates on a state of Illinois computer system. We may use software to monitor traffic and to identify unauthorized attempts to upload, download, or change information, to cause harm or otherwise to damage this site. Unauthorized attempts to upload, download, or change information on this server is strictly prohibited by law. Unauthorized use, tampering with or modification of this system, including supporting hardware or software, may subject the violator to criminal and civil penalties. In the event of unauthorized intrusion, all relevant information regarding possible violation of law may be provided to law enforcement officials.

Privacy

EcoCAT generates a public record subject to disclosure under the Freedom of Information Act. Otherwise, IDNR uses the information submitted to EcoCAT solely for internal tracking purposes.

September 3, 2010

Mike Stratton
Executive Director
Springfield Park District
Bunn Administrative Office
2500 South Eleventh Street
Springfield, IL 62703

Re: Springfield Railroad Corridor Study
Springfield, Sangamon County, Illinois
Hanson No. 09L0179A

Dear Mr. Stratton:

Hanson Professional Services Inc., on behalf of the City of Springfield and Sangamon County, Illinois, and in cooperation with the Illinois Department of Transportation (IDOT) and Federal Railroad Administration (FRA), is requesting any concerns or issues that should be addressed regarding the Springfield Railroad Corridor Study. This study will be incorporated into a Tier I Environmental Impact Statement for high-speed rail service from Chicago to St. Louis, which IDOT and FRA are currently initiating.

The Springfield Railroad Corridor Study is evaluating potential alternatives to improve rail capacity through Springfield to accommodate the proposed high-speed passenger trains from Chicago to St. Louis and the anticipated growth of freight traffic. Freight traffic through Springfield is expected to nearly double over the next ten years, and high-speed passenger train service between Chicago and St. Louis is planned to pass through Springfield in the near future. The study area extends from approximately Stanford Avenue on the south to Sangamon Avenue on the north within the City of Springfield, Sangamon County, Illinois (see Figure 1).

There are currently three north-south railroad corridors through Springfield. Generally, these corridors exist along Third Street (Union Pacific), Tenth Street (Norfolk Southern), and Nineteenth Street (Canadian National). There are 73 at-grade crossings along these three corridors in the study area, which create traffic congestion and safety issues when trains traverse the city (see Figure 2). The Union Pacific Railroad is constructing a new intermodal rail yard near Joliet, Illinois, which is anticipated to increase freight traffic on the Third Street corridor up to 22 freight trains per day. IDOT has received federal funding to construct a high-speed (110 mph) rail line from Chicago to St. Louis that will pass through Springfield. The combination of up to 18 passenger trains and 22 Union Pacific freight trains would require a second track on Third Street to accommodate a total of 40 trains per day.

A minimum of two build alternatives to accommodate this increase in rail traffic are being studied. The first build alternative involves adding a second track on the Third Street corridor to handle possibly 40 freight and passenger trains per day. The second build alternative considers moving the Third Street trains, and possibly the Nineteenth Street trains, to the Tenth Street corridor, which would consolidate the entire City's rail traffic into one railroad corridor. Consolidating all the trains along the Tenth Street corridor would require a total of three to five tracks to handle increased rail

traffic. Other reasonable alternatives will also be considered such as relocating rail traffic to a new corridor.

We look forward to your response to this request. If you have any questions regarding the preparation of the Springfield Railroad Corridor Study or would like to discuss the project in more detail, please contact Kevin Seals or me at (217) 788-2450 or kseals@hanson-inc.com.

Sincerely,

HANSON PROFESSIONAL SERVICES INC.

James W. Moll, P.E., S.E.
Assistant Vice President

Attachments

cc: George Weber – Illinois Department of Transportation
Wendy Messenger – Federal Railroad Administration
Chairman Andy Van Meter – Sangamon County
Mayor Timothy Davlin – City of Springfield



ILLINOIS ENVIRONMENTAL PROTECTION AGENCY

1021 North Grand Avenue East, P.O. Box 19276, Springfield, Illinois 62794-9276 • (217) 782-2829
James R. Thompson Center, 100 West Randolph, Suite 11-300, Chicago, IL 60601 • (312) 814-6026

PAT QUINN, GOVERNOR

DOUGLAS P. SCOTT, DIRECTOR

217-782-0547

September 16, 2010

Mr. James W. Moll, P. E., S. E.
Assistant Vice President
Hanson Professional Services, Inc.
1525 S. 6th Street
Springfield, Illinois 62703

Dear Mr. Moll:

The Agency has reviewed the proposed study for the Springfield Railroad Corridor Study for high-speed rail service from Chicago to St. Louis.

The Agency has no objections to the proposed project; however a construction site activity stormwater NPDES permit for more than one acre being disturbed during construction from the Division of Water Pollution Control will be required. For questions, you may contact Al Keller, 217-782-0610.

A permit from the Division of Public Water Supplies may also be required if any water mains are relocated due to the construction of rail. You may contact Jerry Kuhn, 217-782-9470, with questions relating to PWS permits.

Solid and hazardous waste must be properly disposed of or recycled.

Sincerely,

Lisa Bonnett
Acting Deputy Director

Cc: Steve McClarty
Freight Section Chief
Bureau of Railroads
100 West Randolph St., Ste 6-600
Chicago, IL 60601

Rockford • 4302 N. Main St., Rockford, IL 61103 • (815) 987-7760

Elgin • 595 S. State, Elgin, IL 60123 • (847) 608-3131

Bureau of Land – Peoria • 7620 N. University St., Peoria, IL 61614 • (309) 693-5462

Collinsville • 2009 Mall Street, Collinsville, IL 62234 • (618) 346-5120

Des Plaines • 9511 W. Harrison St., Des Plaines, IL 60016 • (847) 294-4000

Peoria • 5415 N. University St., Peoria, IL 61614 • (309) 693-5463

Champaign • 2125 S. First St., Champaign, IL 61820 • (217) 278-5800

Marion • 2309 W. Main St., Suite 116, Marion, IL 62959 • (618) 993-7200



Pat Quinn, Governor
Thomas E. Jennings, Director

Bureau of Land and Water Resources

State Fairgrounds • P.O. Box 19281 • Springfield, IL 62794-9281 • 217/782-6297 • TDD 217/524-6858 • Fax 217/557-0993

September 17, 2010

Mr. James W. Moll, P.E., S.E.
Hanson Professional Services Inc
1525 South Sixth Street
Springfield, Illinois 62703-2886

Re: Springfield Railroad Corridor Study
Springfield, Sangamon County, Illinois
Hanson No. 09L0179A

Dear Mr. Moll:

The Illinois Department of Agriculture (IDOA) appreciates the opportunity to submit concerns and issues regarding the Springfield Railroad Corridor Study for its consistency with IDOT's Agricultural Land Preservation Policy as well as its compliance with Illinois' Farmland Preservation Act (505 ILCS 75/1 et seq.).

The study area extends from approximately Stanford Avenue on the south to Sangamon Avenue on the north within the City of Springfield, Sangamon County, Illinois. Because the entire study area is within Springfield's corporate boundaries, the selection of a corridor will not result in any agricultural impacts.

Therefore, the IDOA has no comments to offer towards the evaluation and selection of a high-speed railroad corridor through Springfield, Illinois.

Sincerely,

A handwritten signature in cursive script that reads "Steven D. Chard".

Steven D. Chard, Acting Chief
Bureau of Land and Water Resources

SDC:TS

cc: Sangamon County SWCD
Agency project file

Kevin Seals

From: Steil, Russ [Russ.Steil@illinois.gov]
Sent: Friday, September 17, 2010 4:33 PM
To: Kevin Seals
Subject: RE: Springfield Railroad Corridor Study/Hanson No. 09L0179A

Thank ou for your reply, Mr. Seals. Russ Steil

From: Kevin Seals [mailto:KSeals@hanson-inc.com]
Sent: Friday, September 17, 2010 3:54 PM
To: Steil, Russ
Cc: Jim Moll; Rebecca Bennett; Atia Thurman
Subject: RE: Springfield Railroad Corridor Study/Hanson No. 09L0179A

Mr. Steil, thank you for your comments regarding the Springfield Railroad Corridor Study. We will take your comments into consideration during our analysis of various alternatives. We anticipate sharing our study alternatives with the public at an informational meeting later this fall. Please check our project website periodically for details. Feel free to contact us at any time for more information about this project.

www.springfieldrailroad.com



Engineering | Architecture | Planning | Allied Services

Kevin M. Seals
Partner/Senior Environmental Scientist
Hanson Professional Services Inc.
1525 S. Sixth St.
Springfield, IL 62703-2886
Phone: (217) 747-9222 Cell: (309) 267-7205
www.hanson-inc.com
Hanson - Hands On.™ *It's how we work.*

From: Steil, Russ [mailto:Russ.Steil@illinois.gov]
Sent: Friday, September 17, 2010 2:53 PM
To: Kevin Seals
Subject: FW: Springfield Railroad Corridor Study/Hanson No. 09L0179A

From: Steil, Russ
Sent: Friday, September 17, 2010 2:35 PM
To: 'ksals@hanson-inc.com'
Subject: Springfield Railroad Corridor Study/Hanson No. 09L0179A

Dear Mr. Seals;

Thank you for the information regarding the Springfield Railroad Corridor Study and the request for my input. I submit the following observations:

The consolidation of 3rd Street and 19th Street corridors to the 10th Street Corridor streamlines the traffic but presents life safety and property issues.

Currently, I think there are only two existing underpasses which accommodate the 10th Street Corridor; Cook Street and So. Grand. What role does the underpass at 6th and Princeton play? What role does the underpass on Sangamon Ave support?

The waiting period, time delays, traffic stoppage on the 10th Street Corridor and the location of five tracks serving multiple freight trains carrying hazardous materials while sharing the proximity with high speed passenger trains sets the stage for certain disaster. The mercantile and residential areas along the 10th Street Corridor would suffer serious, long lasting adverse impact. Emergency Response vehicles would lose precious arrival times and the potential for vehicular accidents would increase.

Where would the new corridor be located? I respectfully submit that **RELOCATING RAIL TRAFFIC TO A NEW CORRIDOR** would be most reasonable.

Respectfully,
Russ Steil
Regional Coordinator, IEMA

Disclaimer

This entire e-mail may contain confidential information belonging to the sender which is legally privileged. This information is intended only for the use of the individual(s) or entity named above. If you are not the intended recipient you are hereby notified that any disclosure, copying, distribution or the taking of any action in reliance on the contents of this information is strictly prohibited. If you have received this e-mail in error please notify the sender immediately by e-mail and then delete this e-mail from your system.
Mail delivered by Hanson Professional Services Inc. mail system.

UNIVERSITY OF ILLINOIS
AT URBANA - CHAMPAIGN

Institute of Natural Resource Sustainability
Illinois State Geological Survey
615 East Peabody Drive MC-650
Champaign, IL 61820



September 23, 2010

Mr. James W. Moll
Hanson Professional Services Inc.
1525 S. Sixth Street
Springfield, IL 62703

Re: Springfield Railroad Corridor Study
Hanson No. 09L0179A

Dear Mr. Moll:

There are several areas of concerns in the Springfield area for corridors for high speed rail construction that our staff have raised. The Springfield area has many abandoned underground coal mines as shown in: <http://www.isgs.illinois.edu/maps-data-pub/coal-maps/topo-mines/springfield.pdf> and <http://www.isgs.illinois.edu/maps-data-pub/coal-maps/counties/sangamon.shtml>. Coal mine subsidence has occurred and continues to occur over many of these mines in the Springfield area causing damage to buildings and roadways. During the last year, it was reported that suspected coal mine subsidence had derailed a freight train in southwestern Will County showing that subsidence can have an effect on rail traffic. This location had depressions develop under the railroad bed causing the derailment.

Other general concerns are the standard soil properties and their related issues: Attached is a USDA Web Soil Survey that was custom made for the area of interest in downtown Springfield. From a surface soil standpoint, there are only the usual issues with high water tables and clay rich, poorly drained loess soils (such as Sable Silt Loam). The attachment is for road construction and assumes laying a road directly on the A horizon of the soil without any removal of soil or addition of fill for the railroad. The red areas on the map are the normal type of poorly drained soils that are all around the state and can be easily remediated.

Also construction through an urban area will encounter contamination issues associated with past historical use of the properties or nearby properties.

If you have any questions or need clarification, please let me know.

Sincerely,

E. Donald McKay III, PhD, RPG
Director and State Geologist

Suitability for Roads (Natural Surface)—Sangamon County, Illinois

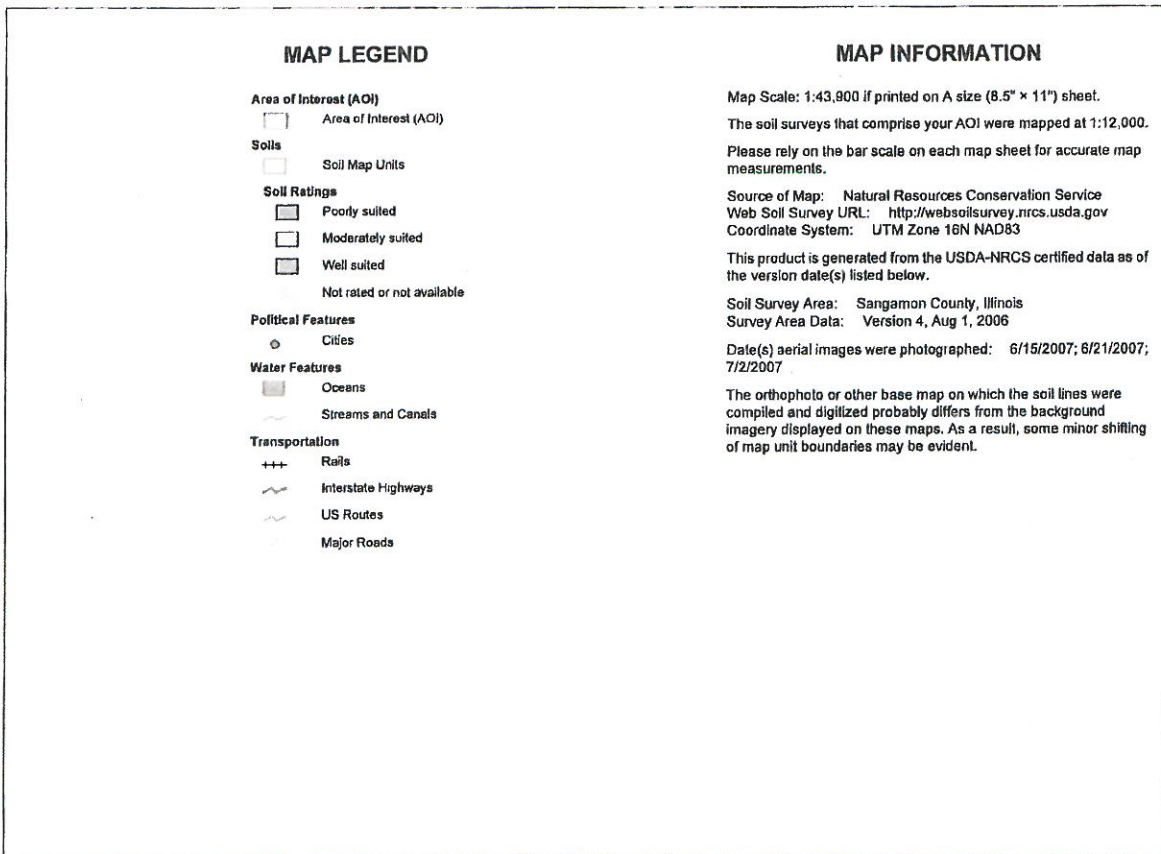


Map Scale: 1:43,900 if printed on A size (8.5" x 11") sheet.

0 400 800 1,600 2,400 Meters

0 1,500 3,000 6,000 9,000 Feet

Suitability for Roads (Natural Surface)-Sangamon County, Illinois



Suitability for Roads (Natural Surface)

Suitability for Roads (Natural Surface)— Summary by Map Unit — Sangamon County, Illinois						
Map unit symbol	Map unit name	Rating	Component name (percent)	Rating reasons (numeric values)	Acres in AGI	Percent of AGI
8D2	Hickory loam, 10 to 18 percent slopes, eroded	Poorly suited	Hickory (91%)	Slope (1.00)	11.6	0.1%
				Low strength (0.50)		
			Marseilles (2%)	Slope (1.00)		
				Low strength (0.50)		
			Atlas (2%)	Slope (1.00)		
				Wetness (0.50)		
Low strength (0.50)						
8F	Hickory silt loam, 18 to 35 percent slopes	Poorly suited	Hickory (91%)	Slope (1.00)	22.3	0.2%
				Low strength (0.50)		
17A	Keomah silt loam, 0 to 2 percent slopes	Moderately suited	Keomah (90%)	Wetness (0.50)	109.5	1.1%
				Low strength (0.50)		
43A	Ipava silt loam, 0 to 2 percent slopes	Moderately suited	Ipava (88%)	Low strength (0.50)	2,987.0	31.0%
				Wetness (0.50)		
45A	Denny silt loam, 0 to 2 percent slopes	Poorly suited	Denny (94%)	Ponding (1.00)	1.9	0.0%
				Wetness (1.00)		
				Low strength (0.50)		
68A	Sable silty clay loam, 0 to 2 percent slopes	Poorly suited	Sable (94%)	Ponding (1.00)	2,817.2	29.3%
				Wetness (1.00)		
				Low strength (0.50)		
86B	Osco silt loam, 2 to 5 percent slopes	Moderately suited	Osco (90%)	Low strength (0.50)	1,077.9	11.2%
86C2	Osco silt loam, 5 to 10 percent slopes, eroded	Moderately suited	Osco (90%)	Low strength (0.50)	32.4	0.3%
				Slope (0.50)		
118D	Elco silt loam, 10 to 18 percent slopes	Poorly suited	Elco (97%)	Slope (1.00)	3.2	0.0%
				Low strength (0.50)		
119D2	Elco silt loam, 10 to 18 percent slopes, eroded	Poorly suited	Elco (94%)	Slope (1.00)	98.2	1.0%
				Low strength (0.50)		

Suitability for Roads (Natural Surface)—Sangamon County, Illinois

Suitability for Roads (Natural Surface)— Summary by Map Unit — Sangamon County, Illinois						
Map unit symbol	Map unit name	Rating	Component name (percent)	Rating reasons (numeric values)	Acres in AOI	Percent of AOI
119D3	Elco silty clay loam, 10 to 18 percent slopes, severely eroded	Poorly suited	Elco (84%)	Slope (1.00)	49.1	0.5%
				Low strength (0.50)		
244A	Hartsburg silty clay loam, 0 to 2 percent slopes	Poorly suited	Hartsburg (95%)	Ponding (1.00)	67.7	0.7%
				Wetness (1.00)		
				Low strength (0.50)		
			Drummer (3%)	Ponding (1.00)		
				Wetness (1.00)		
				Low strength (0.50)		
			Harpster (1%)	Ponding (1.00)		
				Wetness (1.00)		
				Low strength (0.50)		
257A	Clarksdale silt loam, 0 to 2 percent slopes	Moderately suited	Clarksdale (93%)	Wetness (0.50)	22.4	0.2%
				Low strength (0.50)		
279B	Rozetta silt loam, 2 to 5 percent slopes	Moderately suited	Rozetta (91%)	Low strength (0.50)	642.1	6.7%
280C2	Fayette silt loam, 5 to 10 percent slopes, eroded	Moderately suited	Fayette (95%)	Low strength (0.50)	326.1	3.4%
				Slope (0.50)		
280D2	Fayette silt loam, 10 to 18 percent slopes, eroded	Poorly suited	Fayette (95%)	Slope (1.00)	0.7	0.0%
				Low strength (0.50)		
533	Urban land	Not rated	Urban land (100%)		1,033.6	10.7%
549G	Marseilles silt loam, 35 to 60 percent slopes	Poorly suited	Marseilles (97%)	Slope (1.00)	53.5	0.6%
				Low strength (0.50)		
567C2	Elkhart silt loam, 5 to 10 percent slopes, eroded	Moderately suited	Elkhart (97%)	Low strength (0.50)	9.5	0.1%
				Slope (0.50)		
			Ipava (3%)	Low strength (0.50)		
				Wetness (0.50)		

Suitability for Roads (Natural Surface)—Sangamon County, Illinois

Suitability for Roads (Natural Surface)— Summary by Map Unit — Sangamon County, Illinois											
Map unit symbol	Map unit name	Rating	Component name (percent)	Rating reasons (numeric values)	Acres in ACl	Percent of ACl					
630C2	Navlys silt loam, 5 to 10 percent slopes, eroded	Moderately suited	Navlys (93%)	Low strength (0.50)	14.2	0.1%					
				Slope (0.50)							
			Rozetta (3%)	Low strength (0.50)							
				Slope (0.50)							
			Bunkum (2%)	Low strength (0.50)							
				Slope (0.50)							
				Wetness (0.50)							
			Passport (2%)	Low strength (0.50)							
				Slope (0.50)							
				Wetness (0.50)							
			705B	Buckhart silt loam, 2 to 5 percent slopes			Moderately suited	Buckhart (93%)	Low strength (0.50)	82.4	0.6%
			801C	Orthents, silty, rolling			Moderately suited	Orthents, silty (88%)	Low strength (0.50)	16.4	0.2%
Slope (0.50)											
Rozetta (3%)	Low strength (0.50)										
Buckhart (3%)	Low strength (0.50)										
Ipava (3%)	Low strength (0.50)										
	Wetness (0.50)										
830	Landfills	Not rated			Orthents, landfill (90%)			15.7	0.2%		
3074A	Radford silt loam, 0 to 2 percent slopes, frequently flooded	Poorly suited			Radford (90%)	Flooding (1.00)		30.3	0.3%		
			Low strength (0.50)								
			Wetness (0.50)								
			Sawmill (8%)	Ponding (1.00)							
				Flooding (1.00)							
				Wetness (1.00)							
				Low strength (0.50)							

Suitability for Roads (Natural Surface)–Sangamon County, Illinois

Suitability for Roads (Natural Surface)– Summary by Map Unit – Sangamon County, Illinois											
Map unit symbol	Map unit name	Rating	Component name (percent)	Rating reasons (numeric values)	Acres in AOI	Percent of AOI					
3284A	Tice silty clay loam, 0 to 2 percent slopes, frequently flooded	Poorly suited	Tice (91%)	Flooding (1.00)	35.0	0.4%					
				Low strength (0.50)							
				Wetness (0.50)							
			Beaucoup (3%)	Ponding (1.00)							
				Flooding (1.00)							
				Wetness (1.00)							
			Sawmill (3%)	Low strength (0.50)							
				Ponding (1.00)							
				Flooding (1.00)							
				Wetness (1.00)							
			3451A	Lawson silt loam, 0 to 2 percent slopes, frequently flooded			Poorly suited	Lawson (92%)	Flooding (1.00)	52.6	0.5%
									Low strength (0.50)		
Wetness (0.50)											
Comfrey (2%)	Ponding (1.00)										
	Flooding (1.00)										
	Wetness (1.00)										
	Low strength (0.50)										
Zook (1%)	Ponding (1.00)										
	Flooding (1.00)										
	Wetness (1.00)										
	Low strength (0.50)										
Otter (1%)	Ponding (1.00)										
	Flooding (1.00)										
	Wetness (1.00)										
	Low strength (0.50)										
Sawmill (1%)	Ponding (1.00)										
	Flooding (1.00)										
	Wetness (1.00)										
	Low strength (0.50)										
7242A	Kendall silt loam, 0 to 2 percent slopes, rarely flooded	Moderately suited	Kendall (88%)	Wetness (0.50)	14.5	0.2%					
				Low strength (0.50)							

Suitability for Roads (Natural Surface)—Sangamon County, Illinois

Suitability for Roads (Natural Surface)— Summary by Map Unit — Sangamon County, Illinois						
Map unit symbol	Map unit name	Rating	Component name (percent)	Rating reasons (numeric values)	Acres in AOI	Percent of AOI
W	Water	Not rated	Water (100%)		13.8	0.1%
Totals for Area of Interest					9,620.8	100.0%

Suitability for Roads (Natural Surface)— Summary by Rating Value		
Rating	Acres in AOI	Percent of AOI
Moderately suited	5,314.4	55.2%
Poorly suited	3,243.1	33.7%
Null or Not Rated	1,063.2	11.1%
Totals for Area of Interest	9,620.8	100.0%

Description

The ratings in this interpretation indicate the suitability for using the natural surface of the soil for roads. The ratings are based on slope, rock fragments on the surface, plasticity index, content of sand, the Unified classification of the soil, depth to a water table, ponding, flooding, and the hazard of soil slippage.

The ratings are both verbal and numerical. The soils are described as "well suited," "moderately suited," or "poorly suited" to this use. "Well suited" indicates that the soil has features that are favorable for the specified kind of roads and has no limitations. Good performance can be expected, and little or no maintenance is needed. "Moderately suited" indicates that the soil has features that are moderately favorable for the specified kind of roads. One or more soil properties are less than desirable, and fair performance can be expected. Some maintenance is needed. "Poorly suited" indicates that the soil has one or more properties that are unfavorable for the specified kind of roads. Overcoming the unfavorable properties requires special design, extra maintenance, and costly alteration.

Numerical ratings indicate the severity of individual limitations. The ratings are shown as decimal fractions ranging from 0.01 to 1.00. They indicate gradations between the point at which a soil feature has the greatest negative impact on the specified aspect of forestland management (1.00) and the point at which the soil feature is not a limitation (0.00).

The map unit components listed for each map unit in the accompanying Summary by Map Unit table in Web Soil Survey or the Aggregation Report in Soil Data Viewer are determined by the aggregation method chosen. An aggregated rating class is shown for each map unit. The components listed for each map unit are only those that have the same rating class as listed for the map unit. The percent composition of each component in a particular map unit is presented to help the user better understand the percentage of each map unit that has the rating presented.

Other components with different ratings may be present in each map unit. The ratings for all components, regardless of the map unit aggregated rating, can be viewed by generating the equivalent report from the Soil Reports tab in Web Soil Survey or from the Soil Data Mart site. Onsite investigation may be needed to validate these interpretations and to confirm the identity of the soil on a given site.

Rating Options

Aggregation Method: Dominant Condition

Component Percent Cutoff: None Specified

Tie-break Rule: Higher



**Illinois Historic
Preservation Agency**

FAX (217) 782-8161

1 Old State Capitol Plaza • Springfield, Illinois 62701-1512 • www.illinois-history.gov

Sangamon County
Springfield

Springfield Railroad Corridor Study
Third St., 10th St. and 19th St. Tracks between Stanford Avenue and Sangamon
Avenue
IHPA Log #017090710

October 4, 2010

James W. Moll
Hanson Engineers Incorporated
1525 South Sixth Street
Springfield, IL 62703

Dear Mr. Moll:

Thank you for your letter concerning the Springfield Railroad Corridor Study requesting our comments in accordance with section 106 of the National Historic Preservation Act of 1966, as amended.

This study should take into account effects of any corridor studied on resources of historic, architectural and archaeological significance, particularly those listed on the National Register of Historic Places. You should also be aware that there are several National Historic Landmarks within the study area. Should any possible adverse effects be proposed in proximity to these resources, the Advisory Council on Historic Preservation and the National Park Service will need to participate in the 106 consultation process.

We look forward to discussing this with you further as the study progresses.

Sincerely,

Anne E. Haaker
Deputy State Historic
Preservation Officer

c: Blythe Semmer, Advisory Council on Historic Preservation



REPLY TO
ATTENTION OF

DEPARTMENT OF THE ARMY
ROCK ISLAND DISTRICT CORPS OF ENGINEERS
PO BOX 2004
ROCK ISLAND, IL: 61204-2004

October 8, 2010

Planning, Programs, and
Project Management Division

Mr. James W. Moll, P.E., S.E.
Assistant Vice President
Hanson Professional Services Inc.
1525 S. Sixth St.
Springfield, Illinois 62703

Dear Mr. Moll:

I received your letter dated September 3, 2010, concerning the Springfield Railroad Corridor Study, Springfield, Illinois (Hanson No. 09L0179A). Rock Island District Corps of Engineers staff reviewed the information you provided and have the following comments:

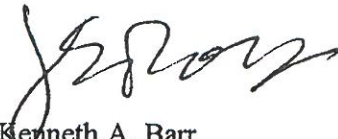
- a. Your proposal does not involve Rock Island District administered land; therefore, no further Rock Island District real estate coordination is necessary.
- b. Any proposed placement of dredged or fill material into waters of the United States (including jurisdictional wetlands) requires Department of the Army authorization under Section 404 of the Clean Water Act. We require additional details of your project before we can make a final determination of permit requirements. When the boundaries of the proposed project area have been determined, please complete and submit an application packet to the Rock Island District for processing.
- c. The Responsible Federal Agency should coordinate with Ms. Anne Haaker the Illinois State Historic Preservation Officer, 1 Old State Capitol Plaza, Springfield, Illinois 62704 to determine impacts to historic properties.
- d. The Rock Island Field Office of the U.S. Fish and Wildlife Service should be contacted to determine if any federally-listed endangered species are being impacted and, if so, how to avoid or minimize impacts. The Rock Island (County) Field Office address is: 1511 - 47th Avenue, Moline, Illinois 61265. Mr. Rick Nelson is the Field Supervisor. You can reach him by calling 309/757-5800.

e. The Illinois Emergency Management Agency should be contacted to determine if the proposed project may impact areas designated as floodway. Mr. Ron Davis is the Illinois State Hazard Mitigation Officer. His address is: 1035 Outer Park, 1st Floor, Springfield, Illinois 62704. You can reach him by calling 217/782-8719.

No other concerns surfaced during our review. Thank you for the opportunity to comment on your proposal. If you need more information, please call Mr. Randy Kraciun of our Environmental and Economics Branch, telephone 309/794-5174.

You may find additional information about the Corps' Rock Island District on our website at <http://www.mvr.usace.army.mil>. To find out about other Districts within the Corps, you may visit: <http://www.usace.army.mil/about/Pages/Locations.aspx>.

Sincerely,

A handwritten signature in black ink, appearing to read 'K. Barr', is written over the typed name.

Kenneth A. Barr
Chief, Environmental and
Economics Branch



U.S. DEPARTMENT OF COMMERCE
Economic Development Administration
CHICAGO REGIONAL OFFICE
111 N. CANAL ST., SUITE 855
CHICAGO, ILLINOIS 60606-7208

NOV 2 - 2010

Mr. James W. Moll, P.E., S.E.
Assistant Vice President
Hanson Professional Services, Inc.
1525 S. Sixth Street
Springfield, IL 62703

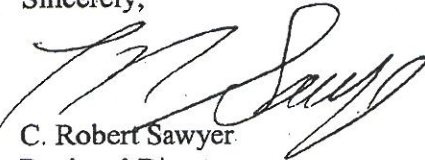
Dear Mr. Moll:

Thank you for your letter dated September 3, 2010 requesting Economic Development Administration (EDA) comments which regards to the Springfield Railroad Corridor Study. EDA's mission is to generate jobs, help retain existing jobs, and stimulate industrial and commercial growth in economically distressed areas. This is accomplished through grant programs that are available to rural and urban areas experiencing high unemployment, low income, or other severe economic distress.

At this point, EDA does not have any concerns or issues that need to be addressed regarding the high-speed rail service from Chicago to St. Louis. If you have any other concerns or questions, you may contact Robin D. Bush, Coordinator, Environmental & Strategic Analysis at 312-353-8143 ext. 146.

EDA encourages investments that will significantly benefit areas experiencing or threatened with substantial economic distress and has the potential to increase high wage jobs and private sector investment. We appreciate your recognition of EDA and its programs.

Sincerely,


C. Robert Sawyer
Regional Director



United States Department of the Interior

FISH AND WILDLIFE SERVICE
Rock Island Field Office
1511 47th Avenue
Moline, Illinois 61265
Phone: (309) 757-5800 Fax: (309) 757-5807



IN REPLY REFER
TO:

FWS/RIFO

November 9, 2010

Mr. James W. Moll, P.E., S.E.
Hanson Professional Services, Inc.
1525 South Sixth Street
Springfield, Illinois 62703

Dear Mr. Moll:

This is in response to your letter of September 3, 2010, requesting our comments on the proposed Springfield Railroad Corridor Study. This study will be incorporated into a Tier I Environmental Impact Statement for high-speed rail service from Chicago to St. Louis. This study will evaluate alternatives to improve rail capacity through Springfield to accommodate the proposed high-speed passenger trains from Chicago to St. Louis and the anticipated growth of freight traffic. The study area extends from approximately Stanford Avenue on the south to Sangamon Avenue on the north within the City of Springfield, Sangamon County, Illinois. For the purposes of this letter we will provide information relative to the portion of the project described above.

Our data indicate that the species on the enclosed list may occur in Sangamon County. Descriptions of the habitat requirements are included with the list. You may use these descriptions to help you determine if there is suitable habitat within your project area.

In order to determine if your project "may affect" species on the enclosed list, we invite you to use a new tool the Service has designed to help with the consultation process – the Section 7(a)(2) Technical Assistance webpage (<http://www.fws.gov/midwest/endangered/section7/s7process/index.htm>). By following the instructions, you can determine what your action area is, whether listed species may be found within the action area, and if the project may affect listed species. You will find several products on the site that can streamline the consultation process for this and future projects. When determining if listed species may be located within a project area, you can download county specific species lists for all of the states in Region 3. Species specific best management practices will also eventually be available. Example letters and templates are available to assist

with documenting "no effect" determinations and preparing requests for "not likely to adversely affect" concurrence.

These comments are provided as technical assistance in accordance with the Endangered Species Act of 1973 (87 Stat. 884, as amended; 16 U.S.C. 1531 et seq).

National Wetland Inventory maps indicate that there may be wetlands within and adjacent to the project area. These areas may be affected by the proposed project. The Corps of Engineers is the Federal agency responsible for wetland regulation, and we recommend that you contact them for assistance in delineating the wetland types and acreage within the project boundary. Priority consideration should be given to avoid impacts to these wetland areas. Any future activities in the study area that would alter these wetlands may require a Section 404 permit. Unavoidable impacts will require a mitigation plan to compensate for any losses of wetland functions and values. The U.S. Army Corps of Engineers, Clock Tower Building, P.O. Box 2004, Rock Island, Illinois, 61201, should be contacted for information about the permit process.

If you have any questions regarding our comments, please contact Heidi Woerber of my staff at (309) 757-5800 extension 209.

Sincerely,



Richard C. Nelson
Field Supervisor

Enclosure

cc: ILDOT (Weber)
ILDNR (Hamer)

Habitat Descriptions for Federal Threatened and Endangered Species in Sangamon County, Illinois

Indiana bat - The endangered Indiana bat (*Myotis sodalis*) is known to occur in several Illinois counties. Potential habitat for this species occurs statewide. Therefore, Indiana bats are considered to potentially occur in any area with forested habitat in any county in Illinois.

Indiana bats migrate seasonally between winter hibernacula and summer roosting habitats. Winter hibernacula include caves and abandoned mines. Females form nursery colonies under the loose bark of trees (dead or alive) and/or cavities, where each female gives birth to a single young in June or early July. A single colony may utilize a number of roost trees during the summer, typically a primary roost tree and several alternates. The species or size of tree does not appear to influence whether Indiana bats utilize a tree for roosting provided the appropriate bark structure is present.

During the summer, the Indiana bat frequents the corridors of small streams with riparian woods as well as mature upland forests. It forages for insects along stream corridors, within the canopy of floodplain and upland forests, over clearings with early successional vegetation (old fields), along the borders of croplands, along wooded fencerows, over farm ponds, and in pastures.

Suitable summer habitat in Illinois is considered to have the following characteristics within a ½ mile radius of a project site:

- 1) forest cover of 15% or greater;
- 2) permanent water;
- 3) potential roost trees with 10% or more peeling or loose bark

If the project site contains any **habitat that fits the above description**, it may be necessary to conduct a survey to determine whether the bat is present. In addition, a search for this species should be made prior to any cave-impacting activities. If habitat is present or Indiana bats are known to be present, they must not be harmed, harassed, or disturbed when present, and this field office should be contacted for further assistance.

Eastern prairie fringed orchid - The eastern prairie fringed orchid (*Platanthera leucophaea*) is listed as threatened for Sangamon County, Illinois. It occupies wet grassland habitats. There is no critical habitat designated for this species. Federal regulations prohibit any commercial activity involving this species or the destruction, malicious damage, or removal of this species from Federal land or any other lands in knowing violation of State law or regulation, including State criminal trespass law. This species should be searched for whenever wet prairie remnants are encountered.

Sheepnose mussel - The project lies within the range of the freshwater sheepnose mussel (*Plethobasus cyphus*) that is declining throughout its national range and is currently a Federal Candidate species. Significant declines relative to its historical distribution and its small

isolated remaining populations continue to be threatened due to habitat loss and degradation. This species is currently going through the listing process and may be included in the list of threatened and endangered species in the near future.

The sheepsnose mussel is primarily a larger-stream species occurring mainly in shallow shoal habitats with moderate to swift currents over coarse sand and gravel but includes mud, cobble, and boulders as well. This includes larger rivers with deep runs, while those specimens found in streams occur mainly in stable flow refuges with little sediment turbidity.

At a minimum, project evaluations should contain delineations of whether or not sheepsnose mussel habitat occurs within project boundaries. In cases where the species is known to occur or potential habitat is rated moderate to high, surveys may be necessary. Please contact this office for further information should this species or their habitat be suspected. Habitat for the sheepsnose mussel can be found in Sangamon County.

Applicant: Hanson Professional Services Inc.
Contact: Greg Moushon
Address: 1525 South Sixth Street
Springfield, IL 62703

IDNR Project #: 1105479
Date: 12/02/2010

Project: Springfield Railroad Corridor Study
Address: South Sixth Street, Springfield

Description: Railroad Corridor Study

Natural Resource Review Results

This project was submitted for information only. It is not a consultation under Part 1075.

The Illinois Natural Heritage Database shows the following protected resources may be in the vicinity of the project location:

- Carpenter Park INAI Site
- Carpenter Park Nature Preserve
- Franklin'S Ground Squirrel (*Spermophilus franklinii*)
- Peregrine Falcon (*Falco peregrinus*)

Location

The applicant is responsible for the accuracy of the location submitted for the project.

County: Menard

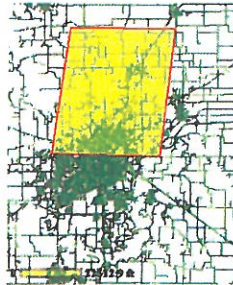
Township, Range, Section:

17N, 5W, 7 17N, 5W, 18

County: Sangamon

Township, Range, Section:

- | | |
|-------------|-------------|
| 16N, 4W, 5 | 16N, 4W, 6 |
| 16N, 4W, 7 | 16N, 4W, 8 |
| 16N, 4W, 17 | 16N, 4W, 18 |
| 16N, 4W, 19 | 16N, 4W, 20 |
| 16N, 4W, 29 | 16N, 4W, 30 |
| 16N, 5W, 1 | 16N, 5W, 2 |
| 16N, 5W, 3 | 16N, 5W, 4 |
| 16N, 5W, 5 | 16N, 5W, 6 |
| 16N, 5W, 7 | 16N, 5W, 8 |
| 16N, 5W, 9 | 16N, 5W, 10 |
| 16N, 5W, 11 | 16N, 5W, 12 |
| 16N, 5W, 13 | 16N, 5W, 14 |
| 16N, 5W, 15 | 16N, 5W, 16 |
| 16N, 5W, 17 | 16N, 5W, 18 |



16N, 5W, 19	16N, 5W, 20
16N, 5W, 21	16N, 5W, 22
16N, 5W, 23	16N, 5W, 24
16N, 5W, 25	16N, 5W, 26
16N, 5W, 27	16N, 5W, 28
16N, 5W, 29	16N, 5W, 30
16N, 6W, 24	16N, 6W, 25
17N, 4W, 7	17N, 4W, 8
17N, 4W, 9	17N, 4W, 16
17N, 4W, 17	17N, 4W, 18
17N, 4W, 19	17N, 4W, 20
17N, 4W, 21	17N, 4W, 28
17N, 4W, 29	17N, 4W, 30
17N, 4W, 31	17N, 4W, 32
17N, 4W, 33	17N, 5W, 8
17N, 5W, 9	17N, 5W, 10
17N, 5W, 11	17N, 5W, 12
17N, 5W, 13	17N, 5W, 14
17N, 5W, 15	17N, 5W, 16
17N, 5W, 17	17N, 5W, 19
17N, 5W, 20	17N, 5W, 21
17N, 5W, 22	17N, 5W, 23
17N, 5W, 24	17N, 5W, 25
17N, 5W, 26	17N, 5W, 27
17N, 5W, 28	17N, 5W, 29
17N, 5W, 30	17N, 5W, 31
17N, 5W, 32	17N, 5W, 33
17N, 5W, 34	17N, 5W, 35
17N, 5W, 36	

IL Department of Natural Resources Contact
Impact Assessment Section
217-785-5500
Division of Ecosystems & Environment

Disclaimer

The Illinois Natural Heritage Database cannot provide a conclusive statement on the presence, absence, or condition of natural resources in Illinois. This review reflects the information existing in the Database at the time of this inquiry, and should not be regarded as a final statement on the site being considered, nor should it be a substitute for detailed site surveys or field surveys required for environmental assessments. If additional protected resources are encountered during the project's implementation, compliance with applicable statutes and regulations is required.

Terms of Use

By using this website, you acknowledge that you have read and agree to these terms. These terms may be revised by IDNR as necessary. If you continue to use the EcoCAT application after we post changes to these terms, it will mean that you accept such changes. If at any time you do not accept the Terms of Use, you may not continue to use the website.

1. The IDNR EcoCAT website was developed so that units of local government, state agencies and the public could request information or begin natural resource consultations on-line for the Illinois Endangered Species Protection Act, Illinois Natural Areas Preservation Act, and Illinois Interagency Wetland Policy Act. EcoCAT uses databases, Geographic Information System mapping, and a set of programmed decision rules to determine if proposed actions are in the vicinity of protected natural resources. By indicating your agreement to the Terms of Use for this application, you warrant that you will not use this web site for any other purpose.
2. Unauthorized attempts to upload, download, or change information on this website are strictly prohibited and may be punishable under the Computer Fraud and Abuse Act of 1986 and/or the National Information Infrastructure Protection Act.
3. IDNR reserves the right to enhance, modify, alter, or suspend the website at any time without notice, or to terminate or restrict access.

Security

EcoCAT operates on a state of Illinois computer system. We may use software to monitor traffic and to identify unauthorized attempts to upload, download, or change information, to cause harm or otherwise to damage this site. Unauthorized attempts to upload, download, or change information on this server is strictly prohibited by law. Unauthorized use, tampering with or modification of this system, including supporting hardware or software, may subject the violator to criminal and civil penalties. In the event of unauthorized intrusion, all relevant information regarding possible violation of law may be provided to law enforcement officials.

Privacy

EcoCAT generates a public record subject to disclosure under the Freedom of Information Act. Otherwise, IDNR uses the information submitted to EcoCAT solely for internal tracking purposes.

Applicant: Hanson Professional Services Inc.
Contact: Greg Moushon
Address: 1525 South Sixth Street
Springfield, IL 62703

IDNR Project #: 1105477
Date: 12/02/2010

Project: Springfield Railroad Corridor Study
Address: South Sixth Street, Springfield

Description: Railroad Corridor Study

Natural Resource Review Results

This project was submitted for information only. It is not a consultation under Part 1075.

The Illinois Natural Heritage Database shows the following protected resources may be in the vicinity of the project location:

- South Fork Sangamon River INAI Site
- Black-Crowned Night Heron (*Nycticorax nycticorax*)
- Franklin'S Ground Squirrel (*Spermophilus franklinii*)
- Kirtland'S Snake (*Clonophis kirtlandi*)
- Lined Snake (*Tropidoclonion lineatum*)
- Peregrine Falcon (*Falco peregrinus*)

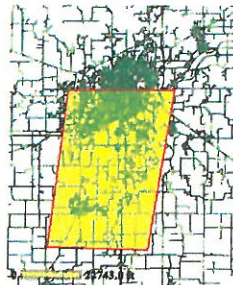
Location

The applicant is responsible for the accuracy of the location submitted for the project.

County: Sangamon

Township, Range, Section:

14N, 5W, 1	14N, 5W, 2
14N, 5W, 3	14N, 5W, 4
14N, 5W, 5	14N, 5W, 6
14N, 5W, 7	14N, 5W, 8
14N, 5W, 9	14N, 5W, 10
14N, 5W, 11	14N, 5W, 12
14N, 5W, 13	14N, 5W, 14
14N, 5W, 15	14N, 5W, 16
14N, 5W, 17	14N, 5W, 18
14N, 5W, 19	14N, 5W, 20
14N, 5W, 21	14N, 5W, 22
14N, 5W, 23	14N, 5W, 24
14N, 5W, 25	14N, 5W, 26
14N, 5W, 27	14N, 5W, 28
14N, 5W, 29	14N, 5W, 30



14N, 6W, 1	14N, 6W, 2
14N, 6W, 10	14N, 6W, 11
14N, 6W, 12	14N, 6W, 13
14N, 6W, 14	14N, 6W, 15
14N, 6W, 22	14N, 6W, 23
14N, 6W, 24	14N, 6W, 25
14N, 6W, 26	14N, 6W, 27
15N, 4W, 6	15N, 4W, 7
15N, 4W, 18	15N, 4W, 19
15N, 4W, 30	15N, 5W, 1
15N, 5W, 2	15N, 5W, 3
15N, 5W, 4	15N, 5W, 5
15N, 5W, 6	15N, 5W, 7
15N, 5W, 8	15N, 5W, 9
15N, 5W, 10	15N, 5W, 11
15N, 5W, 12	15N, 5W, 13
15N, 5W, 14	15N, 5W, 15
15N, 5W, 16	15N, 5W, 17
15N, 5W, 18	15N, 5W, 19
15N, 5W, 20	15N, 5W, 21
15N, 5W, 22	15N, 5W, 23
15N, 5W, 24	15N, 5W, 25
15N, 5W, 26	15N, 5W, 27
15N, 5W, 28	15N, 5W, 29
15N, 5W, 30	15N, 5W, 31
15N, 5W, 32	15N, 5W, 33
15N, 5W, 34	15N, 5W, 35
15N, 5W, 36	15N, 6W, 1
15N, 6W, 2	15N, 6W, 11
15N, 6W, 12	15N, 6W, 13
15N, 6W, 14	15N, 6W, 23
15N, 6W, 24	15N, 6W, 25
15N, 6W, 26	15N, 6W, 35
15N, 6W, 36	16N, 4W, 31
16N, 5W, 31	16N, 5W, 32
16N, 5W, 33	16N, 5W, 34
16N, 5W, 35	16N, 5W, 36
16N, 6W, 36	

IL Department of Natural Resources Contact
Impact Assessment Section
217-785-5500
Division of Ecosystems & Environment

Disclaimer

The Illinois Natural Heritage Database cannot provide a conclusive statement on the presence, absence, or condition of natural resources in Illinois. This review reflects the information existing in the Database at the time of this inquiry, and should not be regarded as a final statement on the site being considered, nor should it be a substitute for detailed site surveys or field surveys required for environmental assessments. If additional protected resources are encountered during the project's implementation, compliance with applicable statutes and regulations is required.

Terms of Use

By using this website, you acknowledge that you have read and agree to these terms. These terms may be revised by IDNR as necessary. If you continue to use the EcoCAT application after we post changes to these terms, it will mean that you accept such changes. If at any time you do not accept the Terms of Use, you may not continue to use the website.

1. The IDNR EcoCAT website was developed so that units of local government, state agencies and the public could request information or begin natural resource consultations on-line for the Illinois Endangered Species Protection Act, Illinois Natural Areas Preservation Act, and Illinois Interagency Wetland Policy Act. EcoCAT uses databases, Geographic Information System mapping, and a set of programmed decision rules to determine if proposed actions are in the vicinity of protected natural resources. By indicating your agreement to the Terms of Use for this application, you warrant that you will not use this web site for any other purpose.
2. Unauthorized attempts to upload, download, or change information on this website are strictly prohibited and may be punishable under the Computer Fraud and Abuse Act of 1986 and/or the National Information Infrastructure Protection Act.
3. IDNR reserves the right to enhance, modify, alter, or suspend the website at any time without notice, or to terminate or restrict access.

Security

EcoCAT operates on a state of Illinois computer system. We may use software to monitor traffic and to identify unauthorized attempts to upload, download, or change information, to cause harm or otherwise to damage this site. Unauthorized attempts to upload, download, or change information on this server is strictly prohibited by law. Unauthorized use, tampering with or modification of this system, including supporting hardware or software, may subject the violator to criminal and civil penalties. In the event of unauthorized intrusion, all relevant information regarding possible violation of law may be provided to law enforcement officials.

Privacy

EcoCAT generates a public record subject to disclosure under the Freedom of Information Act. Otherwise, IDNR uses the information submitted to EcoCAT solely for internal tracking purposes.



Illinois Historic
Preservation Agency

FAX (217) 782-8161

1 Old State Capitol Plaza • Springfield, Illinois 62701-1512 • www.illinois-history.gov

Various Counties

Chicago to St. Louis

High Speed Rail Project

Exact Route Not Yet Selected

IHPA Log #011091109

May 4, 2012

Kevin Seals

Hanson Professional Services Inc.

1525 S. Sixth St.

Springfield, IL 62703-2886

Dear Mr. Seals:

We have reviewed the April 24, 2012 letter report prepared by Fever River Research for the Springfield Rail Corridor Study, 10th Street Corridor. Despite the recommendation of the consultant, it is our decision that neither the Fireproof Storage House at 1000 E. Monroe nor the Peabody Coal Office Building at 2135 S. 9th Street retain sufficient integrity for listing on the National Register of Historic Places.

We look forward to consulting further as the project progresses.

Sincerely,

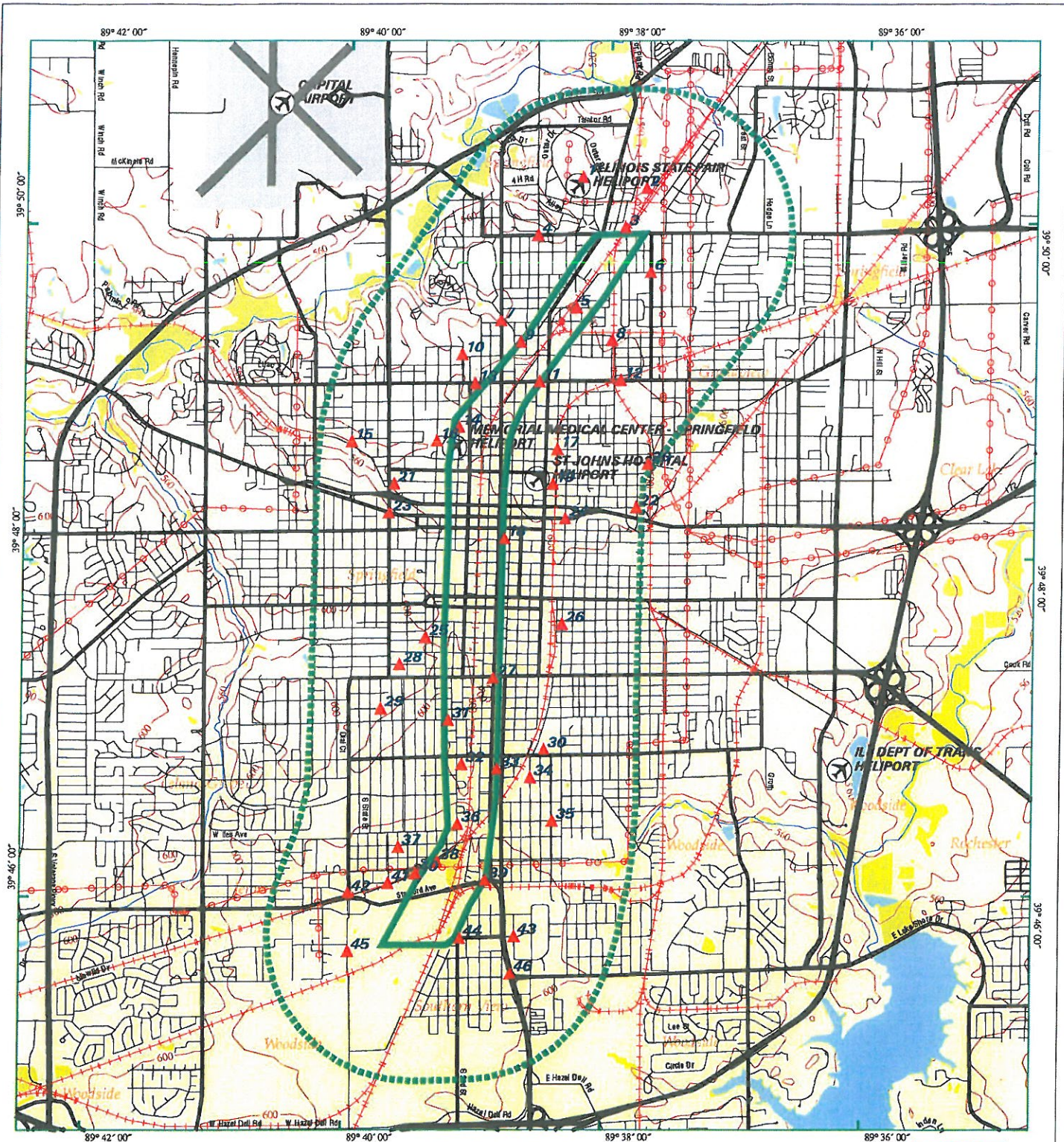
Anne E. Haaker

Deputy State Historic

Preservation Officer

c: Brad Koldehoff, Illinois Department of Transportation

Appendix B
Special Waste



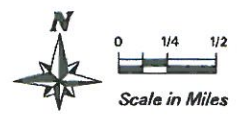
EDR DataMap® - Area Study

Third Street Corridor



Springfield, IL

- | | | |
|--|---------------|----------------------------|
| Listed Sites | Waterways | Water |
| Earthquake Epicenters (Richter 5 or greater) | Railroads | Superfund Sites |
| Search Boundary | Contour Lines | Federal DOD Sites |
| Roads | Pipelines | Indian Reservations BIA |
| Major Roads | Powerlines | National Wetland Inventory |
| | Fault Lines | |



EXECUTIVE SUMMARY

TARGET PROPERTY INFORMATION

ADDRESS

SPRINGFIELD, IL 62701
SPRINGFIELD, IL 62701

DATABASES WITH NO MAPPED SITES

No mapped sites were found in EDR's search of available ("reasonably ascertainable ") government records within the requested search area for the following databases:

FEDERAL RECORDS

NPL.....	National Priority List
Proposed NPL.....	Proposed National Priority List Sites
Delisted NPL.....	National Priority List Deletions
NPL LIENS.....	Federal Superfund Liens
LIENS 2.....	CERCLA Lien Information
RCRA-TSDF.....	RCRA - Transporters, Storage and Disposal
US ENG CONTROLS.....	Engineering Controls Sites List
US INST CONTROL.....	Sites with Institutional Controls
DOT OPS.....	Incident and Accident Data
US CDL.....	Clandestine Drug Labs
US BROWNFIELDS.....	A Listing of Brownfields Sites
DOD.....	Department of Defense Sites
FUDS.....	Formerly Used Defense Sites
LUCIS.....	Land Use Control Information System
CONSENT.....	Superfund (CERCLA) Consent Decrees
ROD.....	Records Of Decision
UMTRA.....	Uranium Mill Tailings Sites
DEBRIS REGION 9.....	Torres Martinez Reservation Illegal Dump Site Locations
ODI.....	Open Dump Inventory
MINES.....	Mines Master Index File
TRIS.....	Toxic Chemical Release Inventory System
TSCA.....	Toxic Substances Control Act
SSTS.....	Section 7 Tracking Systems
ICIS.....	Integrated Compliance Information System
PADS.....	PCB Activity Database System
RADINFO.....	Radiation Information Database
RAATS.....	RCRA Administrative Action Tracking System
PCB TRANSFORMER.....	PCB Transformer Registration Database
COAL ASH EPA.....	Coal Combustion Residues Surface Impoundments List
SCRD DRYCLEANERS.....	State Coalition for Remediation of Drycleaners Listing
US HIST CDL.....	National Clandestine Laboratory Register
FEDERAL FACILITY.....	Federal Facility Site Information listing
COAL ASH DOE.....	Sleam-Electric Plan Operation Data
FEMA UST.....	Underground Storage Tank Listing

STATE AND LOCAL RECORDS

NPDES..... A Listing of Active Permits

EXECUTIVE SUMMARY

IL NIPC..... Solid Waste Landfill Inventory
DRYCLEANERS..... Illinois Licensed Drycleaners
IMPDMNT..... Surface Impoundment Inventory
BROWNFIELDS..... Municipal Brownfields Redevelopment Grant Program Project Descriptions

TRIBAL RECORDS

INDIAN RESERV..... Indian Reservations
INDIAN ODI..... Report on the Status of Open Dumps on Indian Lands
INDIAN LUST..... Leaking Underground Storage Tanks on Indian Land
INDIAN UST..... Underground Storage Tanks on Indian Land
INDIAN VCP..... Voluntary Cleanup Priority Listing

SURROUNDING SITES: SEARCH RESULTS

Surrounding sites were identified.

Page numbers and map identification numbers refer to the EDR Radius Map report where detailed data on individual sites can be reviewed.

Sites listed in ***bold italics*** are in multiple databases.

Unmappable (orphan) sites are not considered in the foregoing analysis.

FEDERAL RECORDS

CERCLIS: The Comprehensive Environmental Response, Compensation and Liability Information System contains data on potentially hazardous waste sites that have been reported to the USEPA by states, municipalities, private companies and private persons, pursuant to Section 103 of the Comprehensive Environmental Response, Compensation and Liability Act (CERCLA). CERCLIS contains sites which are either proposed to or on the National Priorities List (NPL) and sites which are in the screening and assessment phase for possible inclusion on the NPL.

A review of the CERCLIS list, as provided by EDR, and dated 06/30/2009 has revealed that there is 1 CERCLIS site within the searched area.

<u>Site</u>	<u>Address</u>	<u>Map ID</u>	<u>Page</u>
<i>PIERCE WASTE OIL</i>	<i>1925 E MADISON ST</i>	<i>22</i>	<i>385</i>

CERC-NFRAP: Archived sites are sites that have been removed and archived from the inventory of CERCLIS sites. Archived status indicates that, to the best of EPA's knowledge, assessment at a site has been completed and that EPA has determined no further steps will be taken to list this site on the National Priorities List (NPL), unless information indicates this decision was not appropriate or other considerations require a recommendation for listing at a later time. This decision does not necessarily mean that there is no hazard associated with a given site; it only means that, based upon available information, the location is not judged to be a potential NPL site.

A review of the CERC-NFRAP list, as provided by EDR, and dated 06/23/2009 has revealed that there are 4 CERC-NFRAP sites within the searched area.

<u>Site</u>	<u>Address</u>	<u>Map ID</u>	<u>Page</u>
<i>KYANIZE PAINTS INCORPORATED</i>	<i>1616 NORTH FOURTEENTH S</i>	<i>5</i>	<i>31</i>

EXECUTIVE SUMMARY

<u>Site</u>	<u>Address</u>	<u>Map ID</u>	<u>Page</u>
COMANCHE OIL CORP (SIA)	400 E JEFFERSON ST	18	316
STEWART-WARNER HOBBS CORPORATI	YALE BOULEVARD & ASH ST	30	490
FIAT-ALLIS CONSTRUCTION MACHIN	3000 S 6TH ST	43	577

CORRACTS: CORRACTS is a list of handlers with RCRA Corrective Action Activity. This report shows which nationally-defined corrective action core events have occurred for every handler that has had corrective action activity.

A review of the CORRACTS list, as provided by EDR, and dated 09/15/2009 has revealed that there are 4 CORRACTS sites within the searched area.

<u>Site</u>	<u>Address</u>	<u>Map ID</u>	<u>Page</u>
KYANIZE PAINTS INCORPORATED	1616 NORTH FOURTEENTH S	5	31
PIERCE WASTE OIL	1925 E MADISON ST	22	385
STEWART-WARNER HOBBS CORPORATI	YALE BOULEVARD & ASH ST	30	490
LINCOLNLAND COMMUNITY COLLEGE	815 S AIRPORT DR-A	41	568

RCRA-LQG: RCRAInfo is EPA's comprehensive information system, providing access to data supporting the Resource Conservation and Recovery Act (RCRA) of 1976 and the Hazardous and Solid Waste Amendments (HSWA) of 1984. The database includes selective information on sites which generate, transport, store, treat and/or dispose of hazardous waste as defined by the Resource Conservation and Recovery Act (RCRA). Large quantity generators (LQGs) generate over 1,000 kilograms (kg) of hazardous waste, or over 1 kg of acutely hazardous waste per month.

A review of the RCRA-LQG list, as provided by EDR, and dated 12/11/2009 has revealed that there is 1 RCRA-LQG site within the searched area.

<u>Site</u>	<u>Address</u>	<u>Map ID</u>	<u>Page</u>
STUVE CARRIAGE HOUSE	526 S 7TH ST	18	249

RCRA-SQG: RCRAInfo is EPA's comprehensive information system, providing access to data supporting the Resource Conservation and Recovery Act (RCRA) of 1976 and the Hazardous and Solid Waste Amendments (HSWA) of 1984. The database includes selective information on sites which generate, transport, store, treat and/or dispose of hazardous waste as defined by the Resource Conservation and Recovery Act (RCRA). Small quantity generators (SQGs) generate between 100 kg and 1,000 kg of hazardous waste per month.

A review of the RCRA-SQG list, as provided by EDR, and dated 12/11/2009 has revealed that there are 43 RCRA-SQG sites within the searched area.

<u>Site</u>	<u>Address</u>	<u>Map ID</u>	<u>Page</u>
MARTEL LABORATORY SERVICES INC	1438 SANGAMON AVE	3	8
CHAMPION GARAGE INC	820 BLACK AVE	5	28
NUTRONICS	1703 PEORIA RD	5	43
CASEYS GENERAL STORE	1900 PEORIA RD	5	51
LINCOLNLAND OIL BULK PLANT	2026 REPUBLIC DR	5	56
TMI ANALYTICAL SERVICES	2110 N REPUBLIC ST	5	62
NORFOLK AND WESTERN RAILWAY CO	MILE POST 417 STARNES T	9	74

EXECUTIVE SUMMARY

<u>Site</u>	<u>Address</u>	<u>Map ID</u>	<u>Page</u>
IEPA HHW COLLECTION	1021 NORTH GRAND AVE E	11	96
LEES DELUXE CLEANERS	1221 N 8TH ST	11	174
LUCKY LADY LAUNDRY CENTER	120 N GRAND AVE	13	186
SOUTHERN IL SCHOOL OF MEDICINE	801 N. RUTLEDGE	16	199
IEPA ORGANIC LAB	825 N RUTLEDGE	16	202
FRANKLIN LIFE	800 S 6TH	18	211
STOLDTS JACK SVC	717 S FIFTH	18	218
IL BELL	555 E COOK ST	18	223
AT&T	620 S 5TH ST	18	228
MARATHON OIL CO UNIT 1794	200 W EDWARDS AND SPRIN	18	241
SHUTT HOUSE	525 S EIGHTH ST	18	245
ILLINOIS STATE BAR ASSOCIATION	424 S 2ND ST	18	258
LINCOLNS HOME	413 8TH ST	18	260
STE CONTROLLER PRINT SHOP	325 W ADAMS	18	281
GIETL BROTHERS INC	109 S SECOND ST	18	295
ALZINA BUILDING	100 N FIRST	18	304
IL DEPT OF CENTRAL MGMT	101 W WASHINGTON	18	307
IL HISTORIC PRESERVATION AGENC	617 E JEFFERSON	18	309
SALLY WARD LAUNDRY CLEANERS IN	116 E JEFFERSON ST	18	323
IMPERIAL PLATING CO	313 W MADISON ST	18	340
MARCHAS BUILDING CORP	318 N 4TH ST	18	344
IL SECRETARY OF STATE COMM	319 N KLEIN	18	347
ST JOHNS HOSPITAL	800 CARPENTER ST	19	377
PRINTING CENTER THE	1620 S FIFTH ST	27	426
CONCORD CUSTOM CLEANERS 6041	128 S GRAND AVE	27	440
WESTERN AUTO	616 S GRAND E	27	454
STEWART-WARNER HOBBS CORPORATI	YALE BOULEVARD & ASH ST	30	490
IL CENTRAL MGMT SERV DEPT OF V	200 E ASH ST	32	523
BOLL PAINTING	2224 S 9TH ST	34	527
SEARS P/S 9660	2548 S FIRST ST	36	533
NIEMCZYK PAINTING & PAPER CO	312 B NORTH ST	38	540
KIMS AUTOBODY & PAINT	310 NORTH ST	38	543
AYERCO SELF SVC	430 STANFORD	39	556
WOODSIDE TOWNSHIP	490 NORTH ST	40	564
MATHEWS BILL AUTO BODY INC	750 W NORTH	41	566
LINCOLNLAND COMMUNITY COLLEGE	815 S AIRPORT DR-A	41	568

RCRA-CESQG: RCRAInfo is EPA's comprehensive information system, providing access to data supporting the Resource Conservation and Recovery Act (RCRA) of 1976 and the Hazardous and Solid Waste Amendments (HSWA) of 1984. The database includes selective information on sites which generate, transport, store, treat and/or dispose of hazardous waste as defined by the Resource Conservation and Recovery Act (RCRA). Conditionally exempt small quantity generators (CESQGs) generate less than 100 kg of hazardous waste, or less than 1 kg of acutely hazardous waste per month.

A review of the RCRA-CESQG list, as provided by EDR, and dated 12/11/2009 has revealed that there are 31 RCRA-CESQG sites within the searched area.

<u>Site</u>	<u>Address</u>	<u>Map ID</u>	<u>Page</u>
ONE HOUR MARTINIZING	1865 SANGAMON AVE	3	10
SOUTHERN PACIFIC TRANSP CO	1701 E SANGAMON ST	3	13
THOMAS AUTO PRECISION	1312 E MORTON	5	26
BYRNE, THOMAS	1650 N 14TH ST	5	38
YORK INTERNATIONAL	1615 PEORIA RD REAR	5	41

EXECUTIVE SUMMARY

<u>Site</u>	<u>Address</u>	<u>Map ID</u>	<u>Page</u>
<i>CREATIVE AUTOBODY</i>	<i>2008 N 14TH ST</i>	<i>5</i>	<i>59</i>
<i>WORLD WIDE REFINISHING SYSTEMS</i>	<i>11TH & JOLIS</i>	<i>5</i>	<i>65</i>
<i>HARPER OIL COMPANY</i>	<i>1028 N 9T ST</i>	<i>11</i>	<i>78</i>
<i>IEPA PRINT SHOP</i>	<i>1340 N 9TH ST</i>	<i>11</i>	<i>178</i>
<i>MEMORIAL MEDICAL CENTER</i>	<i>800 N RUTLEDGE</i>	<i>16</i>	<i>196</i>
<i>FRANKLIN LIFE</i>	<i>808 S. EIGHTH ST</i>	<i>18</i>	<i>213</i>
<i>ILLINOIS EDUCATION ASSOCIATION</i>	<i>100 E EDWARDS</i>	<i>18</i>	<i>243</i>
<i>FINDLEY PAUL FEDERAL BUILDING</i>	<i>600 EAST MONROE</i>	<i>18</i>	<i>271</i>
<i>SPRINGFIELD HILTON</i>	<i>700 E ADAMS ST</i>	<i>18</i>	<i>276</i>
<i>RENAISSANCE SPRINGFIELD HOTEL</i>	<i>701 E ADAMS</i>	<i>18</i>	<i>285</i>
<i>SCHNEPP & BARNES</i>	<i>412 E ADAMS</i>	<i>18</i>	<i>288</i>
<i>MYERS FAMILY REAL ESTATE LLC</i>	<i>1 W OLD STATE CAPITOL P</i>	<i>18</i>	<i>297</i>
<i>ISPRINGHAUSEN IMPORTS</i>	<i>229 E JEFFERSON</i>	<i>18</i>	<i>318</i>
<i>STATE OF IL EMERGENCY MGT</i>	<i>301 W MADISON</i>	<i>18</i>	<i>338</i>
<i>IL SECRETARY OF STATE POWER PL</i>	<i>KLEIN AND MASON</i>	<i>18</i>	<i>356</i>
<i>FORD PRINTING</i>	<i>418 N 2ND</i>	<i>18</i>	<i>359</i>
<i>SPRINGFIELD TIRE & ALIGNMENT</i>	<i>214 W REYNOLDS REAR</i>	<i>18</i>	<i>367</i>
<i>AMOCO, LESS</i>	<i>1700 S 5TH</i>	<i>27</i>	<i>423</i>
<i>HANSON PROFESSIONAL SERVICES I</i>	<i>1525 S 6TH ST</i>	<i>27</i>	<i>437</i>
<i>ONE HOUR MARTINIZING</i>	<i>1400 S EIGHTH ST</i>	<i>27</i>	<i>456</i>
<i>DAVIS CLEANERS</i>	<i>1205 S SECOND ST</i>	<i>27</i>	<i>461</i>
<i>IL STATE POLICE</i>	<i>2168 S NINTH ST</i>	<i>34</i>	<i>528</i>
<i>KIMS AUTOBODY AND PAINT</i>	<i>2714 S HOLMES AVE</i>	<i>37</i>	<i>538</i>
<i>FINKS CUSTOM DRAPERIES</i>	<i>2756 S 6TH</i>	<i>39</i>	<i>546</i>
<i>FURROW BLDG MATERIALS</i>	<i>2744 S 6TH</i>	<i>39</i>	<i>549</i>
<i>VERSTREATRA, TED</i>	<i>224 APPLE ORCHARD RD</i>	<i>44</i>	<i>596</i>

RCRA-NonGen: RCRAInfo is EPA's comprehensive information system, providing access to data supporting the Resource Conservation and Recovery Act (RCRA) of 1976 and the Hazardous and Solid Waste Amendments (HSWA) of 1984. The database includes selective information on sites which generate, transport, store, treat and/or dispose of hazardous waste as defined by the Resource Conservation and Recovery Act (RCRA). Non-Generators do not presently generate hazardous waste.

A review of the RCRA-NonGen list, as provided by EDR, and dated 12/11/2009 has revealed that there are 32 RCRA-NonGen sites within the searched area.

<u>Site</u>	<u>Address</u>	<u>Map ID</u>	<u>Page</u>
<i>TRUMAN L FLATT AND SONS INC</i>	<i>2300 NORTH 16TH STREET</i>	<i>3</i>	<i>18</i>
<i>PROFESSIONAL DEVELOPMENT CO</i>	<i>1545 N 11TH ST</i>	<i>5</i>	<i>24</i>
<i>KYANIZE PAINTS INCORPORATED</i>	<i>1616 NORTH FOURTEENTH S</i>	<i>5</i>	<i>31</i>
<i>SPRINGFIELD COLLEGE</i>	<i>1500 N 5TH ST</i>	<i>7</i>	<i>68</i>
<i>CHURCHILLS EUROSPOORT</i>	<i>1600 N MICHIGAN AVE</i>	<i>8</i>	<i>72</i>
<i>MURRAY</i>	<i>BROWNING RD</i>	<i>9</i>	<i>75</i>
<i>9TH ST AMOCO FOOD SHOP</i>	<i>1201 N 9TH</i>	<i>11</i>	<i>94</i>
<i>JEWEL FOOD STORES</i>	<i>909 E CONVERSE</i>	<i>11</i>	<i>180</i>
<i>SUNOCO SERVICE STATION</i>	<i>200 N GRAND AVE EAST</i>	<i>13</i>	<i>189</i>
<i>SPRINGFIELD MASS TRANSIT</i>	<i>928 S 9TH ST</i>	<i>18</i>	<i>207</i>
<i>FIRST OF AMERICA TRUST</i>	<i>737 E COOK ST</i>	<i>18</i>	<i>220</i>
<i>VACHEL LINDSEY HOME</i>	<i>603 S FIFTH ST</i>	<i>18</i>	<i>233</i>
<i>LUCENT TECHNOLOGIES INC</i>	<i>601 S SIXTH ST</i>	<i>18</i>	<i>236</i>
<i>ILLINOIS SECRETARY OF STATE</i>	<i>SECOND AND EDWARDS ST</i>	<i>18</i>	<i>237</i>
<i>EVCO NATIONAL</i>	<i>508 S 8TH ST</i>	<i>18</i>	<i>246</i>
<i>IL SUPREME COURT</i>	<i>400 S 2ND ST</i>	<i>18</i>	<i>266</i>

EXECUTIVE SUMMARY

<u>Site</u>	<u>Address</u>	<u>Map ID</u>	<u>Page</u>
<i>MARINE BANK TRUST DEPT</i>	<i>307 TO 309 S FOURTH</i>	<i>18</i>	<i>277</i>
<i>CHICAGO MISSOURI RAILWAY</i>	<i>3 W OLD CAPITOL PLAZA</i>	<i>18</i>	<i>293</i>
<i>TRAFFIC ENG SIGN SHOP</i>	<i>601 E JEFFERSON ST</i>	<i>18</i>	<i>313</i>
<i>IMPERIAL PLATING CORP</i>	<i>313 WEST MADISON</i>	<i>18</i>	<i>342</i>
<i>SPRINGFIELD DECATUR TRANSFER C</i>	<i>223 E UNION ST</i>	<i>18</i>	<i>374</i>
<i>LICATAS CLEANERS</i>	<i>822 E MILLER</i>	<i>19</i>	<i>382</i>
<i>PIERCE WASTE OIL</i>	<i>1925 E MADISON ST</i>	<i>22</i>	<i>385</i>
<i>STAAB BATTERY MFG CO INC</i>	<i>931 S ELEVENTH</i>	<i>26</i>	<i>415</i>
<i>PRINTING CENTER THE</i>	<i>1602 S FIFTH ST</i>	<i>27</i>	<i>427</i>
<i>SHERWIN WILLIAMS CO THE</i>	<i>1730 S 6TH ST</i>	<i>27</i>	<i>429</i>
<i>SUNOCO SERVICE STATION</i>	<i>601 S GRAND</i>	<i>27</i>	<i>451</i>
<i>ACE OIL SERVICES LTD</i>	<i>1118 S SIXTH ST</i>	<i>27</i>	<i>484</i>
<i>ILDOT BUR MTL S PHY RES</i>	<i>126 E ASH ST</i>	<i>32</i>	<i>516</i>
<i>FCA HOLDINGS INC</i>	<i>2720 HOLMES AVE</i>	<i>37</i>	<i>535</i>
<i>LUBE MASTER</i>	<i>415 E STANFORD</i>	<i>39</i>	<i>562</i>
<i>FIAT-ALLIS CONSTRUCTION MACHIN</i>	<i>3000 S 6TH ST</i>	<i>43</i>	<i>577</i>

ERNS: The Emergency Response Notification System records and stores information on reported releases of oil and hazardous substances. The source of this database is the U.S. EPA.

A review of the ERNS list, as provided by EDR, and dated 08/31/2009 has revealed that there are 2 ERNS sites within the searched area.

<u>Site</u>	<u>Address</u>	<u>Map ID</u>	<u>Page</u>
SOUTHERN ILL UNIV SCHOOL OF ME 320 E STANFORD AVE	SOUTHERN ILL UNIV SCHOO 320 E STANFORD AVE	5 39	24 561

HMIRS: The Hazardous Materials Incident Report System contains hazardous material spill incidents reported to the Department of Transportation. The source of this database is the U.S. EPA.

A review of the HMIRS list, as provided by EDR, and dated 10/05/2009 has revealed that there is 1 HMIRS site within the searched area.

<u>Site</u>	<u>Address</u>	<u>Map ID</u>	<u>Page</u>
Not reported	1309 RIDGELY AVENUE	5	48

FTTS: FTTS tracks administrative cases and pesticide enforcement actions and compliance activities related to FIFRA, TSCA and EPCRA (Emergency Planning and Community Right-to-Know Act) over the previous five years. To maintain currency, EDR contacts the Agency on a quarterly basis.

A review of the FTTS list, as provided by EDR, and dated 04/09/2009 has revealed that there is 1 FTTS site within the searched area.

<u>Site</u>	<u>Address</u>	<u>Map ID</u>	<u>Page</u>
<i>ENVIRONMENTAL SAFETY CONSULTAN</i>	<i>824 S 2ND ST</i>	<i>18</i>	<i>212</i>

EXECUTIVE SUMMARY

HIST FTTS: A complete administrative case listing from the FIFRA/TSCA Tracking System (FTTS) for all ten EPA regions. The information was obtained from the National Compliance Database (NCDB). NCDB supports the implementation of FIFRA (Federal Insecticide, Fungicide, and Rodenticide Act) and TSCA (Toxic Substances Control Act). Some EPA regions are now closing out records. Because of that, and the fact that some EPA regions are not providing EPA Headquarters with updated records, it was decided to create a HIST FTTS database. It included records that may not be included in the newer FTTS database updates. This database is no longer updated.

A review of the HIST FTTS list, as provided by EDR, and dated 10/19/2006 has revealed that there is 1 HIST FTTS site within the searched area.

<u>Site</u>	<u>Address</u>	<u>Map ID</u>	<u>Page</u>
<i>ENVIRONMENTAL SAFETY CONSULTAN</i>	<i>824 S 2ND ST</i>	<i>18</i>	<i>212</i>

MLTS: The Material Licensing Tracking System is maintained by the Nuclear Regulatory Commission and contains a list fo approximately 8,100 sites which possess or use radioactive materials and are subject to NRC licensing requirements.

A review of the MLTS list, as provided by EDR, and dated 09/25/2009 has revealed that there are 4 MLTS sites within the searched area.

<u>Site</u>	<u>Address</u>	<u>Map ID</u>	<u>Page</u>
ILLINOIS EMERGENCY SERV. & DIS	110 EAST ADAMS ST.	18	291
SPRINGFIELD IMAGING CTR. LTD.	319 EAST MADISON STREET	18	333
<i>HANSON PROFESSIONAL SERVICES I</i>	<i>1525 S 6TH ST</i>	<i>27</i>	<i>437</i>
ILLINOIS DEPT. OF TRANSPORTATI	126 EAST ASH STREET	32	516

FINDS: The Facility Index System contains both facility information and "pointers" to other sources of information that contain more detail. These include: RCRIS; Permit Compliance System (PCS); Aerometric Information Retrieval System (AIRS); FATES (FIFRA [Federal Insecticide Fungicide Rodenticide Act] and TSCA Enforcement System, FTTS [FIFRA/TSCA Tracking System]; CERCLIS; DOCKET (Enforcement Docket used to manage and track information on civil judicial enforcement cases for all environmental statutes); Federal Underground Injection Control (FURS); Federal Reporting Data System (FRDS); Surface Impoundments (SIA); TSCA Chemicals in Commerce Information System (CICS); PADS; RCRA-J (medical waste transporters/disposers); TRIS; and TSCA. The source of this database is the U.S. EPA/NTIS.

A review of the FINDS list, as provided by EDR, and dated 10/19/2009 has revealed that there are 170 FINDS sites within the searched area.

<u>Site</u>	<u>Address</u>	<u>Map ID</u>	<u>Page</u>
<i>MARTEL LABORATORY SERVICES INC</i>	<i>1438 SANGAMON AVE</i>	<i>3</i>	<i>8</i>
<i>ONE HOUR MARTINIZING</i>	<i>1865 SANGAMON AVE</i>	<i>3</i>	<i>10</i>
<i>TRUMAN L FLATT AND SONS INC</i>	<i>2300 NORTH 16TH STREET</i>	<i>3</i>	<i>18</i>
<i>PROFESSIONAL DEVELOPMENT CO</i>	<i>1545 N 11TH ST</i>	<i>5</i>	<i>24</i>
<i>THOMAS AUTO PRECISION</i>	<i>1312 E MORTON</i>	<i>5</i>	<i>26</i>
<i>CHAMPION GARAGE INC</i>	<i>820 BLACK AVE</i>	<i>5</i>	<i>28</i>
ROYS RADIATOR	1601 N 9TH ST	5	30
<i>KYANIZE PAINTS INCORPORATED</i>	<i>1616 NORTH FOURTEENTH S</i>	<i>5</i>	<i>31</i>
<i>YORK INTERNATIONAL</i>	<i>1615 PEORIA RD REAR</i>	<i>5</i>	<i>41</i>
LINCOLN YELLOW CAB	1700 FACTORY RD	5	43
<i>NUTRONICS</i>	<i>1703 PEORIA RD</i>	<i>5</i>	<i>43</i>
CAPITOL ENGRAVING CO	1703 PEORIA RD-A	5	47

EXECUTIVE SUMMARY

Site	Address	Map ID	Page
PRESTON TRUCKING CO	1309 RIDGELY AVE	5	47
FJ MURPHY & SON INC	1800 FACTORY AVE	5	49
FANCY AUTO REPAIR	1804 PEORIA RD	5	50
CASEYS GENERAL STORE	1900 PEORIA RD	5	51
MR TIRE	1921 PEORIA RD	5	53
LINCOLNLAND OIL BULK PLANT	2026 REPUBLIC DR	5	56
BRITZ AUTO	1303 GRIFFITHS	5	58
CREATIVE AUTOBODY	2008 N 14TH ST	5	59
TMI ANALYTICAL SVCS	2110 W REPUBLIC ST	5	62
SPRINGFIELD FIRE DEPT	PEORIA & PERCY	5	65
WORLD WIDE REFINISHING SYSTEMS	11TH & JOLES	5	65
LARGE, DEAN	517 RIDGELY	7	70
CHURCHILLS EUROSPORT	1600 N MICHIGAN AVE	8	72
NORFOLK AND WESTERN RAILWAY CO	MILE POST 417 STARNES T	9	74
MURRAY	BROWNING RD	9	75
STROH ANDERSON, INC.	1107 N. 6TH ST.	11	85
TUXHORN GARAGE	1158 N 6TH	11	87
BRAHLER OIL & LUBE INC	700 NORTH GRAND AVE E	11	88
NOONANS TRUE VALUE	801 NORTH GRAND AVE E	11	90
9TH ST AMOCO FOOD SHOP	1201 N 9TH	11	94
IEPA HHW COLLECTION	1021 NORTH GRAND AVE E	11	96
LEES DELUXE CLEANERS	1221 N 8TH ST	11	174
IEPA PRINT SHOP	1340 N 9TH ST	11	178
IEPA BUILDING,	1340 N 9TH ST	11	180
JEWEL FOOD STORES	909 E CONVERSE	11	180
LUCKY LADY LAUNDRY CENTER	120 N GRAND AVE	13	186
SUNOCO SERVICE STATION	200 N GRAND AVE EAST	13	189
LINCOLNLAND OIL CO	430 NORTH GRAND AVE E	13	195
928 N 1ST ST	928 N 1ST ST	14	195
SOUTHERN IL SCHOOL OF MEDICINE	801 N. RUTLEDGE	16	199
IEPA ORGANIC LAB	825 N RUTLEDGE	16	202
SPRINGFIELD MASS TRANSIT	928 S 9TH ST	18	207
SPRINGFIELD, CITY OF-POLICE	837 S 4TH	18	210
FRANKLIN LIFE	800 S 6TH	18	211
CATHEDRAL OF IMMACULATE CONCEP	820 S 5TH ST	18	212
ENVIRONMENTAL SAFETY CONSULTAN	824 S 2ND ST	18	212
FRANKLIN LIFE	808 S EIGHTH ST	18	213
SPRINGFIELD, CITY OF	5TH & LAWRENCE	18	216
JACK STOLDTS GARAGE	717 S 5TH	18	217
STOLDTS JACK SVC	717 S FIFTH	18	218
FIRST OF AMERICA TRUST	737 E COOK ST	18	220
IL BELL	555 E COOK ST	18	223
HICKOX APARTMENTS	631 S 4TH ST	18	225
AT&T	620 S 5TH ST	18	228
VACHEL LINDSAY HOME	603 S 5TH ST	18	233
VACHEL LINDSEY HOME	603 S FIFTH ST	18	233
LUCENT TECHNOLOGIES INC	601 S SIXTH ST	18	236
ILLINOIS SECRETARY OF STATE	SECOND AND EDWARDS ST	18	237
MARATHON OIL CO UNIT 1794	200 W EDWARDS AND SPRIN	18	241
ILLINOIS EDUCATION ASSOCIATION	100 E EDWARDS	18	243
MARATHON OIL CO 1794	200 W EDWARDS	18	245
SHUTT HOUSE	525 S EIGHTH ST	18	245
IDNR	524 SOUTH SECOND STREET	18	252
WASHINGTON MIDDLE SCHOOL - DIS	230 E JACKSON ST	18	255
IL CMS REPRODUCTION SVCS	425 S 4TH	18	258
ILLINOIS STATE BAR ASSOCIATION	424 S 2ND ST	18	258

EXECUTIVE SUMMARY

<u>Site</u>	<u>Address</u>	<u>Map ID</u>	<u>Page</u>
LINCOLNS HOME	413 8TH ST	18	260
IL SUPREME COURT	400 S 2ND ST	18	266
MOTOR INN GARAGE	307-309 S 4TH ST	18	269
FINDLEY PAUL FEDERAL BUILDING	600 EAST MONROE	18	271
SPRINGFIELD HILTON	700 E ADAMS ST	18	276
MARINE BANK TRUST DEPT	307 TO 309 S FOURTH	18	277
219 W 4TH	219 S 4TH	18	280
STE CONTROLLER PRINT SHOP	325 W ADAMS	18	281
RENAISSANCE SPRINGFIELD HOTEL	701 E ADAMS	18	285
OSCO DRUG STORE	508 E ADAMS	18	288
SCHNEPP & BARNES	412 E ADAMS	18	288
BOWLING ALLEY	125 E ADAMS	18	291
IL SECRETARY OF STATE	110 E ADAMS	18	293
CHICAGO MISSOURI RAILWAY	3 W OLD CAPITOL PLAZA	18	293
GIETL BROTHERS INC	109 S SECOND ST	18	295
BUCK BLDG	527 E WASHINGTON	18	297
MYERS FAMILY REAL ESTATE LLC	1 W OLD STATE CAPITOL P	18	299
FIRST OF AMERICA BANK	1 OLD STATE CAPITOL PLZ	18	299
AMEREN CILCO	100 W WASHINGTON ST	18	303
IL CMS	101 W WASHINGTON	18	303
AMEREN MFG GAS PLANT	116 W WASHINGTON	18	304
ALZINA BUILDING	100 N FIRST	18	304
IL DEPT OF CENTRAL MGMT	101 W WASHINGTON	18	307
IL HISTORIC PRESERVATION AGENC	617 E JEFFERSON	18	309
TRAFFIC ENG SIGN SHOP	601 E JEFFERSON ST	18	313
UPTOWN INC	319 E JEFFERSON	18	317
ISPRINGHAUSEN IMPORTS	229 E JEFFERSON	18	318
ISRINGHAUSEN IMPORTS	229 E JEFFERSON ST	18	321
ECHO LAKE FARM PRODUCE CO INC	2ND & JEFFERSON ST	18	321
SALLY WARD LAUNDRY CLEANERS IN	116 E JEFFERSON ST	18	323
FRANK MASON REAL ESTATE	137 E JEFFERSON	18	331
219 S 4TH	219 N 4TH	18	331
CENTRUM NORTH RADIOTHERAPY PAR	319 E MADISON STE 3G	18	333
STATE OF IL EMERGENCY MGT	301 W MADISON	18	338
IMPERIAL PLATING CO	313 W MADISON ST	18	340
MARCHAS BUILDING CORP	318 N 4TH ST	18	344
IL SECRETARY OF STATE COMM	319 N KLEIN	18	347
JOES GARAGE	324 N 1ST ST	18	349
CENTRUM NORTH RADIO THERAPY &	401 N 4TH ST	18	351
R W BRADLEY	409 N 4TH	18	353
ISRINGHAUSEN IMPORTS INC	401 N 2ND ST	18	354
HILLIER STORAGE MOVING CO	417 N 4TH ST	18	354
IL SECRETARY OF STATE POWER PL	KLEIN AND MASON	18	356
ILLINOIS ASPHALT PAVEMENT ASSN	424 N 4TH ST STE 100	18	359
FORD PRINTING	418 N 2ND	18	359
HUBBARD MILLING CO	426 N SECOND ST	18	364
SPRINGFIELD TIRE & ALIGNMENT	214 W REYNOLDS REAR	18	367
PARK FUNERAL HOMES INC D/B/A S	437 N SIXTH ST	18	369
PARK FUNERAL HOME INC	530 N 5TH ST	18	370
KUMLER UNITED METHODIST CHURCH	600 N 5TH ST	18	370
DISCOUNT AUTOMOTIVE	612 N 3RD ST	18	371
MEMORIAL MEDICAL CENTER	701 N 1ST ST	18	373
SPRINGFIELD DECATUR TRANSFER C	223 E UNION ST	18	374
LICATAS CLEANERS	822 E MILLER	19	382
PIERCE WASTE OIL	1925 E MADISON ST	22	385
F & F CONSULTANTS	1122 S. SPRING ST	25	412

EXECUTIVE SUMMARY

<u>Site</u>	<u>Address</u>	<u>Map ID</u>	<u>Page</u>
ASIAN FOOD STORE	947 SPRING ST	25	414
STAAB BATTERY MFG CO INC	931 S ELEVENTH	26	415
BRAHLER AUTO SVC	531 E LAUREL	27	419
AMOCO, LESS	1700 S 5TH	27	423
PRINTING CENTER THE	1602 S FIFTH ST	27	427
SHERWIN WILLIAMS CO THE	1730 S 6TH ST	27	429
PRINTING CENTER	1620 S 5TH ST	27	432
MALE EGO STUDIO	1529 S 5TH	27	435
AMERICAN AMBULANCE SERVICE INC	1501 S 5TH ST	27	435
IL DEPT OF PUBLIC AID	100 SOUTH GRAND AVE E	27	443
CONCORD CUSTOM CLEANERS 6041	128 SOUTH GRAND AVE E	27	443
MOBIL OIL CORP 12LX8	425 SOUTH GRAND AVE E	27	448
UNION 76	5TH & SOUTH GRAND AVE E	27	451
SUNOCO SERVICE STATION	601 S GRAND	27	451
WESTERN AUTO	616 S GRAND E	27	454
ONE HOUR MARTINIZING	1400 S EIGHTH ST	27	456
DAVIS CLEANERS	1205 S SECOND ST	27	461
BISCH & SON MEMORIAL HOME	505 E ALLEN	27	466
ACE OIL SERVICES LTD	1118 S SIXTH ST	27	484
SOLOMON #2	1600 N WALNUT ST	29	488
STEWART-WARNER HOBBS CORPORATI	YALE BOULEVARD & ASH ST	30	490
PRODUCTION CONTROLS	1700 S SPRING SUITE 2A	31	510
LAWRENCE EDUCATION CENTER	101 E LAUREL	31	512
CITY WATER LIGHT & POWER	1ST & CORNELL	32	512
ROBERTS AUTOMOTIVE	100 W ASH	32	513
IDOT 2ND FLOOR	126 E ASH ST	32	515
ILDOT BUR MTLs PHY RES	126 E ASH ST	32	516
STATE OF IL - ASH STREET GARAG	200 EAST ASH ST.	32	522
IL CENTRAL MGMT SERV DEPT OF V	200 E ASH ST	32	523
IEPA	2053 S 5TH ST	33	526
IL STATE POLICE	2168 S NINTH ST	34	528
SEARS P/S 9660	2548 S FIRST ST	36	533
EARLY LEARNING CENTER	2501 S 1ST ST	36	535
FCA HOLDINGS INC	2720 HOLMES AVE	37	535
KIMS AUTOBODY AND PAINT	2714 S HOLMES AVE	37	538
NIEMCZYK PAINTING & PAPER CO	312 B NORTH ST	38	540
KIMS AUTOBODY & PAINT	310 NORTH ST	38	543
FINKS CUSTOM DRAPERIES	2756 S 6TH	39	546
FURROW BLDG MATERIALS	2744 S 6TH	39	549
AYERCO SELF SVC	430 STANFORD	39	556
ILLINOIS AYERS OIL CO	430 STANFORD AVE	39	561
LUBE MASTER	415 E STANFORD	39	562
WOODSIDE TOWNSHIP	490 NORTH ST	40	564
MATHEWS BILL AUTO BODY INC	750 W NORTH	41	566
LINCOLN LAND COMMUNITY COLLEGE	815 S AIRPORT DR-A	41	568
FIAT-ALLIS CONSTRUCTION MACHIN	3000 S 6TH ST	43	577

EXECUTIVE SUMMARY

STATE AND LOCAL RECORDS

SHWS: The State Hazardous Waste Sites records are the states' equivalent to CERCLIS. These sites may or may not already be listed on the federal CERCLIS list. Priority sites planned for cleanup using state funds (state equivalent of Superfund) are identified along with sites where cleanup will be paid for by potentially responsible parties. The data come from the Illinois Environmental Protection Agency's Category List.

A review of the SHWS list, as provided by EDR, and dated 11/16/2009 has revealed that there are 4 SHWS sites within the searched area.

<u>Site</u>	<u>Address</u>	<u>Map ID</u>	<u>Page</u>
KYANIZE PAINT	1616 NORTH 14TH STREET	5	38
MURRAY SALVAGE		18	206
MERVIS		18	207
MORECO ENERGY	1925 E MADISON ST	20	384

CAT: Illinois Category List.

A review of the CAT list, as provided by EDR, and dated 06/01/1997 has revealed that there are 5 CAT sites within the searched area.

<u>Site</u>	<u>Address</u>	<u>Map ID</u>	<u>Page</u>
KYANIZE PAINTS INCORPORATED	1616 NORTH FOURTEENTH S	5	31
Facility Type: SITE REMEDIATION PROGRAM			
MURRAY SALVAGE		18	206
Facility Type: NOTICE RESPONSE ACTION SITE			
MERVIES IRON & SUPPLY		18	207
Facility Type: SITE REMEDIATION PROGRAM			
MERVIS		18	207
Facility Type: NOTICE RESPONSE ACTION SITE			
FIAT-ALLIS CONSTRUCTION MACHIN	3000 S 6TH ST	43	577
Facility Type: SITE REMEDIATION PROGRAM			

SWF/LF: The Solid Waste Facilities/Landfill Sites records typically contain an inventory of solid waste disposal facilities or landfills in a particular state. The data come from the Illinois Environmental Protection Agency's Available Disposal for Solid Waste in Illinois--Solid Waste Landfills Subject to State Surcharge list.

A review of the SWF/LF list, as provided by EDR, and dated 12/01/2007 has revealed that there are 5 SWF/LF sites within the searched area.

<u>Site</u>	<u>Address</u>	<u>Map ID</u>	<u>Page</u>
LARGE, DEAN	517 RIDGELY	7	70
SPRINGFIELD HOUSING AUTHORITY	200 NORTH 11TH ST	24	411
CIUFFETELLI, RAY	541 WEST VINE	28	487
SOLOMON #2	1600 N WALNUT ST	29	488
OBERMAN, SAM B	2401 YALE BOULEVARD	35	531

EXECUTIVE SUMMARY

UIC: Injection wells are used for disposal of fluids by "injection" into the subsurface. The construction of injection wells range from very technical designs with twenty-four hour monitoring to simply a hole dug in the ground to control runoff. As a result of this diversity, the UIC Program divides injection wells into five different classes.

A review of the UIC list, as provided by EDR, and dated 12/10/2009 has revealed that there is 1 UIC site within the searched area.

<u>Site</u>	<u>Address</u>	<u>Map ID</u>	<u>Page</u>
AYERCO #14	430 STANFORD AVE.	39	560

LF SPECIAL WASTE: These landfills, as of January 1, 1990, accept non-hazardous special waste pursuant to the Illinois EPA Non-Hazardous Special Waste Definition. List A includes landfills that may receive any non-hazardous waste, Non-Regional Pollution Control Facilities are so noted. List B includes landfills designed to receive specific non-hazardous wastes. List B landfills are designated as a Regional Pollution Control Facility by RPCF, or Non-Regional Pollution Control Facility by Non-RPCF.

A review of the LF SPECIAL WASTE list, as provided by EDR, and dated 01/01/1990 has revealed that there is 1 LF SPECIAL WASTE site within the searched area.

<u>Site</u>	<u>Address</u>	<u>Map ID</u>	<u>Page</u>
CIPS #2	607 EAST ADAMS STREET	18	288

LUST: The Leaking Underground Storage Tank Incident Reports contain an inventory of reported leaking underground storage tank incidents. The data come from the Illinois Environmental Protection Agency's LUST Incident Report.

A review of the LUST list, as provided by EDR, and dated 12/11/2009 has revealed that there are 97 LUST sites within the searched area.

<u>Site</u>	<u>Address</u>	<u>Map ID</u>	<u>Page</u>
ILLINOIS DEPT. OF AGRICULTURE NFA/NFR Letter: 1/7/1994	ILLINOIS BLDG. STATE FA	1	3
SOUTHERN PACIFIC TRANSPORTATIO NFA/NFR Letter: 8/7/2002	1700-1800 BLOCK OF WARR	2	3
BURWELL OIL SERVICE NFA/NFR Letter: 3/15/1991	1400 SANGAMON AVE.	3	7
SOUTHERN PACIFIC TRANSPORTATIO NFA/NFR Letter: 7/16/2001	1701 SANGAMON AVE.	3	14
TRUMAN L. FLATT TRUCKING NFA/NFR Letter: 3/3/1998	2300 NORTH 16TH	3	17
ILLINOIS DEPT. OF AGRICULTURE NFA/NFR Letter: 6/8/1999	801 SANGAMON AVE.	4	21
ILLINOIS DEPT. OF AGRICULTURE NFA/NFR Letter: 6/10/1999	801 EAST SANGAMON AVE.	4	22
PROFESSIONAL DEVELOPMENT CO NFA/NFR Letter: 1/20/1994	1545 N 11TH ST	5	24
BYRNE, THOMAS A. NFA/NFR Letter: 8/24/1992	1650 NORTH 14TH	5	40

EXECUTIVE SUMMARY

<u>Site</u>	<u>Address</u>	<u>Map ID</u>	<u>Page</u>
PRESTON TRUCKING CO INC NFA/NFR Letter: 7/3/1997	1309 RIDGELY AVE	5	47
PRESTON CO.	1309 RIDGELY AVE.	5	48
FJ MURPHY & SON INC. NFA/NFR Letter: 8/24/1994	1800 FACTORY AVE.	5	49
Q & E PROPERTIES, INC. NFA/NFR Letter: 11/24/2009	1200 GRIFFITHS AVENUE	5	55
CHRONISTER OIL COMPANY	2026 REPUBLIC	5	56
OAK RIDGE CEMETARY NFA/NFR Letter: 1/14/2000	1441 MONUMENT AVENUE	10	77
HARPER OIL CO. NFA/NFR Letter: 7/24/2006 NFA/NFR Letter: 7/24/2006	1028 NORTH 9TH ST.	11	79
ILLICO INDEPENDENT OIL CO.	1102 NORTH 9TH	11	84
HOOKS SUPER X	1160 NORTH 9TH STREET	11	86
TUXHORN GARAGE NFA/NFR Letter: 6/5/1995	1158 NORTH 6TH	11	86
BRÄHLER TIRE MART	7TH / NORTH GRAND	11	89
ED'S AMOCO #5042 NFA/NFR Letter: 5/17/2004	1201 NORTH 9TH	11	93
SMITH OIL CO. NFA/NFR Letter: 3/20/2002	1201 NORTH 9TH ST.	11	94
CHICAGO ILLINOIS MIDLAND RAILR NFA/NFR Letter: 10/16/1990	15TH / NORTH GRAND	12	183
FORMER CLARK STATION	312 NORTH GRAND	13	183
CHRONISTER OIL COMPANY	312 NORTH GRAND AVENUE	13	192
GOODWILL INDUSTRIES	800 NORTH 10TH STREET	17	205
ILLICO INDEPENDENT OIL CO.	1129 SOUTH 9TH ST.	18	206
SPRINGFIELD MASS TRANSIT NFA/NFR Letter: 8/3/2004	928 S 9TH ST	18	207
1ST OF AMERICA BANK TRUST #130	737 EAST COOK	18	221
AT&T NFA/NFR Letter: 4/3/1995	620 S 5TH ST	18	228
SUPER MART, INC.	601 SOUTH 9TH STREET	18	232
MARATHON OIL CO. NFA/NFR Letter: 11/19/2002	200 WEST EDWARDS / SP	18	243
MASON, FRANK NFA/NFR Letter: 3/30/2004	520 SOUTH NINTH ST.	18	251
BANK 1 TRUST 81-0372-8	525-535 SOUTH 6TH ST.	18	254
FRANK MASON REAL ESTATE NFA/NFR Letter: 4/3/2000	431 SOUTH 4TH ST.	18	257
AMOCO OIL #8583 NFA/NFR Letter: 6/28/2002	420 SOUTH 9TH STREET	18	257
SPRINGFIELD, CITY OF NFA/NFR Letter: 7/27/2000	MUNICIPAL CENTER WEST,	18	258
SECRETARY OF STATE	2ND / CAPITAL	18	261
BRIDGESTONE FIRESTONE	407 SOUTH 6TH ST.	18	262
SANGAMON COUNTY SHERIFF NFA/NFR Letter: 10/10/1995	9TH / CAPITOL	18	265

EXECUTIVE SUMMARY

<u>Site</u>	<u>Address</u>	<u>Map ID</u>	<u>Page</u>
MOTOR INN GARAGE NFA/NFR Letter: 8/5/1991	307-309 SOUTH 4TH	18	269
GENERAL SERVICES ADMIN. NFA/NFR Letter: 4/8/1997	600 EAST MONROE	18	274
SUBURBAN MGT. OF IL NFA/NFR Letter: 9/8/1999	325 WEST ADAMS	18	283
BUNN CAPITOL CO. NFA/NFR Letter: 3/30/1994	917 EAST ADAMS ST.	18	284
SECRETARY OF STATE NFA/NFR Letter: 3/9/1994	110 EAST ADAMS	18	291
GIETL BROTHERS INC. NFA/NFR Letter: 12/12/2005	101 SOUTH 2ND	18	301
ALZINA BUILDING NFA/NFR Letter: 9/19/2000	100 N FIRST	18	304
STATE OF IL CAPITAL DEVELOPMEN NFA/NFR Letter: 4/16/2002	617 EAST JEFFERSON ST.	18	312
UPTOWN INC. NFA/NFR Letter: 1/27/1995	NORTHWEST CORNER 4TH /	18	316
SALLY WARD CLEANERS NFA/NFR Letter: 5/31/2006	116 EAST JEFFERSON STRE	18	325
FRANK MASON REAL ESTATE NFA/NFR Letter: 12/26/2000	137 EAST JEFFERSON	18	330
STATE OF IL CAPITAL DEVELOPMEN MARCHAS BLDG. CORP.	300 NORTH 5TH STREET 4TH / MADISON	18 18	335 337
1ST NATIONAL BANK NFA/NFR Letter: 8/20/1993	317 NORTH 5TH ST.	18	343
STATE POWER PLANT NFA/NFR Letter: 9/8/1999	315 NORTH KLEIN	18	347
JOE'S GARAGE NFA/NFR Letter: 11/29/1990	324 NORTH 1ST ST.	18	349
CENTRUM NORTH RADIO THERAPY NFA/NFR Letter: 11/26/1991	401 NORTH 4TH ST.	18	350
ACE SIGN CO. NFA/NFR Letter: 6/26/1995	402 NORTH 4TH	18	351
HUBBARD MILLING CO. NFA/NFR Letter: 6/7/1996	426 NORTH 2ND ST.	18	363
MEMORIAL MEDICAL CENTER NFA/NFR Letter: 1/16/2008 NFA/NFR Letter: 1/16/2008	701 NORTH 1ST STREET	18	371
CITY WATER LIGHT & POWER NFA/NFR Letter: 12/19/1990	10TH / REYNOLDS	19	376
ST. JOHN'S HOSPITAL NFA/NFR Letter: 6/6/2005	930 EAST REYNOLDS	19	377
DUFFY, LEE SCHOOL DIST. #186	447 NORTH WALNUT 530 WEST REYNOLDS	21 21	384 384
NFA/NFR Letter: 1/19/1993			
FARMERS MARKET NFA/NFR Letter: 5/21/1990	WALNUT / JEFFERSON	23	409

EXECUTIVE SUMMARY

<u>Site</u>	<u>Address</u>	<u>Map ID</u>	<u>Page</u>
STAAB BATTERY MFG CO INC NFA/NFR Letter: 11/4/1998	931 S ELEVENTH	26	415
DRIVE IN CAR WASH NFA/NFR Letter: 1/26/2001	1814 SOUTH 6TH ST.	27	417
BLANKENSHIP, LESTER AMOCO, LESS	1700 SOUTH 5TH ST. 1700 S 5TH	27 27	423 423
AMERICA AMBULANCE SERVICE INC. NFA/NFR Letter: 3/10/1998	1501 SOUTH 5TH ST.	27	435
ANDERSON, PAULINA MOBIL OIL #12LX8 NFA/NFR Letter: 5/9/2005	1529 SOUTH 9TH ST. 425 SOUTH GRAND AVE.	27 27	436 450
S.S.S. DEVELOPMENT, INC. KOVSKI, JOHN M.D.	426 SOUTH GRAND AVE. EA 401 SOUTH GRAND AVE. EA	27 27	450 451
1ST NATIONAL BANK NFA/NFR Letter: 10/8/1996	9TH / SOUTH GRAND	27	459
BIG FOOT FOOD STORES NFA/NFR Letter: 2/4/2005 NFA/NFR Letter: 2/4/2005	926 SOUTH GRAND AVE.	27	460
JOHNSON OIL CO. NFA/NFR Letter: 2/4/2005	926 SOUTH GRAND AVE.	27	461
CHARLES T. BISCH & SON INC. NFA/NFR Letter: 2/13/1992	505 EAST ALLEN ST.	27	465
HENRY NELCH & SON CO. NFA/NFR Letter: 3/26/1992	1947 SOUTH 10 1/2 ST.	30	506
CAPITAL PLUMBING & HEATING NFA/NFR Letter: 5/5/1998	1900 SOUTH 8TH ST.	30	507
CLARK RETAIL ENTERPRISES, INC. MINI EXPRESS	900 EAST LAUREL 900 EAST LAUREL	30 30	508 508
SKS VENTURES LLC	900 EAST LAUREL STREET	30	509
WARECO SERVICE INC.	900 EAST LAUREL ST.	30	509
HURRICANE FENCE CO. NFA/NFR Letter: 4/5/1991	1000 EAST LAUREL	30	510
HOLLAND SPECIALITY RATLIFF SHELL STATION NFA/NFR Letter: 6/17/1993 NFA/NFR Letter: 1/8/1991	201 WEST LAUREL 100 WEST ASH	31 32	511 514
ILLINOIS DEPT. OF TRANSPORTATI ILLINOIS CMS/DOV NFA/NFR Letter: 10/28/1998	126 EAST ASH ST. 200 EAST ASH ST.	32 32	520 523
DOCTORS HOSPITAL NFA/NFR Letter: 10/3/1995	5230 SOUTH 6TH ST.	39	553
WAKE, DELBERT NFA/NFR Letter: 3/19/1992	2700 SOUTH 6TH ST.	39	554
ILLINOIS AYERS OIL CO. LUBE MASTER NFA/NFR Letter: 3/30/1992	430 STANFORD AVE. 415 E STANFORD	39 39	555 562
AYERS OIL CO. FIAT-ALLIS CONSTRUCTION MACHIN NFA/NFR Letter: 5/1/1991 NFA/NFR Letter: 5/1/1991	2966 SOUTH MACARTHUR 3000 S 6TH ST	42 43	577 577

EXECUTIVE SUMMARY

<u>Site</u>	<u>Address</u>	<u>Map ID</u>	<u>Page</u>
ESTATE OF VEDA L. SMITH	3449 SOUTH MACARTHUR BL	45	598
FIAT-ALLIS NORTH AMERICA INC. NFA/NFR Letter: 5/28/1992	701 STEVENSON DR.	46	599

LUST TRUST: In case sufficient funds are not available in the Underground Storage Tank Fund, requests for payment are entered on the Payment Priority List by "queue date" order. As required by the Environmental Protection Act, the queue date is the date that a complete request for partial or final payment was received by the Agency. The queue date is "officially" confirmed at the end of the payment review process when a Final Decision Letter is sent to the site owner.

A review of the LUST TRUST list, as provided by EDR, and dated 11/03/2009 has revealed that there are 4 LUST TRUST sites within the searched area.

<u>Site</u>	<u>Address</u>	<u>Map ID</u>	<u>Page</u>
FORMER CLARK STATION	312 NORTH GRAND	13	183
SUPER MART, INC.	601 SOUTH 9TH STREET	18	232
MEMORIAL MEDICAL CENTER	701 NORTH 1ST STREET	18	371
ILLINOIS AYERS OIL CO.	430 STANFORD AVE.	39	555

UST: The Underground Storage Tank database contains registered USTs. USTs are regulated under Subtitle I of the Resource Conservation and Recovery Act (RCRA). The data come from the Illinois State Fire Marshal's STC Facility List.

A review of the UST list, as provided by EDR, and dated 11/03/2009 has revealed that there are 109 UST sites within the searched area.

<u>Site</u>	<u>Address</u>	<u>Map ID</u>	<u>Page</u>
SPRINGFIELD YARD	1701 S SANGAMON AVE & W	3	4
G B OIL	1400 SANGAMON AVE	3	7
SPRINGFIELD YARD	1701 E SANGAMON	3	15
THORNTONS #370	2208 PEORIA ROAD	3	15
TRUMAN L FLATT & SONS COINC	2300 N 16	3	20
SIU SCHOOL OF MEDICINE WAREHOU	1545 N 11TH ST	5	23
A B C SUPPLY CO	1650 N 14TH	5	40
PRESTON TRUCKING CO INC	1309 RIDGELY AVE	5	47
JF COADY CO INC	1301 PLUTO AVE	5	49
F J MURPHY & SON INC	1800 FACTORY AVE REAR	5	50
EXPRESS FOOD MART #3	1900 PEORIA ROAD	5	51
OLD STATION	1921 PEORIA RD	5	53
Q & E PROPERTIES, INC.	1200 GRIFFITHS AVE.	5	54
LINCOLN LAND OIL COMPANY	2026 REPUBLIC PO BOX 43	5	58
DUNCAN OIL CO	1900 GRIFFITH ST	6	67
LINCOLN PARK MAINTENANCE	1601 N 5TH ST	7	70
HARPER OIL CO #18	1028 N. 9TH STREET	11	80
ILLICO, INC.	1102 NORTH 9TH STREET	11	83
REVEREND HILDEBRANDT APTS	1151 N 8TH ST	11	85
TUXHORN GARAGE	1158 N 6TH ST	11	87
WOLFF CURT	700 N GRAND E	11	88
SUNSHINE FOODS #759	1201 N. 9TH ST.	11	90
LEE S DELUXE CLEANERS	1221 N 8TH ST	11	174
ROXIE SUNOCO	200 E N GRAND	13	184

EXECUTIVE SUMMARY

<u>Site</u>	<u>Address</u>	<u>Map ID</u>	<u>Page</u>
FORMER CLARK STATION	312 NORTH GRAND AVENUE	13	190
QIK-N-EZ	430 N GRAND AVE E	13	192
SOUTHERN ILLINOIS UNIVERSITY	801 N. RUTLEDGE STREET	16	202
FRANKLIN LIFE INS CO	800 S 7TH ST	18	214
CATHEDRAL OF THE IMMACULATE CO	524 EAST LAWRENCE AVE.	18	216
TOWNHOUSE CONDOMINIUMS	718 S 7TH ST	18	217
JACK STOLDT AUTO SERVICE INC	717 S 5TH	18	217
FIRST OF AMERICAN TRUST 130595	737 E COOK	18	222
AT&T SPRINGFIELD - 044350 (IL4	620 S. 5TH STREET	18	231
SPRINGFIELD MAIN ESS	601 SOUTH 6TH STREET	18	239
MARATHON UNIT #1794	200 W EDWARDS SPRING ST	18	240
BANK ONE SPFLD	525-535 S 6TH ST	18	252
SECRETARY OF STATE	431 SOUTH 4TH STREET	18	256
IL SECRETARY OF STATE	2ND & CAPITOL NE CORNER	18	262
FIRESTONE MASTER CARE CENTER	407 S 6 ST	18	263
NEW PARKING RAMP	SOUTH SPRING ST ACROSS	18	265
LINCOLN LIBRARY	7TH & CAPITAL	18	267
OLD SANGAMON CO BLDG SITE	800 E MONROE	18	268
MUNICIPAL CENTER WEST SPFLD. C	300 SOUTH 7TH STREET	18	269
MOTOR INN PARKING GARAGE	307-309 S 4TH ST	18	270
PAUL FINDLEY FED BLDG	600 E MONROE	18	273
STRATTON OFFICE BLDG	MONROE & COLLEGE ST UND	18	274
ILLINOIS BUSINESS CENTER	400 WEST MONROE	18	275
OXTOBY PROPERTIES	220-230 S 6TH ST	18	279
CENTRAL MANAGEMENT SERVICES	201 WEST ADAMS STREET	18	280
CMS COMPUTER FAC	201 W ADAMS ST	18	281
STATE COMPTROLLERS	325 W ADAMS	18	283
IEMA	110 EAST ADAMS STREET	18	292
FORMERLY MCCUTCHEONS MOBIL	101 S 2ND ST	18	300
SPRINGFIELD POINT OF PRESENCE	232 E WASHINGTON STREET	18	302
AMEREN / FORMER SPFLD MOTOR PO	101 W. WASHINGTON	18	306
FIRST OF AMERICAN BANK SPRINGF	ONE NORTH OLD STATE CAP	18	308
SPRINGFIELD IL POLICE DEPT	617 E JEFFERSON ST	18	311
UPTOWN INC	319 E JEFFERSON	18	317
IEO WAREHOUSE	127 E JEFFERSON	18	321
SALLY WARD CLEANERS	116 E. JEFFERSON	18	322
TISCKOS FURNITURE (FORMER)	4TH & MADISON	18	331
WILLARD ICE BUILDING - SECRETA	MADISON & FIRST - NORTH	18	334
VACANT PARKING LOT	5TH ST & EAST MADISON	18	335
ABRAHAM LINCOLN PARKING GARAGE	300 N. 5TH STREET	18	336
CMS - DEPARTMENT OF BENEFITS	201 E. MADISON	18	338
FIRST NAT BK OF SPRINGFIELD	317 N 5TH ST RELLERT TR	18	344
CAPITOL COMPLEX POWER PLANT	315 N KLEIN	18	346
PRAIRIE HEART INSTITUTE	619 EAST MASON	18	350
VACANT LOT CENTRUM OWNERSHIP	401 N 4TH	18	351
ACE SIGN CO	402 N 4TH ST	18	352
ST JOHN'S PAVILLION	701 E MASON	18	353
ALL GOOD AUTO SERVICE	322 W MASON ST	18	359
ELLINGER KUNZ & DAVIS INC	437 N 6TH ST	18	363
HUBBARD MILLING CO	426 N 2ND ST	18	364
MEMORIAL MEDICAL CENTER	701 NORTH 1ST STREET	18	371
RUDOLF EXPRESS CO	223 E UNION ST	18	376
ST. JOHN'S HOSPITAL	800 E. CARPENTER	19	380
SANKEY ELDERLY HI - RISE TOWER	401 WEST ALLEN ST	25	413
ANTIQUE FURNITURE SALES	940 SOUTH PASFIELD	25	413
JOES RADIATOR SHOP	900 S PASFIELD	25	414

EXECUTIVE SUMMARY

<u>Site</u>	<u>Address</u>	<u>Map ID</u>	<u>Page</u>
GC DRIVE IN CAR WASH INC	1814 S 6TH ST	27	418
BRAHLER TIRE MART INC	531 E LAUREL	27	419
LES' AMOCO, INC.	1700 S. 5TH STREET	27	420
BRAHLER LUBE CENTER	1701 S 6TH	27	432
AMERICA AMBULANCE SER INC	1501 S 5TH ST	27	436
LINCOLN MOTO MART	610 S. GRAND AVENUE EAS	27	439
PHILLIPS 66 CO #018883	128 S GRAND W	27	442
INTERSTATE TRANSMISSIONS	230 S GRAND AVE E	27	445
KOVSKI & KOVSKI	401 S GRAND AVE E	27	445
JIFFI STOP C STORES	436 SOUTH GRAND AVENUE	27	446
MOBIL STATION #12LX8	425 S GRAND AVE	27	448
ORPHAN TANK	610 E VINE	27	464
CHARLES T BISCH & SONS INC	505 E ALLEN	27	464
CAPITOL GROUP	1900 S 8TH ST	30	506
INSURANCE CAR RENTALS	201 W LAUREL	31	510
LAWRENCE ADULT CTR	101 E LAUREL	31	512
RATLIFF SER	100 W ASH	32	513
IL DEPT OF TRANSPORTATION	126 E ASH ST	32	519
STATE OF ILLINOIS, CMS VEHICLE	200 E. ASH STREET	32	520
POOL CENTER, INC.	2160 S. 6TH STREET	33	526
DR. ROBERT RUSSELL	2160 S. 9TH STREET	34	531
SEARS #9660	2548 S 1ST ST	36	534
R&M AUTO SUPPLY	2717 S 6TH ST	39	551
LINCOLN PRAIRIE BEHAVIORAL HEA	5230 S. 6TH STREET	39	552
WAKE DELBERT G	2700 S 6TH ST	39	554
AYERCO CONVENIENCE CENTER #14	430 STANFORD AVENUE	39	557
LUBE MASTER	415 E STANFORD	39	561
FURROWS BLDG MATERIALS	2644 S 6	39	564
CARL CARTER AGENCY INC	2917 S 6TH	43	595

SPILLS: A listing of incidents reported to the Office of Emergency Response.

A review of the SPILLS list, as provided by EDR, and dated 10/19/2009 has revealed that there are 3 SPILLS sites within the searched area.

<u>Site</u>	<u>Address</u>	<u>Map ID</u>	<u>Page</u>
SALLY WARD LAUNDERERS & CLEANER	116 E JEFFERSON ST	18	326
Not reported	300 N 5TH ST	18	337
Not reported	701 N 1ST ST	18	374

ENG CONTROLS: Sites with Engineering Controls.

A review of the ENG CONTROLS list, as provided by EDR, and dated 10/27/2009 has revealed that there are 5 ENG CONTROLS sites within the searched area.

<u>Site</u>	<u>Address</u>	<u>Map ID</u>	<u>Page</u>
KYANIZE PAINTS, INC.	1616 NORTH 14TH STREET	5	36
YOUNG'S SECURITY	400 NORTH 1ST STREET	18	354
CVS PHARMACY	611 SOUTH GRAND AVENUE	27	453
HONEYWELL HOBBS CORPORATION	1034 EAST ASH STREET	30	495

EXECUTIVE SUMMARY

<u>Site</u>	<u>Address</u>	<u>Map ID</u>	<u>Page</u>
<i>KERASOTES CORPORATION OFFICES</i>	<i>755 APPLE ORCHARD ROAD</i>	<i>43</i>	<i>593</i>

INST CONTROL: Legal or administrative restrictions on land use and/or other activities (e.g., groundwater use restrictions) which effectively limit exposure to contamination may be employed as alternatives to removal or treatment of contamination.

A review of the INST CONTROL list, as provided by EDR, and dated 10/27/2009 has revealed that there are 11 INST CONTROL sites within the searched area.

<u>Site</u>	<u>Address</u>	<u>Map ID</u>	<u>Page</u>
<i>KYANIZE PAINTS, INC.</i>	<i>1616 NORTH 14TH STREET</i>	<i>5</i>	<i>36</i>
<i>LEES DELUXE CLEANERS</i>	<i>1221 N 8TH ST</i>	<i>11</i>	<i>174</i>
<i>SALLY WARD CLEANERS</i>	<i>116 EAST JEFFERSON STRE</i>	<i>18</i>	<i>325</i>
<i>YOUNG'S SECURITY</i>	<i>400 NORTH 1ST STREET</i>	<i>18</i>	<i>354</i>
<i>SPRINGFIELD CREDIT UNION</i>	<i>825 EAST CARPENTER STRE</i>	<i>19</i>	<i>379</i>
<i>FARMER'S MARKET</i>	<i>700 WEST JEFFERSON STRE</i>	<i>23</i>	<i>410</i>
<i>CONCORD CUSTOM CLEANERS #041</i>	<i>128 SOUTH GRAND AVENUE</i>	<i>27</i>	<i>444</i>
<i>CVS PHARMACY</i>	<i>611 SOUTH GRAND AVENUE</i>	<i>27</i>	<i>453</i>
<i>HONEYWELL HOBBS CORPORATION</i>	<i>1034 EAST ASH STREET</i>	<i>30</i>	<i>495</i>
<i>FIAT-ALLIS CONSTRUCTION MACHIN</i>	<i>3000 S 6TH ST</i>	<i>43</i>	<i>577</i>
<i>KERASOTES CORPORATION OFFICES</i>	<i>755 APPLE ORCHARD ROAD</i>	<i>43</i>	<i>593</i>

SRP: Illinois Environmental Protection Agency, Site Remediation Program Database

A review of the SRP list, as provided by EDR, and dated 10/27/2009 has revealed that there are 17 SRP sites within the searched area.

<u>Site</u>	<u>Address</u>	<u>Map ID</u>	<u>Page</u>
<i>PROFESSIONAL DEVELOPMENT CORP.</i>	<i>1545 NORTH 11TH STREET</i>	<i>5</i>	<i>23</i>
<i>KYANIZE PAINTS, INC.</i>	<i>1616 NORTH 14TH STREET</i>	<i>5</i>	<i>36</i>
<i>LEES DELUXE CLEANERS</i>	<i>1221 N 8TH ST</i>	<i>11</i>	<i>174</i>
<i>CHICAGO & ILLINOIS MIDLAND RR</i>	<i>15TH / NORTH GRAND AV</i>	<i>12</i>	<i>182</i>
<i>FIRST & ADAMS</i>	<i>NE / NW CORNERS 1ST &</i>	<i>18</i>	<i>284</i>
<i>AMEREN CILCO MGP #2</i>	<i>100 WEST WASHINGTON STR</i>	<i>18</i>	<i>302</i>
<i>TRAFFIC ENGINEERING SIGN SHOP</i>	<i>601 EAST JEFFERSON STRE</i>	<i>18</i>	<i>312</i>
<i>SALLY WARD CLEANERS</i>	<i>116 EAST JEFFERSON STRE</i>	<i>18</i>	<i>325</i>
<i>YOUNG'S SECURITY</i>	<i>400 NORTH 1ST STREET</i>	<i>18</i>	<i>354</i>
<i>SPRINGFIELD CREDIT UNION</i>	<i>825 EAST CARPENTER STRE</i>	<i>19</i>	<i>379</i>
<i>FARMER'S MARKET</i>	<i>700 WEST JEFFERSON STRE</i>	<i>23</i>	<i>410</i>
<i>CONCORD CUSTOM CLEANERS #041</i>	<i>128 SOUTH GRAND AVENUE</i>	<i>27</i>	<i>444</i>
<i>CVS PHARMACY</i>	<i>611 SOUTH GRAND AVENUE</i>	<i>27</i>	<i>453</i>
<i>PATTERSON BROTHERS</i>	<i>801 SOUTH GRAND AVENUE</i>	<i>27</i>	<i>456</i>
<i>HONEYWELL HOBBS CORPORATION</i>	<i>1034 EAST ASH STREET</i>	<i>30</i>	<i>495</i>
<i>FIAT-ALLIS CONSTRUCTION MACHIN</i>	<i>3000 S 6TH ST</i>	<i>43</i>	<i>577</i>
<i>KERASOTES CORPORATION OFFICES</i>	<i>755 APPLE ORCHARD ROAD</i>	<i>43</i>	<i>593</i>

EXECUTIVE SUMMARY

CDL: A listing of clandestine/meth drug lab locations.

A review of the CDL list, as provided by EDR, and dated 10/22/2009 has revealed that there are 2 CDL sites within the searched area.

<u>Site</u>	<u>Address</u>	<u>Map ID</u>	<u>Page</u>
Not reported	1611 NORTH 10TH STREET	5	30
Not reported	1335 N. 9TH STREET	11	178

AIRS: A listing of air permits and emissions information.

A review of the AIRS list, as provided by EDR, and dated 12/31/2008 has revealed that there are 8 AIRS sites within the searched area.

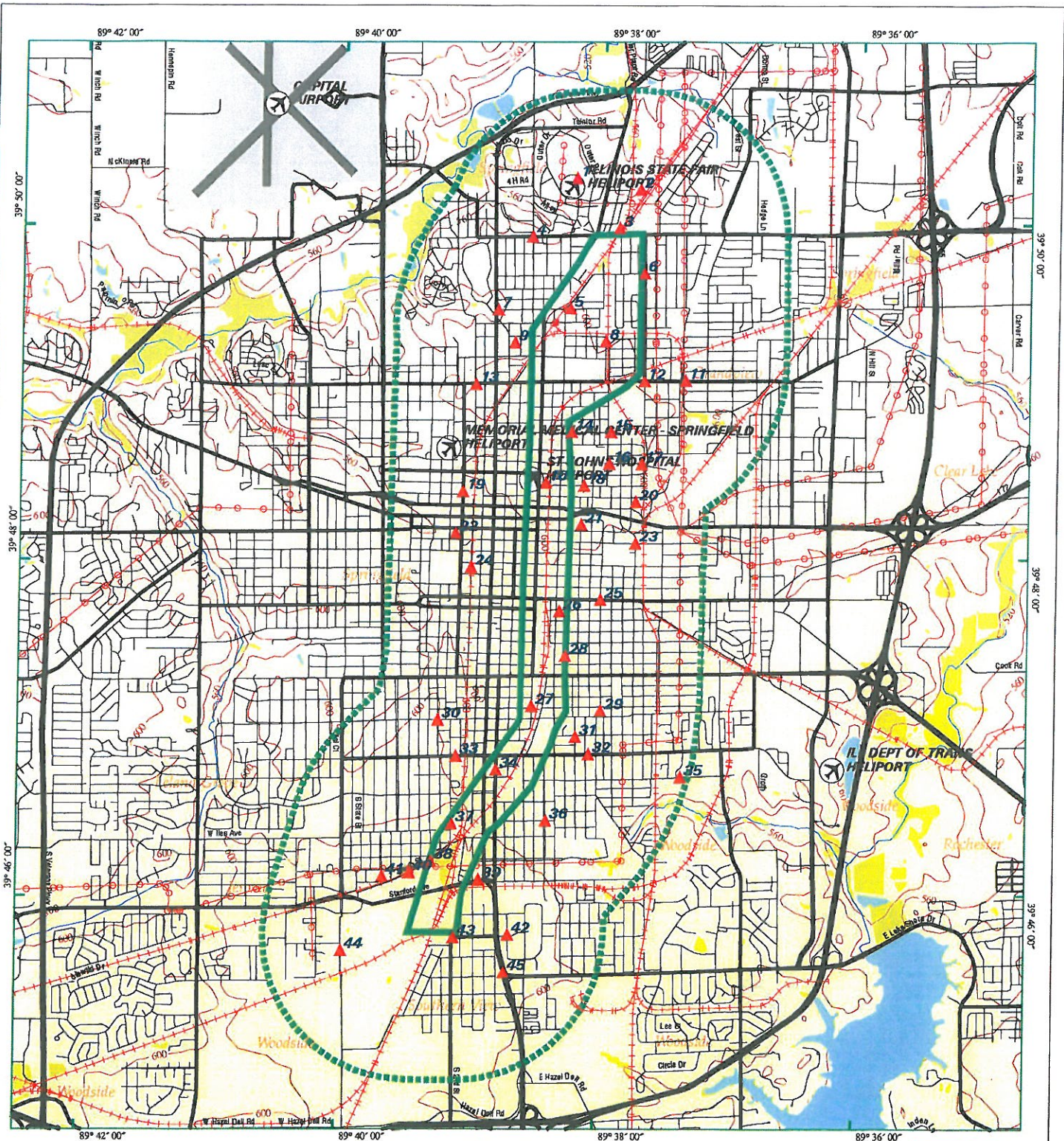
<u>Site</u>	<u>Address</u>	<u>Map ID</u>	<u>Page</u>
LEE'S DELUXE CLEANERS	1221 N 8TH ST	11	173
HICKOX APARTMENTS	631 S 4TH ST	18	225
WASHINGTON MIDDLE SCHOOL - DIS	230 E JACKSON ST	18	255
SALLY WARD LAUNDERERS & CLEANERS	116 E JEFFERSON ST	18	326
HUBBARD MILLING CO	426 N SECOND ST	18	364
PARK FUNERAL HOMES INC D/B/A S	437 N SIXTH ST	18	369
BISCH & SON MEMORIAL HOME	505 E ALLEN	27	466
STATE OF ILL. - ASH STREET GAR	200 E ASH ST	32	522

EDR PROPRIETARY RECORDS

Manufactured Gas Plants: The EDR Proprietary Manufactured Gas Plant Database includes records of coal gas plants (manufactured gas plants) compiled by EDR's researchers. Manufactured gas sites were used in the United States from the 1800's to 1950's to produce a gas that could be distributed and used as fuel. These plants used whale oil, rosin, coal, or a mixture of coal, oil, and water that also produced a significant amount of waste. Many of the byproducts of the gas production, such as coal tar (oily waste containing volatile and non-volatile chemicals), sludges, oils and other compounds are potentially hazardous to human health and the environment. The byproduct from this process was frequently disposed of directly at the plant site and can remain or spread slowly, serving as a continuous source of soil and groundwater contamination.

A review of the Manufactured Gas Plants list, as provided by EDR, has revealed that there are 7 Manufactured Gas Plants sites within the searched area.

<u>Site</u>	<u>Address</u>	<u>Map ID</u>	<u>Page</u>
SANGAMO ELECTRIC CO	823 N GRAND AVE E	11	90
CILCO GAS PLANT	825 NORTH MACARTHUR BOU	15	196
CILCO GAS PLANT	825 NORTH MACARTHUR BOU	15	196
FIRST & ADAMS	NE & NW CORNERS 1ST & A	18	288
FIRST & ADAMS	NE & NW CORNERS 1ST & A	18	288
FIRST AND ADAMS	NE AND NW CORNERS 1ST A	18	288
AMEREN CILCO MGO #2	100 W WASHINGTON STREET	18	303



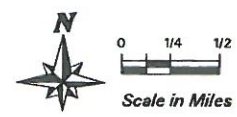
EDR DataMap® - Area Study

Tenth Street Corridor



Springfield, IL

- | | | |
|--|---------------|----------------------------|
| Listed Sites | Waterways | Water |
| Earthquake Epicenters (Richter 5 or greater) | Railroads | Superfund Sites |
| Search Boundary | Contour Lines | Federal DOD Sites |
| Roads | Pipelines | Indian Reservations BIA |
| Major Roads | Powerlines | National Wetland Inventory |
| | Fault Lines | |



Scale in Miles

EXECUTIVE SUMMARY

TARGET PROPERTY INFORMATION

ADDRESS

SPRINGFIELD, IL 62701
SPRINGFIELD, IL 62701

DATABASES WITH NO MAPPED SITES

No mapped sites were found in EDR's search of available ("reasonably ascertainable ") government records within the requested search area for the following databases:

FEDERAL RECORDS

NPL.....	National Priority List
Proposed NPL.....	Proposed National Priority List Sites
Delisted NPL.....	National Priority List Deletions
NPL LIENS.....	Federal Superfund Liens
LIENS 2.....	CERCLA Lien Information
RCRA-TSDF.....	RCRA - Transporters, Storage and Disposal
US ENG CONTROLS.....	Engineering Controls Sites List
US INST CONTROL.....	Sites with Institutional Controls
US CDL.....	Clandestine Drug Labs
US BROWNFIELDS.....	A Listing of Brownfields Sites
DOD.....	Department of Defense Sites
FUDS.....	Formerly Used Defense Sites
LUCIS.....	Land Use Control Information System
CONSENT.....	Superfund (CERCLA) Consent Decrees
ROD.....	Records Of Decision
UMTRA.....	Uranium Mill Tailings Sites
DEBRIS REGION 9.....	Torres Martinez Reservation Illegal Dump Site Locations
ODI.....	Open Dump Inventory
MINES.....	Mines Master Index File
TRIS.....	Toxic Chemical Release Inventory System
TSCA.....	Toxic Substances Control Act
SSTS.....	Section 7 Tracking Systems
PADS.....	PCB Activity Database System
RADINFO.....	Radiation Information Database
RAATS.....	RCRA Administrative Action Tracking System
PCB TRANSFORMER.....	PCB Transformer Registration Database
COAL ASH EPA.....	Coal Combustion Residues Surface Impoundments List
SCRD DRYCLEANERS.....	State Coalition for Remediation of Drycleaners Listing
FEDERAL FACILITY.....	Federal Facility Site Information listing
COAL ASH DOE.....	Sleam-Electric Plan Operation Data
FEMA UST.....	Underground Storage Tank Listing

STATE AND LOCAL RECORDS

NPDES..... A Listing of Active Permits

EXECUTIVE SUMMARY

UIC..... Underground Injection Wells
 IL NIPC..... Solid Waste Landfill Inventory
 IMPDMNT..... Surface Impoundment Inventory
 BROWNFIELDS..... Municipal Brownfields Redevelopment Grant Program Project Descriptions

TRIBAL RECORDS

INDIAN RESERV..... Indian Reservations
 INDIAN ODL..... Report on the Status of Open Dumps on Indian Lands
 INDIAN LUST..... Leaking Underground Storage Tanks on Indian Land
 INDIAN UST..... Underground Storage Tanks on Indian Land
 INDIAN VCP..... Voluntary Cleanup Priority Listing

SURROUNDING SITES: SEARCH RESULTS

Surrounding sites were identified.

Page numbers and map identification numbers refer to the EDR Radius Map report where detailed data on individual sites can be reviewed.

Sites listed in ***bold italics*** are in multiple databases.

Unmappable (orphan) sites are not considered in the foregoing analysis.

FEDERAL RECORDS

CERCLIS: The Comprehensive Environmental Response, Compensation and Liability Information System contains data on potentially hazardous waste sites that have been reported to the USEPA by states, municipalities, private companies and private persons, pursuant to Section 103 of the Comprehensive Environmental Response, Compensation and Liability Act (CERCLA). CERCLIS contains sites which are either proposed to or on the National Priorities List (NPL) and sites which are in the screening and assessment phase for possible inclusion on the NPL.

A review of the CERCLIS list, as provided by EDR, and dated 06/30/2009 has revealed that there is 1 CERCLIS site within the searched area.

<u>Site</u>	<u>Address</u>	<u>Map ID</u>	<u>Page</u>
<i>PIERCE WASTE OIL</i>	<i>1925 E MADISON ST</i>	<i>20</i>	<i>476</i>

CERC-NFRAP: Archived sites are sites that have been removed and archived from the inventory of CERCLIS sites. Archived status indicates that, to the best of EPA's knowledge, assessment at a site has been completed and that EPA has determined no further steps will be taken to list this site on the National Priorities List (NPL), unless information indicates this decision was not appropriate or other considerations require a recommendation for listing at a later time. This decision does not necessarily mean that there is no hazard associated with a given site; it only means that, based upon available information, the location is not judged to be a potential NPL site.

A review of the CERC-NFRAP list, as provided by EDR, and dated 06/23/2009 has revealed that there are 4 CERC-NFRAP sites within the searched area.

<u>Site</u>	<u>Address</u>	<u>Map ID</u>	<u>Page</u>
<i>KYANIZE PAINTS INCORPORATED</i>	<i>1616 NORTH FOURTEENTH S</i>	<i>5</i>	<i>33</i>

EXECUTIVE SUMMARY

<u>Site</u>	<u>Address</u>	<u>Map ID</u>	<u>Page</u>
COMANCHE OIL CORP (SIA)	400 E JEFFERSON ST	10	244
STEWART-WARNER HOBBS CORPORATI	YALE BOULEVARD & ASH ST	27	518
FIAT-ALLIS CONSTRUCTION MACHIN	3000 S 6TH ST	42	659

CORRACTS: CORRACTS is a list of handlers with RCRA Corrective Action Activity. This report shows which nationally-defined corrective action core events have occurred for every handler that has had corrective action activity.

A review of the CORRACTS list, as provided by EDR, and dated 09/15/2009 has revealed that there are 4 CORRACTS sites within the searched area.

<u>Site</u>	<u>Address</u>	<u>Map ID</u>	<u>Page</u>
KYANIZE PAINTS INCORPORATED	1616 NORTH FOURTEENTH S	5	33
PIERCE WASTE OIL	1925 E MADISON ST	20	476
STEWART-WARNER HOBBS CORPORATI	YALE BOULEVARD & ASH ST	27	518
LINCOLNLAND COMMUNITY COLLEGE	815 S AIRPORT DR-A	41	650

RCRA-LQG: RCRAInfo is EPA's comprehensive information system, providing access to data supporting the Resource Conservation and Recovery Act (RCRA) of 1976 and the Hazardous and Solid Waste Amendments (HSWA) of 1984. The database includes selective information on sites which generate, transport, store, treat and/or dispose of hazardous waste as defined by the Resource Conservation and Recovery Act (RCRA). Large quantity generators (LQGs) generate over 1,000 kilograms (kg) of hazardous waste, or over 1 kg of acutely hazardous waste per month.

A review of the RCRA-LQG list, as provided by EDR, and dated 12/11/2009 has revealed that there is 1 RCRA-LQG site within the searched area.

<u>Site</u>	<u>Address</u>	<u>Map ID</u>	<u>Page</u>
STUVE CARRIAGE HOUSE	526 S 7TH ST	10	187

RCRA-SQG: RCRAInfo is EPA's comprehensive information system, providing access to data supporting the Resource Conservation and Recovery Act (RCRA) of 1976 and the Hazardous and Solid Waste Amendments (HSWA) of 1984. The database includes selective information on sites which generate, transport, store, treat and/or dispose of hazardous waste as defined by the Resource Conservation and Recovery Act (RCRA). Small quantity generators (SQGs) generate between 100 kg and 1,000 kg of hazardous waste per month.

A review of the RCRA-SQG list, as provided by EDR, and dated 12/11/2009 has revealed that there are 38 RCRA-SQG sites within the searched area.

<u>Site</u>	<u>Address</u>	<u>Map ID</u>	<u>Page</u>
MARTEL LABORATORY SERVICES INC	1438 SANGAMON AVE	3	9
CHAMPION GARAGE INC	820 BLACK AVE	5	31
NUTRONICS	1703 PEORIA RD	5	49
CASEYS GENERAL STORE	1900 PEORIA RD	5	58
LINCOLNLAND OIL BULK PLANT	2026 REPUBLIC DR	5	63
TMI ANALYTICAL SERVICES	2110 N REPUBLIC ST	5	68
NORFOLK AND WESTERN RAILWAY CO	MILE POST 417 STARNES T	9	80

EXECUTIVE SUMMARY

<u>Site</u>	<u>Address</u>	<u>Map ID</u>	<u>Page</u>
FRANKLIN LIFE	800 S 6TH	10	95
STOLDTS JACK SVC	717 S FIFTH	10	151
IL BELL	555 E COOK ST	10	158
AT&T	620 S 5TH ST	10	159
CLARK OIL AND REFINING CORP	601 S NINTH ST	10	162
SHUTT HOUSE	525 S EIGHTH ST	10	183
AMOCO STATION 8583	420 S NINTH ST	10	196
LINCOLNS HOME	413 8TH ST	10	202
SANGAMON CNTY SHERIFF GARAGE	1001 AND HALF E MONROE	10	209
IL HISTORIC PRESERVATION AGENC	617 E JEFFERSON	10	237
CWLP WATER DEPT	401 N 11TH ST	10	253
ST JOHNS HOSPITAL	800 CARPENTER ST	10	262
IEPA HHW COLLECTION	1021 NORTH GRAND AVE E	10	305
LEES DELUXE CLEANERS	1221 N 8TH ST	10	443
ONE HOUR MARTINIZING	1501 E COOK ST	25	507
ST KATHERINE DREXEL PARISH	722 S 12TH ST	26	512
BOLL PAINTING	2224 S 9TH ST	27	512
STEWART-WARNER HOBBS CORPORATI	YALE BOULEVARD & ASH ST	27	518
OFFICE SECREATRY STATE STORAGE	11TH AND ASH ST	27	543
BOLL PAINTING	1935 S 10 L 2	27	546
PPG INDUSTRIES INC	1839 S 11TH ST	27	551
LAUREL ST LDRMT AND DRYCLNR	1801 S 11TH ST	27	571
PRINTING CENTER THE	1620 S FIFTH ST	27	573
WESTERN AUTO	616 S GRAND E	27	595
IL CENTRAL MGMT SERV DEPT OF V	200 E ASH ST	33	616
SEARS P/S 9660	2548 S FIRST ST	37	623
NIEMCZYK PAINTING & PAPER CO	312 B NORTH ST	38	626
KIMS AUTOBODY & PAINT	310 NORTH ST	38	628
AYERCO SELF SVC	430 STANFORD	39	644
WOODSIDE TOWNSHIP	490 NORTH ST	40	649
LINCOLNLAND COMMUNITY COLLEGE	815 S AIRPORT DR-A	41	650

RCRA-CESQG: RCRAInfo is EPA's comprehensive information system, providing access to data supporting the Resource Conservation and Recovery Act (RCRA) of 1976 and the Hazardous and Solid Waste Amendments (HSWA) of 1984. The database includes selective information on sites which generate, transport, store, treat and/or dispose of hazardous waste as defined by the Resource Conservation and Recovery Act (RCRA). Conditionally exempt small quantity generators (CESQGs) generate less than 100 kg of hazardous waste, or less than 1 kg of acutely hazardous waste per month.

A review of the RCRA-CESQG list, as provided by EDR, and dated 12/11/2009 has revealed that there are 29 RCRA-CESQG sites within the searched area.

<u>Site</u>	<u>Address</u>	<u>Map ID</u>	<u>Page</u>
ONE HOUR MARTINIZING	1865 SANGAMON AVE	3	10
SOUTHERN PACIFIC TRANSP CO	1701 E SANGAMON ST	3	13
THOMAS AUTO PRECISION	1312 E MORTON	5	29
BYRNE, THOMAS	1650 N 14TH ST	5	44
YORK INTERNATIONAL	1615 PEORIA RD REAR	5	47
CREATIVE AUTOBODY	2008 N 14TH ST	5	65
WORLD WIDE REFINISHING SYSTEMS	11TH & JOLES	5	71
THOMAS AUTO SUPPLY	1117 S 9TH ST	10	85
FRANKLIN LIFE	808 S EIGHTH ST	10	97
FINDLEY PAUL FEDERAL BUILDING	600 EAST MONROE	10	211

EXECUTIVE SUMMARY

<u>Site</u>	<u>Address</u>	<u>Map ID</u>	<u>Page</u>
<i>SPRINGFIELD HILTON</i>	<i>700 E ADAMS ST</i>	<i>10</i>	<i>214</i>
<i>RENAISSANCE SPRINGFIELD HOTEL</i>	<i>701 E ADAMS</i>	<i>10</i>	<i>223</i>
<i>MYERS FAMILY REAL ESTATE LLC</i>	<i>1 W OLD STATE CAPITOL P</i>	<i>10</i>	<i>228</i>
<i>CAR X</i>	<i>1024 E JEFFERSON</i>	<i>10</i>	<i>231</i>
<i>SPRINGFIELD SIGN</i>	<i>919 E ENOS</i>	<i>10</i>	<i>273</i>
<i>ONE DAY CLEANERS</i>	<i>816 NO. NINTH ST.</i>	<i>10</i>	<i>277</i>
<i>HARPER OIL COMPANY</i>	<i>1028 N 9T ST</i>	<i>10</i>	<i>289</i>
<i>SOUTHARD AUTO SVCS</i>	<i>1613 N GRAND AVE E</i>	<i>10</i>	<i>387</i>
<i>IEPA PRINT SHOP</i>	<i>1340 N 9TH ST</i>	<i>10</i>	<i>450</i>
<i>IL STATE POLICE</i>	<i>2168 S NINTH ST</i>	<i>27</i>	<i>514</i>
<i>WARECO SERV STA #111</i>	<i>900 E LAUREL</i>	<i>27</i>	<i>559</i>
<i>AMOCO, LESS</i>	<i>1700 S 5TH</i>	<i>27</i>	<i>560</i>
<i>AUTOMOTIVE REFINISHING TECHNOL</i>	<i>1013 E LAUREL</i>	<i>27</i>	<i>568</i>
<i>HANSON PROFESSIONAL SERVICES I</i>	<i>1525 S 6TH ST</i>	<i>27</i>	<i>584</i>
<i>FENSTERMAKER AND SONS AUTO BOD</i>	<i>1530 S 10 ONE HALF ST</i>	<i>27</i>	<i>587</i>
<i>ONE HOUR MARTINIZING</i>	<i>1400 S EIGHTH ST</i>	<i>27</i>	<i>597</i>
<i>FINKS CUSTOM DRAPERIES</i>	<i>2756 S 6TH</i>	<i>39</i>	<i>631</i>
<i>FURROW BLDG MATERIALS</i>	<i>2744 S 6TH</i>	<i>39</i>	<i>635</i>
<i>VERSTREATRA, TED</i>	<i>224 APPLE ORCHARD RD</i>	<i>43</i>	<i>676</i>

RCRA-NonGen: RCRAInfo is EPA's comprehensive information system, providing access to data supporting the Resource Conservation and Recovery Act (RCRA) of 1976 and the Hazardous and Solid Waste Amendments (HSWA) of 1984. The database includes selective information on sites which generate, transport, store, treat and/or dispose of hazardous waste as defined by the Resource Conservation and Recovery Act (RCRA). Non-Generators do not presently generate hazardous waste.

A review of the RCRA-NonGen list, as provided by EDR, and dated 12/11/2009 has revealed that there are 32 RCRA-NonGen sites within the searched area.

<u>Site</u>	<u>Address</u>	<u>Map ID</u>	<u>Page</u>
<i>TRUMAN L FLATT AND SONS INC</i>	<i>2300 NORTH 16TH STREET</i>	<i>3</i>	<i>21</i>
<i>PROFESSIONAL DEVELOPMENT CO</i>	<i>1545 N 11TH ST</i>	<i>5</i>	<i>27</i>
<i>KYANIZE PAINTS INCORPORATED</i>	<i>1616 NORTH FOURTEENTH S</i>	<i>5</i>	<i>33</i>
<i>CHURCHILLS EUROSPORT</i>	<i>1600 N MICHIGAN AVE</i>	<i>8</i>	<i>76</i>
<i>MURRAY</i>	<i>BROWNING RD</i>	<i>9</i>	<i>78</i>
<i>SPRINGFIELD MASS TRANSIT</i>	<i>928 S 9TH ST</i>	<i>10</i>	<i>89</i>
<i>FIRST OF AMERICA TRUST</i>	<i>737 E COOK ST</i>	<i>10</i>	<i>156</i>
<i>VACHEL LINDSEY HOME</i>	<i>603 S FIFTH ST</i>	<i>10</i>	<i>178</i>
<i>LUCENT TECHNOLOGIES INC</i>	<i>601 S SIXTH ST</i>	<i>10</i>	<i>181</i>
<i>EVCO NATIONAL</i>	<i>508 S 8TH ST</i>	<i>10</i>	<i>184</i>
<i>THE STATE JOURNAL REGISTER</i>	<i>1 COPLEY PLAZA</i>	<i>10</i>	<i>197</i>
<i>MARINE BANK TRUST DEPT</i>	<i>307 TO 309 S FOURTH</i>	<i>10</i>	<i>216</i>
<i>PRAIRIE CAPITOL CONVENTION CTR</i>	<i>ONE CONVENTION CENTER P</i>	<i>10</i>	<i>225</i>
<i>SPRINGFIELD HOUSING JOHN HAY</i>	<i>200 N 11TH</i>	<i>10</i>	<i>235</i>
<i>TRAFFIC ENG SIGN SHOP</i>	<i>601 E JEFFERSON ST</i>	<i>10</i>	<i>241</i>
<i>AMEREN CIPS-SPRINGFIELD LAB</i>	<i>217 N 9TH ST</i>	<i>10</i>	<i>245</i>
<i>SPRINGFIELD CWLP FACILITY</i>	<i>1006 E REYNOLDS</i>	<i>10</i>	<i>256</i>
<i>LICATAS CLEANERS</i>	<i>822 E MILLER</i>	<i>10</i>	<i>270</i>
<i>9TH ST AMOCO FOOD SHOP</i>	<i>1201 N 9TH</i>	<i>10</i>	<i>303</i>
<i>JEWEL FOOD STORES</i>	<i>909 E CONVERSE</i>	<i>10</i>	<i>452</i>
<i>AUTO BODY CENTER</i>	<i>1004 N 12TH ST</i>	<i>14</i>	<i>460</i>
<i>CARGILL INCORP</i>	<i>1525 E PHILLIPS</i>	<i>15</i>	<i>464</i>
<i>SPRINGFIELD HOUSING AUTHORITY</i>	<i>1320 E REYNOLDS</i>	<i>18</i>	<i>470</i>

EXECUTIVE SUMMARY

<u>Site</u>	<u>Address</u>	<u>Map ID</u>	<u>Page</u>
PIERCE WASTE OIL	1925 E MADISON ST	20	476
STAAB BATTERY MFG CO INC	931 S ELEVENTH	26	508
PRINTING CENTER THE	1602 S FIFTH ST	27	575
SHERWIN WILLIAMS CO THE	1730 S 6TH ST	27	576
SUNOCO SERVICE STATION	601 S GRAND	27	592
ACE OIL SERVICES LTD	1118 S SIXTH ST	27	605
ILDOT BUR MTL S PHY RES	126 E ASH ST	33	613
LUBE MASTER	415 E STANFORD	39	646
FIAT-ALLIS CONSTRUCTION MACHIN	3000 S 6TH ST	42	659

ERNS: The Emergency Response Notification System records and stores information on reported releases of oil and hazardous substances. The source of this database is the U.S. EPA.

A review of the ERNS list, as provided by EDR, and dated 08/31/2009 has revealed that there are 3 ERNS sites within the searched area.

<u>Site</u>	<u>Address</u>	<u>Map ID</u>	<u>Page</u>
SOUTHERN ILL UNIV SCHOOL OF ME	SOUTHERN ILL UNIV SCHOO	5	29
11TH AND JACKSON ST	11TH AND JACKSON ST	10	196
320 E STANFORD AVE	320 E STANFORD AVE	39	645

HMIRS: The Hazardous Materials Incident Report System contains hazardous material spill incidents reported to the Department of Transportation. The source of this database is the U.S. EPA.

A review of the HMIRS list, as provided by EDR, and dated 10/05/2009 has revealed that there are 3 HMIRS sites within the searched area.

<u>Site</u>	<u>Address</u>	<u>Map ID</u>	<u>Page</u>
Not reported	1309 RIDGELY AVENUE	5	55
Not reported	1720 S 9TH ST	27	579
Not reported	1720 S 9TH ST	27	579

Department of Transportation, Office of Pipeline Safety Incident and Accident data.

A review of the DOT OPS list, as provided by EDR, and dated 10/13/2009 has revealed that there is 1 DOT OPS site within the searched area.

<u>Site</u>	<u>Address</u>	<u>Map ID</u>	<u>Page</u>
CENTRAL ILLINOIS LIGHT CO	1117 EAST JACKSON STR	10	194

EXECUTIVE SUMMARY

FTTS: FTTS tracks administrative cases and pesticide enforcement actions and compliance activities related to FIFRA, TSCA and EPCRA (Emergency Planning and Community Right-to-Know Act) over the previous five years. To maintain currency, EDR contacts the Agency on a quarterly basis.

A review of the FTTS list, as provided by EDR, and dated 04/09/2009 has revealed that there are 2 FTTS sites within the searched area.

<u>Site</u>	<u>Address</u>	<u>Map ID</u>	<u>Page</u>
<i>SANGAMO COMPLEX</i>	<i>1313 N 11TH ST</i>	<i>10</i>	<i>449</i>
<i>STEWART WARNER HOBBS CORP</i>	<i>ASH ST & YALE BLVD</i>	<i>27</i>	<i>524</i>

HIST FTTS: A complete administrative case listing from the FIFRA/TSCA Tracking System (FTTS) for all ten EPA regions. The information was obtained from the National Compliance Database (NCDB). NCDB supports the implementation of FIFRA (Federal Insecticide, Fungicide, and Rodenticide Act) and TSCA (Toxic Substances Control Act). Some EPA regions are now closing out records. Because of that, and the fact that some EPA regions are not providing EPA Headquarters with updated records, it was decided to create a HIST FTTS database. It included records that may not be included in the newer FTTS database updates. This database is no longer updated.

A review of the HIST FTTS list, as provided by EDR, and dated 10/19/2006 has revealed that there are 3 HIST FTTS sites within the searched area.

<u>Site</u>	<u>Address</u>	<u>Map ID</u>	<u>Page</u>
ST JOHNS HOSPITAL	800 E CARPENTER	10	269
<i>SANGAMO COMPLEX</i>	<i>1313 N 11TH ST</i>	<i>10</i>	<i>449</i>
<i>STEWART WARNER HOBBS CORP</i>	<i>ASH ST & YALE BLVD</i>	<i>27</i>	<i>524</i>

ICIS: The Integrated Compliance Information System (ICIS) supports the information needs of the national enforcement and compliance program as well as the unique needs of the National Pollutant Discharge Elimination System (NPDES) program.

A review of the ICIS list, as provided by EDR, and dated 08/21/2009 has revealed that there is 1 ICIS site within the searched area.

<u>Site</u>	<u>Address</u>	<u>Map ID</u>	<u>Page</u>
LGG REALTY & INVESTMENT CO	1313 NORTH 11TH STREET	10	448

MLTS: The Material Licensing Tracking System is maintained by the Nuclear Regulatory Commission and contains a list of approximately 8,100 sites which possess or use radioactive materials and are subject to NRC licensing requirements.

A review of the MLTS list, as provided by EDR, and dated 09/25/2009 has revealed that there are 3 MLTS sites within the searched area.

<u>Site</u>	<u>Address</u>	<u>Map ID</u>	<u>Page</u>
ILLINOIS, STATE OF	134 NORTH 9TH STREET	10	230
ST. JOHN'S HOSPITAL	800 E. CARPENTER	10	269
<i>HANSON PROFESSIONAL SERVICES I</i>	<i>1525 S 6TH ST</i>	<i>27</i>	<i>584</i>

EXECUTIVE SUMMARY

FINDS: The Facility Index System contains both facility information and "pointers" to other sources of information that contain more detail. These include: RCRIS; Permit Compliance System (PCS); Aerometric Information Retrieval System (AIRS); FATES (FIFRA [Federal Insecticide Fungicide Rodenticide Act] and TSCA Enforcement System, FTTS [FIFRA/TSCA Tracking System]; CERCLIS; DOCKET (Enforcement Docket used to manage and track information on civil judicial enforcement cases for all environmental statutes); Federal Underground Injection Control (FURS); Federal Reporting Data System (FRDS); Surface Impoundments (SIA); TSCA Chemicals in Commerce Information System (CICS); PADS; RCRA-J (medical waste transporters/disposers); TRIS; and TSCA. The source of this database is the U.S. EPA/NTIS.

A review of the FINDS list, as provided by EDR, and dated 10/19/2009 has revealed that there are 172 FINDS sites within the searched area.

<u>Site</u>	<u>Address</u>	<u>Map ID</u>	<u>Page</u>
BLACKSTONE GROUP	1400 SANGAMON AVE	3	7
MARTEL LABORATORY SERVICES INC	1438 SANGAMON AVE	3	9
ONE HOUR MARTINIZING	1865 SANGAMON AVE	3	10
TURRIS COAL CO	1701 E SANGAMON	3	15
SOUTHERN PACIFIC TRANS CO	1701 SANGAMON AVE	3	17
CHICAGO MISSOURI AND WESTERN R	1701 E SANGAMON AVE	3	17
TRUMAN L FLATT AND SONS INC	2300 NORTH 16TH STREET	3	21
PROFESSIONAL DEVELOPMENT CO	1545 N 11TH ST	5	27
THOMAS AUTO PRECISION	1312 E MORTON	5	29
CHAMPION GARAGE INC	820 BLACK AVE	5	31
ROY'S RADIATOR	1601 N 9TH ST	5	33
KYANIZE PAINTS INCORPORATED	1616 NORTH FOURTEENTH S	5	33
OKP INC	1616 N 14TH ST	5	40
BYRNE, THOMAS A	1650 N 14TH	5	46
YORK INTERNATIONAL	1615 PEORIA RD REAR	5	47
LINCOLN YELLOW CAB	1700 FACTORY RD	5	49
NUTRONICS	1703 PEORIA RD	5	49
CAPITOL ENGRAVING CO	1703 PEORIA RD-A	5	53
PRESTON TRUCKING CO	1309 RIDGELY AVE	5	54
FJ MURPHY & SON INC	1800 FACTORY AVE	5	55
FANCY AUTO REPAIR	1804 PEORIA RD	5	57
CASEYS GENERAL STORE	1900 PEORIA RD	5	58
MR TIRE	1921 PEORIA RD	5	60
LINCOLNLAND OIL BULK PLANT	2026 REPUBLIC DR	5	63
BRITZ AUTO	1303 GRIFFITHS	5	64
CREATIVE AUTOBODY	2008 N 14TH ST	5	65
TMI ANALYTICAL SVCS	2110 W REPUBLIC ST	5	68
SPRINGFIELD FIRE DEPT	PEORIA & PERCY	5	71
WORLD WIDE REFINISHING SYSTEMS	11TH & JOLES	5	71
LARGE, DEAN	517 RIDGELY	7	74
CHURCHILLS EUROSPOORT	1600 N MICHIGAN AVE	8	76
MURRAY	BROWNING RD	9	78
NORFOLK AND WESTERN RAILWAY CO	MILE POST 417 STARNES T	9	80
THOMAS AUTO SUPPLY	1117 S 9TH	10	84
STILTZ	1110 S 9TH ST	10	86
MERVIS IRON AND SUPPLY CO	1100 SO. 9TH STREET	10	87
NEAL TIRE 1	1014 S 9TH ST	10	88
NORFOLK & WESTERN RR	1008 S 9TH	10	88
SENTINEL INSECT CONTROL	1001 S. 9TH ST	10	89
SPRINGFIELD MASS TRANSIT	928 S 9TH ST	10	89
FRANKLIN LIFE	800 S 6TH	10	95
FRANKLIN LIFE	808 S EIGHTH ST	10	97
ROBERT C NELCH	800 S. 9TH STREET	10	98
HENRY NELCH & SON CO INC	800 S 9TH ST	10	99
STOLDTS JACK SVC	717 S FIFTH	10	151

EXECUTIVE SUMMARY

<u>Site</u>	<u>Address</u>	<u>Map ID</u>	<u>Page</u>
<i>FIRST OF AMERICA TRUST</i>	<i>737 E COOK ST</i>	<i>10</i>	<i>156</i>
<i>IL BELL</i>	<i>555 E COOK ST</i>	<i>10</i>	<i>158</i>
<i>AT&T</i>	<i>620 S 5TH ST</i>	<i>10</i>	<i>159</i>
<i>CLARK OIL AND REFINING CORP</i>	<i>601 S NINTH ST</i>	<i>10</i>	<i>162</i>
SCHADOWS SVC	1020 E EDWARDS	10	164
<i>CAPITOL WOOD WORKS</i>	<i>1010 E EDWARDS</i>	<i>10</i>	<i>164</i>
<i>VACHEL LINDSEY HOME</i>	<i>603 S FIFTH ST</i>	<i>10</i>	<i>178</i>
<i>LUCENT TECHNOLOGIES INC</i>	<i>601 S SIXTH ST</i>	<i>10</i>	<i>181</i>
<i>SHUTT HOUSE</i>	<i>525 S EIGHTH ST</i>	<i>10</i>	<i>183</i>
EVCO NATIONAL	508 S 8TH ST	10	187
MASON, FRANK	520 S 9TH ST	10	190
<i>AMOCO STATION 8583</i>	<i>420 S NINTH ST</i>	<i>10</i>	<i>196</i>
<i>THE STATE JOURNAL REGISTER</i>	<i>1 COPLEY PLAZA</i>	<i>10</i>	<i>197</i>
AMOCO 8583	420 S 9TH ST	10	201
<i>LINCOLNS HOME</i>	<i>413 8TH ST</i>	<i>10</i>	<i>202</i>
SANGAMO CO SHERIFF	9TH & CAPITOL	10	206
WEST CENTRAL REGIONAL PROGRAM	300 S ELEVENTH	10	208
SANGAMON COUNTY SHERIFF GARAGE	1001 1/2 E MONROE	10	208
<i>SANGAMON CNTY SHERIFF GARAGE</i>	<i>1001 AND HALF E MONROE</i>	<i>10</i>	<i>209</i>
<i>FINDLEY PAUL FEDERAL BUILDING</i>	<i>600 EAST MONROE</i>	<i>10</i>	<i>211</i>
<i>SPRINGFIELD HILTON</i>	<i>700 E ADAMS ST</i>	<i>10</i>	<i>214</i>
<i>MARINE BANK TRUST DEPT</i>	<i>307 TO 309 S FOURTH</i>	<i>10</i>	<i>216</i>
BUNN CAPITOL	917 E ADAMS ST	10	219
SANGAMON, COUNTY OF	200 S 9TH ST	10	221
<i>PHILLIPS BROS INC</i>	<i>831 E ADAMS</i>	<i>10</i>	<i>222</i>
<i>RENAISSANCE SPRINGFIELD HOTEL</i>	<i>701 E ADAMS</i>	<i>10</i>	<i>223</i>
<i>PRAIRIE CAPITOL CONVENTION CTR</i>	<i>ONE CONVENTION CENTER P</i>	<i>10</i>	<i>225</i>
CARX	1024 E JEFFERSON	10	231
<i>CAR X</i>	<i>1024 E JEFFERSON</i>	<i>10</i>	<i>231</i>
SPRINGFIELD HOUSING AUTHORITY	200 N 11TH ST	10	235
<i>IL HISTORIC PRESERVATION AGENC</i>	<i>617 E JEFFERSON</i>	<i>10</i>	<i>237</i>
<i>TRAFFIC ENG SIGN SHOP</i>	<i>601 E JEFFERSON ST</i>	<i>10</i>	<i>241</i>
<i>AMEREN CIPS-SPRINGFIELD LAB</i>	<i>217 N 9TH ST</i>	<i>10</i>	<i>245</i>
<i>LINCOLN SCHOOL</i>	<i>300 S 11TH ST</i>	<i>10</i>	<i>248</i>
ST JOHNS EAST	400 N 9TH ST	10	254
<i>SPRINGFIELD CWLP FACILITY</i>	<i>1006 E REYNOLDS</i>	<i>10</i>	<i>256</i>
ST JOHNS HOSPITAL	800 E CARPENTER ST	10	266
<i>LICATAS CLEANERS</i>	<i>822 E MILLER</i>	<i>10</i>	<i>270</i>
AUTOZONE 456	721 N 9TH ST	10	271
<i>SPRINGFIELD SIGN</i>	<i>919 E ENOS</i>	<i>10</i>	<i>273</i>
ADVANCE AUTO PARTS 6206	802 N 9TH ST	10	276
<i>ONE DAY CLEANERS</i>	<i>816 NO. NINTH ST.</i>	<i>10</i>	<i>277</i>
C&D ENTERPRISES	920 E PHILLIPS	10	280
1007 N 9TH	1007 N 9TH	10	280
1018 N 9TH ST	1018 N 9TH ST	10	280
<i>HARPER OIL CO</i>	<i>1028 N 9TH ST</i>	<i>10</i>	<i>284</i>
ILLICO INDEPENDANT OIL CO	1102 N 9TH ST	10	290
1155 N 9TH ST	1155 N 9TH ST	10	293
1227 N 13TH	1227 N 13TH	10	293
NOONANS TRUE VALUE	801 NORTH GRAND AVE E	10	297
SMITH OIL CO	1201 N 9TH ST	10	301
<i>BP PRODUCTS NORTH AMERICA INC</i>	<i>1201 N 9TH</i>	<i>10</i>	<i>302</i>
<i>9TH ST AMOCO FOOD SHOP</i>	<i>1201 N 9TH</i>	<i>10</i>	<i>303</i>
IEPA	1021 NORTH GRAND AVE E	10	305
<i>IEPA HHW COLLECTION</i>	<i>1021 NORTH GRAND AVE E</i>	<i>10</i>	<i>305</i>
<i>SANGAMO ELECTRIC CO</i>	<i>1301 N 11TH ST</i>	<i>10</i>	<i>382</i>

EXECUTIVE SUMMARY

Site	Address	Map ID	Page
LANPHIER HIGH SCHOOL - DIST 18	1300 N 11TH ST	10	383
IEPA SANGAMO COMPLEX	NORTH GRAND AVE E & 11T	10	385
EDISON MIDDLE SCHOOL - DIST. 1	1300 N. 11TH STREET	10	385
ILLINOIS & MIDLAND RAILROAD IN	1500 N GRAND AVE E	10	386
SPRINGFIELD RECREATION	1415 NORTH GRAND AVE E	10	386
SOUTHARD AUTO SVCS	1613 N GRAND AVE E	10	387
AUTO TECH	1613 NORTH GRAND AVE E	10	389
ILLINOIS & MIDLAND RR INC	15TH & N GRAND AVE E	10	391
LEES DELUXE CLEANERS	1221 N 8TH ST	10	443
LG&G REALTY	1311 N 11TH ST	10	448
SANGAMO COMPLEX	1313 N 11TH ST	10	449
LGG REALTY & INVESTMENT CO	1313 NORTH 11TH STREET	10	450
IEPA PRINT SHOP	1340 N 9TH ST	10	450
IEPA BUILDING,	1340 N 9TH ST	10	452
JEWEL FOOD STORES	909 E CONVERSE	10	452
AUTO BODY CENTER	1004 N 12TH ST	14	460
CARGILL INCORP	1525 E PHILLIPS	15	464
SPRINGFIELD HOUSING AUTHORITY	1320 E REYNOLDS	18	470
PIERCE WASTE OIL	1925 E MADISON ST	20	476
ONE HOUR MARTINIZING	1501 E COOK ST	25	507
STAAB BATTERY MFG CO INC	931 S ELEVENTH	26	508
ARMINTROUT TIRE & AUTO	901 S 11TH	26	511
BOLL PAINTING	2224 S 9TH ST	27	512
SANDRA COE	2171 S 9TH	27	514
IL STATE POLICE	2168 S NINTH ST	27	514
IL STATE POLICE	2168 S 9TH ST	27	517
METRIC WRENCH	2160 S 9TH	27	517
STEWART-WARNER HOBBS CORPORATI	YALE BOULEVARD & ASH ST	27	518
EISNER FOOD STORE 42	740 E ASH	27	523
PARIS CLEANERS-FURRIERS INC	1013 E ASH ST	27	526
OFFICE SECREATRY STATE STORAGE	11TH AND ASH ST	27	543
HENRY NELCH & SON CO	1947 S 10 1/2 ST	27	545
BOLL PAINTING	1935 S 10 L 2	27	546
BOLL PAINTING	1935 S 10 1/2	27	548
IL CMS	1924 S 10TH ST	27	548
NAPIER MACHINE & WELDING	1925 S 10 1/2 ST	27	548
1907 S 10 1/2 ST	1907 S 10 1/2 ST	27	549
CAPITOL PLUMBING & HEATING	1900 S 8TH ST	27	550
PPG INDUSTRIES INC	1839 S 11TH ST	27	551
WARECO SERV STA #111	900 E LAUREL	27	559
AMOCO, LESS	1700 S 5TH	27	560
HURRICANE FENCE COMPANY	1000 E LAUREL	27	567
AUTOMOTIVE REFINISHING TECHNOL	1013 E LAUREL	27	568
SEVEN BROTHERS GROCERY	1801 S 11TH ST	27	571
LAUREL ST LDRMT AND DRYCLNR	1801 S 11TH ST	27	571
PRINTING CENTER THE	1602 S FIFTH ST	27	575
SHERWIN WILLIAMS CO THE	1730 S 6TH ST	27	576
MIDAS MUFFLER & BRAKE SHOP	1529 S 9TH ST	27	583
FENSTERMAKER & SON AUTOBODY	1530 S 10 1/2 ST	27	589
BABCOOK	1427 S 10 1/2 ST	27	590
SUNOCO SERVICE STATION	601 S GRAND	27	592
WESTERN AUTO	616 S GRAND E	27	595
PATTERSON ENTERPRISES	801 SOUTH GRAND AVE E	27	596
ONE HOUR MARTINIZING	1400 S EIGHTH ST	27	597
LONS TIRE & AUTO CLINIC	831 SOUTH GRAND AVE E	27	600
BOURBON STREET TAVERN	1031 S GRAND AVE EAST	27	602

EXECUTIVE SUMMARY

<u>Site</u>	<u>Address</u>	<u>Map ID</u>	<u>Page</u>
ACE OIL SERVICES LTD	1118 S SIXTH ST	27	605
WORTHY	1222 S 12TH ST	28	608
ILDOT BUR MTLs PHY RES	126 E ASH ST	33	613
IL CENTRAL MGMT SERV DEPT OF V	200 E ASH ST	33	616
SEARS P/S 9660	2548 S FIRST ST	37	623
EARLY LEARNING CENTER	2501 S 1ST ST	37	625
NIEMCZYK PAINTING & PAPER CO	312 B NORTH ST	38	626
KIMS AUTOBODY & PAINT	310 NORTH ST	38	628
FINKS CUSTOM DRAPERIES	2756 S 6TH	39	631
FURROW BLDG MATERIALS	2744 S 6TH	39	635
AYERCO SELF SVC	430 STANFORD	39	644
LUBE MASTER	415 E STANFORD	39	646
WOODSIDE TOWNSHIP	490 NORTH ST	40	649
LINCOLNLAND COMMUNITY COLLEGE	815 S AIRPORT DR-A	41	650
FIAT-ALLIS CONSTRUCTION MACHIN	3000 S 6TH ST	42	659

US HIST CDL: A listing of clandestine drug lab locations. The U.S. Department of Justice ("the Department") provides this web site as a public service. It contains addresses of some locations where law enforcement agencies reported they found chemicals or other items that indicated the presence of either clandestine drug laboratories or dumpsites. In most cases, the source of the entries is not the Department, and the Department has not verified the entry and does not guarantee its accuracy. Members of the public must verify the accuracy of all entries by, for example, contacting local law enforcement and local health departments.

A review of the US HIST CDL list, as provided by EDR, and dated 09/01/2007 has revealed that there is 1 US HIST CDL site within the searched area.

<u>Site</u>	<u>Address</u>	<u>Map ID</u>	<u>Page</u>
1315 1/2 E RESERVOIR ST	1315 1/2 E RESERVOIR ST	10	293

STATE AND LOCAL RECORDS

SHWS: The State Hazardous Waste Sites records are the states' equivalent to CERCLIS. These sites may or may not already be listed on the federal CERCLIS list. Priority sites planned for cleanup using state funds (state equivalent of Superfund) are identified along with sites where cleanup will be paid for by potentially responsible parties. The data come from the Illinois Environmental Protection Agency's Category List.

A review of the SHWS list, as provided by EDR, and dated 11/16/2009 has revealed that there are 5 SHWS sites within the searched area.

<u>Site</u>	<u>Address</u>	<u>Map ID</u>	<u>Page</u>
KYANIZE PAINT	1616 NORTH 14TH STREET	5	44
MURRAY SALVAGE		10	83
MERVIS		10	87
MORECO ENERGY	1925 E MADISON ST	17	470
CRENSHAW DRUM DISPOSAL SITE	2106 CORNELL AVE EAST	35	621

EXECUTIVE SUMMARY

CAT: Illinois Category List.

A review of the CAT list, as provided by EDR, and dated 06/01/1997 has revealed that there are 6 CAT sites within the searched area.

<u>Site</u>	<u>Address</u>	<u>Map ID</u>	<u>Page</u>
KYANIZE PAINTS INCORPORATED Facility Type: SITE REMEDIATION PROGRAM	1616 NORTH FOURTEENTH S	5	33
MURRAY SALVAGE Facility Type: NOTICE RESPONSE ACTION SITE		10	83
MERVIES IRON & SUPPLY Facility Type: SITE REMEDIATION PROGRAM		10	84
MERVIS Facility Type: NOTICE RESPONSE ACTION SITE		10	87
CRENSHAW Facility Type: SITE REMEDIATION PROGRAM		35	621
FIAT-ALLIS CONSTRUCTION MACHIN Facility Type: SITE REMEDIATION PROGRAM	3000 S 6TH ST	42	659

SWF/LF: The Solid Waste Facilities/Landfill Sites records typically contain an inventory of solid waste disposal facilities or landfills in a particular state. The data come from the Illinois Environmental Protection Agency's Available Disposal for Solid Waste in Illinois--Solid Waste Landfills Subject to State Surcharge list.

A review of the SWF/LF list, as provided by EDR, and dated 12/01/2007 has revealed that there are 4 SWF/LF sites within the searched area.

<u>Site</u>	<u>Address</u>	<u>Map ID</u>	<u>Page</u>
LARGE, DEAN	517 RIDGELY	7	74
SPRINGFIELD HOUSING AUTHORITY	200 NORTH 11TH ST	10	233
GRISTY, CLAUDE R.	1514 E. MILLER	16	469
OBBERMAN, SAM B	2401 YALE BOULEVARD	36	622

LF SPECIAL WASTE: These landfills, as of January 1, 1990, accept non-hazardous special waste pursuant to the Illinois EPA Non-Hazardous Special Waste Definition. List A includes landfills that may receive any non-hazardous waste, Non-Regional Pollution Control Facilities are so noted. List B includes landfills designed to receive specific non-hazardous wastes. List B landfills are designated as a Regional Pollution Control Facility by RPCF, or Non-Regional Pollution Control Facility by Non-RPCF.

A review of the LF SPECIAL WASTE list, as provided by EDR, and dated 01/01/1990 has revealed that there is 1 LF SPECIAL WASTE site within the searched area.

<u>Site</u>	<u>Address</u>	<u>Map ID</u>	<u>Page</u>
CIPS #2	607 EAST ADAMS STREET	10	225

EXECUTIVE SUMMARY

LUST: The Leaking Underground Storage Tank Incident Reports contain an inventory of reported leaking underground storage tank incidents. The data come from the Illinois Environmental Protection Agency's LUST Incident Report.

A review of the LUST list, as provided by EDR, and dated 12/11/2009 has revealed that there are 91 LUST sites within the searched area.

<u>Site</u>	<u>Address</u>	<u>Map ID</u>	<u>Page</u>
ILLINOIS DEPT. OF AGRICULTURE NFA/NFR Letter: 1/7/1994	ILLINOIS BLDG. STATE FA	1	3
SOUTHERN PACIFIC TRANSPORTATIO NFA/NFR Letter: 8/7/2002	1700-1800 BLOCK OF WARR	2	3
BURWELL OIL SERVICE NFA/NFR Letter: 3/15/1991	1400 SANGAMON AVE.	3	7
SOUTHERN PACIFIC TRANSPORTATIO NFA/NFR Letter: 7/16/2001	1701 SANGAMON AVE.	3	15
TRUMAN L. FLATT TRUCKING NFA/NFR Letter: 3/3/1998	2300 NORTH 16TH	3	20
ILLINOIS DEPT. OF AGRICULTURE NFA/NFR Letter: 6/8/1999	801 SANGAMON AVE.	4	24
ILLINOIS DEPT. OF AGRICULTURE NFA/NFR Letter: 6/10/1999	801 EAST SANGAMON AVE.	4	24
PROFESSIONAL DEVELOPMENT CO NFA/NFR Letter: 1/20/1994	1545 N 11TH ST	5	27
BYRNE, THOMAS A. NFA/NFR Letter: 8/24/1992	1650 NORTH 14TH	5	46
PRESTON TRUCKING CO INC NFA/NFR Letter: 7/3/1997	1309 RIDGELY AVE	5	53
PRESTON CO.	1309 RIDGELY AVE.	5	54
FJ MURPHY & SON INC. NFA/NFR Letter: 8/24/1994	1800 FACTORY AVE.	5	55
Q & E PROPERTIES, INC. NFA/NFR Letter: 11/24/2009	1200 GRIFFITHS AVENUE	5	60
CHRONISTER OIL COMPANY	2026 REPUBLIC	5	62
ILLICO INDEPENDENT OIL CO.	1129 SOUTH 9TH ST.	10	84
SPRINGFIELD MASS TRANSIT NFA/NFR Letter: 8/3/2004	928 S 9TH ST	10	89
1ST OF AMERICA BANK TRUST #130 AT&T NFA/NFR Letter: 4/3/1995	737 EAST COOK 620 S 5TH ST	10 10	156 159
SUPER MART, INC.	601 SOUTH 9TH STREET	10	177
MASON, FRANK NFA/NFR Letter: 3/30/2004	520 SOUTH NINTH ST.	10	191
BANK 1 TRUST 81-0372-8	525-535 SOUTH 6TH ST.	10	194
AMOCO OIL #8583 NFA/NFR Letter: 6/28/2002	420 SOUTH 9TH STREET	10	199
SPRINGFIELD, CITY OF NFA/NFR Letter: 7/27/2000	MUNICIPAL CENTER WEST,	10	202
BRIDGESTONE FIRESTONE	407 SOUTH 6TH ST.	10	204
SANGAMON COUNTY SHERIFF NFA/NFR Letter: 10/10/1995	9TH / CAPITOL	10	207

EXECUTIVE SUMMARY

<u>Site</u>	<u>Address</u>	<u>Map ID</u>	<u>Page</u>
GENERAL SERVICES ADMIN. NFA/NFR Letter: 4/8/1997	600 EAST MONROE	10	214
BUNN CAPITOL CO. NFA/NFR Letter: 3/30/1994	917 EAST ADAMS ST.	10	218
STATE OF IL CAPITAL DEVELOPMEN NFA/NFR Letter: 4/16/2002	617 EAST JEFFERSON ST.	10	240
UPTOWN INC. NFA/NFR Letter: 1/27/1995	NORTHWEST CORNER 4TH /	10	244
STATE OF IL CAPITAL DEVELOPMEN MARCHAS BLDG. CORP.	300 NORTH 5TH STREET 4TH / MADISON	10	249
1ST NATIONAL BANK NFA/NFR Letter: 8/20/1993	317 NORTH 5TH ST.	10	252
CENTRUM NORTH RADIO THERAPY NFA/NFR Letter: 11/26/1991	401 NORTH 4TH ST.	10	254
ACE SIGN CO. NFA/NFR Letter: 6/26/1995	402 NORTH 4TH	10	254
CITY WATER LIGHT & POWER NFA/NFR Letter: 12/19/1990	10TH / REYNOLDS	10	256
ST. JOHN'S HOSPITAL NFA/NFR Letter: 6/6/2005	930 EAST REYNOLDS	10	262
GOODWILL INDUSTRIES HARPER OIL CO. NFA/NFR Letter: 7/24/2006 NFA/NFR Letter: 7/24/2006	800 NORTH 10TH STREET 1028 NORTH 9TH ST.	10 10	272 280
ILLICO INDEPENDENT OIL CO. HOOKS SUPER X	1102 NORTH 9TH 1160 NORTH 9TH STREET	10 10	292 294
TUXHORN GARAGE NFA/NFR Letter: 6/5/1995	1158 NORTH 6TH	10	294
BRAHLER TIRE MART ED'S AMOCO #5042 NFA/NFR Letter: 5/17/2004	7TH / NORTH GRAND 1201 NORTH 9TH	10 10	297 300
SMITH OIL CO. NFA/NFR Letter: 3/20/2002	1201 NORTH 9TH ST.	10	301
CHICAGO ILLINOIS MIDLAND RAILR NFA/NFR Letter: 10/16/1990	15TH / NORTH GRAND	10	391
COUNTRYSIDE PROPERTIES NFA/NFR Letter: 1/6/1997	2117 NORTH GRAND AVE. E	11	454
TRISTAR MARKETING, INC. FORMER CLARK STATION	1801 NORTH GRAND AVENUE 312 NORTH GRAND	12 13	454 458
CHRONISTER OIL COMPANY HUBBARD MILLING CO. NFA/NFR Letter: 6/7/1996	312 NORTH GRAND AVENUE 426 NORTH 2ND ST.	13 19	459 474
SPRINGFIELD DEPT. OF PUBLIC WO CONCRETE MIXING PLANT NFA/NFR Letter: 3/30/2009	301 NORTH 17TH ST. 1900 EAST MASON	20 20	474 500
SALVATION ARMY GIETL BROTHERS INC. NFA/NFR Letter: 12/12/2005	1000-30 EAST MADISON 101 SOUTH 2ND	21 22	501 504

EXECUTIVE SUMMARY

<u>Site</u>	<u>Address</u>	<u>Map ID</u>	<u>Page</u>
AT&T NFA/NFR Letter: 6/16/1995	1800 EAST ADAMS	23	505
FRANK MASON REAL ESTATE NFA/NFR Letter: 4/3/2000	431 SOUTH 4TH ST.	24	505
SECRETARY OF STATE	2ND / CAPITAL	24	506
MOTOR INN GARAGE NFA/NFR Letter: 8/5/1991	307-309 SOUTH 4TH	24	506
STAAB BATTERY MFG CO INC NFA/NFR Letter: 11/4/1998	931 S ELEVENTH	26	508
HENRY NELCH & SON CO. NFA/NFR Letter: 3/26/1992	1947 SOUTH 10 1/2 ST.	27	545
CAPITAL PLUMBING & HEATING NFA/NFR Letter: 5/5/1998	1900 SOUTH 8TH ST.	27	550
DRIVE IN CAR WASH NFA/NFR Letter: 1/26/2001	1814 SOUTH 6TH ST.	27	553
MINI EXPRESS	900 EAST LAUREL	27	555
SKS VENTURES LLC	900 EAST LAUREL STREET	27	556
CLARK RETAIL ENTERPRISES, INC.	900 EAST LAUREL	27	558
AMOCO, LESS	1700 S 5TH	27	560
BLANKENSHIP, LESTER	1700 SOUTH 5TH ST.	27	563
WARECO SERVICE INC.	900 EAST LAUREL ST.	27	566
HURRICANE FENCE CO. NFA/NFR Letter: 4/5/1991	1000 EAST LAUREL	27	567
AMERICA AMBULANCE SERVICE INC. NFA/NFR Letter: 3/10/1998	1501 SOUTH 5TH ST.	27	582
ANDERSON, PAULINA	1529 SOUTH 9TH ST.	27	583
MOBIL OIL #12LX8 NFA/NFR Letter: 5/9/2005	425 SOUTH GRAND AVE.	27	591
S.S.S. DEVELOPMENT, INC.	426 SOUTH GRAND AVE. EA	27	591
KOVSKI, JOHN M.D.	401 SOUTH GRAND AVE. EA	27	592
1ST NATIONAL BANK NFA/NFR Letter: 10/8/1996	9TH / SOUTH GRAND	27	601
BIG FOOT FOOD STORES NFA/NFR Letter: 2/4/2005 NFA/NFR Letter: 2/4/2005	926 SOUTH GRAND AVE.	27	601
JOHNSON OIL CO. NFA/NFR Letter: 2/4/2005	926 SOUTH GRAND AVE.	27	602
CHARLES T. BISCH & SON INC. NFA/NFR Letter: 2/13/1992	505 EAST ALLEN ST.	27	604
SPRINGFIELD SCHOOL DIST.	15TH / LAUREL	29	608
HOLLAND SPECIALITY	201 WEST LAUREL	30	609
LANCASTER, RAY NFA/NFR Letter: 1/14/2000	1430 EAST ASH	32	610
RATLIFF SHELL STATION NFA/NFR Letter: 6/17/1993 NFA/NFR Letter: 1/8/1991	100 WEST ASH	33	611
ILLINOIS DEPT. OF TRANSPORTATI	126 EAST ASH ST.	33	612
ILLINOIS CMS/DOV NFA/NFR Letter: 10/28/1998	200 EAST ASH ST.	33	618

EXECUTIVE SUMMARY

<u>Site</u>	<u>Address</u>	<u>Map ID</u>	<u>Page</u>
DOCTORS HOSPITAL NFA/NFR Letter: 10/3/1995	5230 SOUTH 6TH ST.	39	639
WAKE, DELBERT NFA/NFR Letter: 3/19/1992	2700 SOUTH 6TH ST.	39	640
ILLINOIS AYERS OIL CO.	430 STANFORD AVE.	39	643
LUBE MASTER NFA/NFR Letter: 3/30/1992	415 E STANFORD	39	646
FIAT-ALLIS CONSTRUCTION MACHIN NFA/NFR Letter: 5/1/1991 NFA/NFR Letter: 5/1/1991	3000 S 6TH ST	42	659
ESTATE OF VEDA L. SMITH	3449 SOUTH MACARTHUR BL	44	678
FIAT-ALLIS NORTH AMERICA INC. NFA/NFR Letter: 5/28/1992	701 STEVENSON DR.	45	679

LUST TRUST: In case sufficient funds are not available in the Underground Storage Tank Fund, requests for payment are entered on the Payment Priority List by "queue date" order. As required by the Environmental Protection Act, the queue date is the date that a complete request for partial or final payment was received by the Agency. The queue date is "officially" confirmed at the end of the payment review process when a Final Decision Letter is sent to the site owner.

A review of the LUST TRUST list, as provided by EDR, and dated 11/03/2009 has revealed that there are 4 LUST TRUST sites within the searched area.

<u>Site</u>	<u>Address</u>	<u>Map ID</u>	<u>Page</u>
SUPER MART, INC.	601 SOUTH 9TH STREET	10	177
FORMER CLARK STATION	312 NORTH GRAND	13	458
CONCRETE MIXING PLANT	1900 EAST MASON	20	500
ILLINOIS AYERS OIL CO.	430 STANFORD AVE.	39	643

UST: The Underground Storage Tank database contains registered USTs. USTs are regulated under Subtitle I of the Resource Conservation and Recovery Act (RCRA). The data come from the Illinois State Fire Marshal's STC Facility List.

A review of the UST list, as provided by EDR, and dated 11/03/2009 has revealed that there are 101 UST sites within the searched area.

<u>Site</u>	<u>Address</u>	<u>Map ID</u>	<u>Page</u>
SPRINGFIELD YARD	1701 S SANGAMON AVE & W	3	4
G B OIL	1400 SANGAMON AVE	3	8
SPRINGFIELD YARD	1701 E SANGAMON	3	16
THORNTONS #370	2208 PEORIA ROAD	3	18
TRUMAN L FLATT & SONS COINC	2300 N 16	3	23
SIU SCHOOL OF MEDICINE WAREHOU	1545 N 11TH ST	5	26
A B C SUPPLY CO	1650 N 14TH	5	46
PRESTON TRUCKING CO INC	1309 RIDGELY AVE	5	53
JF COADY CO INC	1301 PLUTO AVE	5	56
F J MURPHY & SON INC	1800 FACTORY AVE REAR	5	56
EXPRESS FOOD MART #3	1900 PEORIA ROAD	5	57
OLD STATION	1921 PEORIA RD	5	59

EXECUTIVE SUMMARY

<u>Site</u>	<u>Address</u>	<u>Map ID</u>	<u>Page</u>
Q & E PROPERTIES, INC.	1200 GRIFFITHS AVE.	5	61
LINCOLN LAND OIL COMPANY	2026 REPUBLIC PO BOX 43	5	64
DUNCAN OIL CO	1900 GRIFFITH ST	6	74
ILLICO STATION 124	1129 SOUTH 9TH STREET	10	81
SENTINEL PEST CONTROL	1001 S 9TH ST	10	88
SPRINGFIELD MASS TRANSIT DIST.	928 S. 9TH STREET	10	92
GEORGE ALARM COMPANY, INC.	917 SOUTH 9TH	10	95
HENRY NELCH & SON CO	800 S 9TH ST	10	99
FRANKLIN LIFE INS CO	800 S 7TH ST	10	147
CATHEDRAL OF THE IMMACULATE CO	524 EAST LAWRENCE AVE.	10	149
TOWNHOUSE CONDOMINIUMS	718 S 7TH ST	10	149
JACK STOLDT AUTO SERVICE INC	717 S 5TH	10	150
SUPER MART	901 EAST COOK STREET	10	152
AUDIO EXPRESS INC	901 E COOK	10	154
FIRST OF AMERICAN TRUST 130595	737 E COOK	10	154
AT&T SPRINGFIELD - 044350 (IL4	620 S. 5TH STREET	10	161
SUPER MART, INC.	601 SOUTH 9TH STREET	10	175
SPRINGFIELD MAIN ESS	601 SOUTH 6TH STREET	10	182
VACANT PROPERTY	520 S. 9TH STREET	10	190
BANK ONE SPFLD	525-535 S 6TH ST	10	191
AMOCO SS #8583	420 SOUTH 9TH ST. 9TH &	10	200
FIRESTONE MASTER CARE CENTER	407 S 6 ST	10	204
LINCOLN LIBRARY	7TH & CAPITAL	10	207
VAN PICKERILL & SONSINC	1001 E MONROE	10	208
OLD SANGAMON CO BLDG SITE	800 E MONROE	10	209
MUNICIPAL CENTER WEST SPFLD. C	300 SOUTH 7TH STREET	10	211
PAUL FINDLEY FED BLDG	600 E MONROE	10	213
OXTOBY PROPERTIES	220-230 S 6TH ST	10	218
BUNN CAPITAL CO BANK 1 DATA CT	917 E ADAMS ST	10	219
PHILLIPS 66 CO #020867	201 S 9TH ST	10	219
SANGAMON CO. COURT & DETENTION	200 S. 9TH STREET, ROOM	10	221
FIRST OF AMERICAN BANK SPRINGF	ONE NORTH OLD STATE CAP	10	230
SPRINGFIELD IL POLICE DEPT	617 E JEFFERSON ST	10	239
SALVATION ARMY	1000-30 E MADISON ST	10	248
ABRAHAM LINCOLN PARKING GARAGE	300 N. 5TH STREET	10	250
VACANT PARKING LOT	5TH ST & EAST MADISON	10	250
FIRST NAT BK OF SPRINGFIELD	317 N 5TH ST RELLERT TR	10	252
PRAIRIE HEART INSTITUTE	619 EAST MASON	10	253
ST JOHN'S PAVILLION	701 E MASON	10	255
ELLINGER KUNZ & DAVIS INC	437 N 6TH ST	10	255
REYNOLDS STREET SUBSTATION	11TH & REYNOLDS	10	258
CWLP GARAGE	10TH & REYNOLDS	10	260
VACANT LOT	930 E. REYNOLDS STREET	10	261
CITGO	600 N. 9TH STREET 9TH A	10	264
ST. JOHN'S HOSPITAL	800 E. CARPENTER	10	267
GOODWILL	800 N. 10TH STREET	10	272
HARPER OIL CO #18	1028 N. 9TH STREET	10	281
ILLICO, INC.	1102 NORTH 9TH STREET	10	290
REVEREND HILDEBRANDT APTS	1151 N 8TH ST	10	292
TUXHORN GARAGE	1158 N 6TH ST	10	295
WOLFF CURT	700 N GRAND E	10	295
SUNSHINE FOODS #759	1201 N. 9TH ST.	10	298
CHICAGO & IL MIDLAND RAILWAY C	15TH & NORTH GRAND AVEN	10	389
LEE S DELUXE CLEANERS	1221 N 8TH ST	10	448
SUPER PANTRY #31	1801 NORTH GRAND EAST	12	455
PILLSBURY CO	1525 E PHILLIPS	15	462

EXECUTIVE SUMMARY

<u>Site</u>	<u>Address</u>	<u>Map ID</u>	<u>Page</u>
MAJOR BYRD APTS	125 N 13TH ST	21	501
SPRINGFIELD FIRE DEPT. SHOP	1310 EAST JEFFERSON	21	502
STAAB BATTERY MFG CO INC	931 S 11TH STREET	26	510
GLASS SPECIALTY CO INC	829 S 11TH ST	26	511
DR. ROBERT RUSSELL	2160 S. 9TH STREET	27	517
PARIS FABRICARE SPECIALIST INC	1013 E ASH	27	525
IL AYERS OIL CO	11TH & ASH ST	27	542
HENRY NELCH & SON CO	1947 S 10 1 2 ST	27	545
CAPITOL GROUP	1900 S 8TH ST	27	549
GC DRIVE IN CAR WASH INC	1814 S 6TH ST	27	552
BRAHLER TIRE MART INC	531 E LAUREL	27	554
MINI EXPRESS, INC.	900 EAST LAUREL STREET	27	557
LES' AMOCO, INC.	1700 S. 5TH STREET	27	564
HURRICANE FENCE CO INC	1000 E LAUREL	27	567
BRAHLER LUBE CENTER	1701 S 6TH	27	580
AMERICA AMBULANCE SER INC	1501 S 5TH ST	27	583
MIDAS MUFFLER SHOP	1529 S 9TH ST	27	584
LINCOLN MOTO MART	610 S. GRAND AVENUE EAS	27	589
EVANS-MASON INC	1021 S GRAND E	27	603
ORPHAN TANK	610 E VINE	27	603
CHARLES T BISCH & SONS INC	505 E ALLEN	27	604
ILES ELEMENTARY SCHOOL	1700 S 15TH ST	29	609
RAYS CHILLI	1920 S 13TH ST	31	610
IL DEPT OF TRANSPORTATION	126 E ASH ST	33	611
STATE OF ILLINOIS, CMS VEHICLE	200 E. ASH STREET	33	619
POOL CENTER, INC.	2160 S. 6TH STREET	34	620
SEARS #9660	2548 S 1ST ST	37	625
R&M AUTO SUPPLY	2717 S 6TH ST	39	637
LINCOLN PRAIRIE BEHAVIORAL HEA	5230 S. 6TH STREET	39	638
WAKE DELBERT G	2700 S 6TH ST	39	639
AYERCO CONVENIENCE CENTER #14	430 STANFORD AVENUE	39	640
LUBE MASTER	415 E STANFORD	39	645
FURROWS BLDG MATERIALS	2644 S 6	39	648

SPILLS: A listing of incidents reported to the Office of Emergency Response.

A review of the SPILLS list, as provided by EDR, and dated 10/19/2009 has revealed that there are 3 SPILLS sites within the searched area.

<u>Site</u>	<u>Address</u>	<u>Map ID</u>	<u>Page</u>
Not reported	601 S 9TH ST	10	176
Not reported	930 E REYNOLDS	10	261
Not reported	900 E LAUREL ST	27	557

EXECUTIVE SUMMARY

ENG CONTROLS: Sites with Engineering Controls.

A review of the ENG CONTROLS list, as provided by EDR, and dated 10/27/2009 has revealed that there are 4 ENG CONTROLS sites within the searched area.

<u>Site</u>	<u>Address</u>	<u>Map ID</u>	<u>Page</u>
<i>KYANIZE PAINTS, INC.</i>	<i>1616 NORTH 14TH STREET</i>	<i>5</i>	<i>39</i>
<i>HONEYWELL HOBBS CORPORATION</i>	<i>1034 EAST ASH STREET</i>	<i>27</i>	<i>532</i>
<i>CVS PHARMACY</i>	<i>611 SOUTH GRAND AVENUE</i>	<i>27</i>	<i>594</i>
<i>KERASOTES CORPORATION OFFICES</i>	<i>755 APPLE ORCHARD ROAD</i>	<i>42</i>	<i>675</i>

INST CONTROL: Legal or administrative restrictions on land use and/or other activities (e.g., groundwater use restrictions) which effectively limit exposure to contamination may be employed as alternatives to removal or treatment of contamination.

A review of the INST CONTROL list, as provided by EDR, and dated 10/27/2009 has revealed that there are 7 INST CONTROL sites within the searched area.

<u>Site</u>	<u>Address</u>	<u>Map ID</u>	<u>Page</u>
<i>KYANIZE PAINTS, INC.</i>	<i>1616 NORTH 14TH STREET</i>	<i>5</i>	<i>39</i>
<i>SPRINGFIELD CREDIT UNION</i>	<i>825 EAST CARPENTER STRE</i>	<i>10</i>	<i>265</i>
<i>LEES DELUXE CLEANERS</i>	<i>1221 N 8TH ST</i>	<i>10</i>	<i>443</i>
<i>HONEYWELL HOBBS CORPORATION</i>	<i>1034 EAST ASH STREET</i>	<i>27</i>	<i>532</i>
<i>CVS PHARMACY</i>	<i>611 SOUTH GRAND AVENUE</i>	<i>27</i>	<i>594</i>
<i>FIAT-ALLIS CONSTRUCTION MACHIN</i>	<i>3000 S 6TH ST</i>	<i>42</i>	<i>659</i>
<i>KERASOTES CORPORATION OFFICES</i>	<i>755 APPLE ORCHARD ROAD</i>	<i>42</i>	<i>675</i>

SRP: Illinois Environmental Protection Agency, Site Remediation Program Database

A review of the SRP list, as provided by EDR, and dated 10/27/2009 has revealed that there are 12 SRP sites within the searched area.

<u>Site</u>	<u>Address</u>	<u>Map ID</u>	<u>Page</u>
<i>PROFESSIONAL DEVELOPMENT CORP.</i>	<i>1545 NORTH 11TH STREET</i>	<i>5</i>	<i>26</i>
<i>KYANIZE PAINTS, INC.</i>	<i>1616 NORTH 14TH STREET</i>	<i>5</i>	<i>39</i>
<i>TRAFFIC ENGINEERING SIGN SHOP</i>	<i>601 EAST JEFFERSON STRE</i>	<i>10</i>	<i>240</i>
<i>SPRINGFIELD CREDIT UNION</i>	<i>825 EAST CARPENTER STRE</i>	<i>10</i>	<i>265</i>
<i>CHICAGO & ILLINOIS MIDLAND RR</i>	<i>15TH / NORTH GRAND AV</i>	<i>10</i>	<i>386</i>
<i>LEES DELUXE CLEANERS</i>	<i>1221 N 8TH ST</i>	<i>10</i>	<i>443</i>
<i>HONEYWELL HOBBS CORPORATION</i>	<i>1034 EAST ASH STREET</i>	<i>27</i>	<i>532</i>
<i>CVS PHARMACY</i>	<i>611 SOUTH GRAND AVENUE</i>	<i>27</i>	<i>594</i>
<i>PATTERSON BROTHERS</i>	<i>801 SOUTH GRAND AVENUE</i>	<i>27</i>	<i>597</i>
<i>CRENSHAW</i>		<i>35</i>	<i>621</i>
<i>FIAT-ALLIS CONSTRUCTION MACHIN</i>	<i>3000 S 6TH ST</i>	<i>42</i>	<i>659</i>
<i>KERASOTES CORPORATION OFFICES</i>	<i>755 APPLE ORCHARD ROAD</i>	<i>42</i>	<i>675</i>

EXECUTIVE SUMMARY

DRYCLEANERS: Any business interested in operating a drycleaning facility in Illinois needs to apply for a license through the Illinois Drycleaner Environmental Response trust Fund.

A review of the DRYCLEANERS list, as provided by EDR, and dated 12/01/2009 has revealed that there are 2 DRYCLEANERS sites within the searched area.

<u>Site</u>	<u>Address</u>	<u>Map ID</u>	<u>Page</u>
ONE DAY CLEANERS	816 NORTH 9TH STREET	10	276
PARIS FABRICARE SPECIALISTS IN	1013 EAST ASH	27	525

CDL: A listing of clandestine/meth drug lab locations.

A review of the CDL list, as provided by EDR, and dated 10/22/2009 has revealed that there are 4 CDL sites within the searched area.

<u>Site</u>	<u>Address</u>	<u>Map ID</u>	<u>Page</u>
Not reported	1611 NORTH 10TH STREET	5	33
Not reported	1426 EAST RESERVOIR	10	293
Not reported	1330 NORTH GRAND AVE. E	10	386
Not reported	1335 N. 9TH STREET	10	450

AIRS: A listing of air permits and emissions information.

A review of the AIRS list, as provided by EDR, and dated 12/31/2008 has revealed that there are 18 AIRS sites within the searched area.

<u>Site</u>	<u>Address</u>	<u>Map ID</u>	<u>Page</u>
<i>TURRIS COAL CO</i>	<i>1701 E SANGAMON</i>	<i>3</i>	<i>15</i>
<i>CHICAGO MISSOURI AND WESTERN R</i>	<i>1701 E SANGAMON AVE</i>	<i>3</i>	<i>17</i>
<i>OKP INC</i>	<i>1616 N 14TH ST</i>	<i>5</i>	<i>40</i>
<i>HENRY NELCH & SON CO INC</i>	<i>800 S 9TH ST</i>	<i>10</i>	<i>99</i>
<i>CAPITOL WOOD WORKS</i>	<i>1010 E EDWARDS</i>	<i>10</i>	<i>164</i>
<i>PHILLIPS BROS INC</i>	<i>831 E ADAMS</i>	<i>10</i>	<i>222</i>
<i>LINCOLN SCHOOL</i>	<i>300 S 11TH ST</i>	<i>10</i>	<i>248</i>
ONE DAY CLEANERS	816 N NINTH ST	10	276
<i>HARPER OIL CO</i>	<i>1028 N 9TH ST</i>	<i>10</i>	<i>284</i>
<i>BP PRODUCTS NORTH AMERICA INC</i>	<i>1201 N 9TH</i>	<i>10</i>	<i>302</i>
<i>SANGAMO ELECTRIC CO</i>	<i>1301 N 11TH ST</i>	<i>10</i>	<i>382</i>
EDISON MIDDLE SCHOOL - DIST. 1	1300 N 11TH ST	10	383
<i>LANPHIER HIGH SCHOOL - DIST 18</i>	<i>1300 N 11TH ST</i>	<i>10</i>	<i>383</i>
C&IM RR	15TH / NORTH GRAND AV	10	392
LEE'S DELUXE CLEANERS	1221 N 8TH ST	10	443
<i>EISNER FOOD STORE 42</i>	<i>740 E ASH</i>	<i>27</i>	<i>523</i>
<i>PARIS CLEANERS-FURRIERS INC</i>	<i>1013 E ASH ST</i>	<i>27</i>	<i>526</i>
WARE OIL CO	900 E LAUREL	27	556

EXECUTIVE SUMMARY

EDR PROPRIETARY RECORDS

Manufactured Gas Plants: The EDR Proprietary Manufactured Gas Plant Database includes records of coal gas plants (manufactured gas plants) compiled by EDR's researchers. Manufactured gas sites were used in the United States from the 1800's to 1950's to produce a gas that could be distributed and used as fuel. These plants used whale oil, rosin, coal, or a mixture of coal, oil, and water that also produced a significant amount of waste. Many of the byproducts of the gas production, such as coal tar (oily waste containing volatile and non-volatile chemicals), sludges, oils and other compounds are potentially hazardous to human health and the environment. The byproduct from this process was frequently disposed of directly at the plant site and can remain or spread slowly, serving as a continuous source of soil and groundwater contamination.

A review of the Manufactured Gas Plants list, as provided by EDR, has revealed that there are 5 Manufactured Gas Plants sites within the searched area.

<u>Site</u>	<u>Address</u>	<u>Map ID</u>	<u>Page</u>
SANGAMO ELECTRIC CO	823 N GRAND AVE E	10	298
FIRST AND ADAMS	NE AND NW CORNERS 1ST A	22	504
FIRST & ADAMS	NE & NW CORNERS 1ST & A	22	504
FIRST & ADAMS	NE & NW CORNERS 1ST & A	22	504
AMEREN CILCO MGO #2	100 W WASHINGTON STREET	22	505

Appendix C
Newsletters



The study to determine how best to accommodate increasing freight and passenger rail traffic through Springfield.

CONTENTS

- Railroad corridor study Environmental Impact Statement . . pg 2
- Current and Future Rail Conditions . pg 3
- Open house to take place on April 20 pg 4

For more information

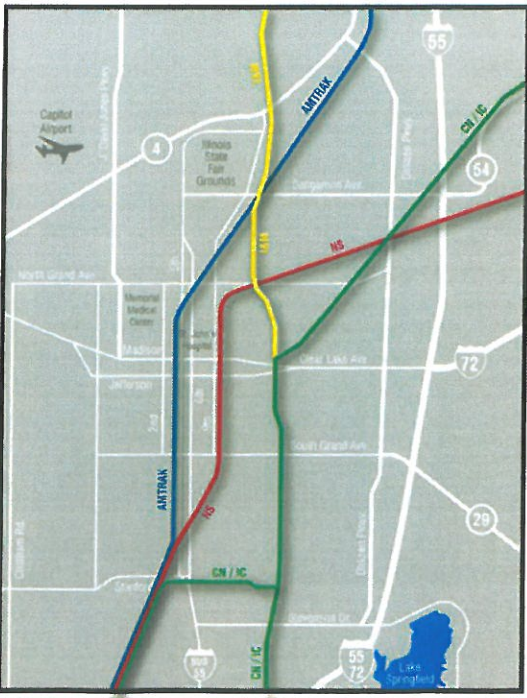
www.springfieldrailroad.com
info@springfieldrailroad.com
 1-877-552-5505

Follow us on Facebook:

Go to www.springfieldrailroad.com and click on the facebook icon. 

Study Map

The limits of the study are Stanford Avenue on the south and Sangamon Avenue on the north.



New study looks at feasible options for managing rail traffic through Springfield

Springfield is a city that grew up around its rail lines and was, at one time, an important railroad junction. Almost all of the people and goods coming into and out of the City were carried by rail. The situation at the beginning of the Twenty-first Century is vastly different. The City has significantly fewer rail lines; people arrive mostly by car or plane; and almost all of the products sold or used in Springfield move by truck.

A vestige of Springfield’s rail-centric past is that there are currently three north-south railroad corridors that run through the City. Generally speaking, these corridors are Third Street, Tenth Street and Nineteenth Street. All of these corridors create physical and psychological barriers in the neighborhoods they divide. Roadway-railroad at-grade crossings are, by definition, hazardous intersections. There are currently 73 at-grade crossings in the study area, which create traffic congestion and safety issues when they are blocked by trains.

In the next 10 years, railroad traffic through the City of Springfield could more than double.

This means more traffic delays where the rail lines cross local streets, increased safety risks, and more noise and vibration along the rail corridors. For some areas, it could mean disturbances to residential life as well as to business operations and productivity.

The increase in rail traffic is due in part because Union Pacific Railroad plans to construct a new intermodal rail yard near Joliet. If Union Pacific’s business grows as the company hopes, there will eventually be up to 22 freight trains on its Third Street line each day. Additionally, the Illinois Department of Transportation (IDOT) has applied for federal funding to construct a high speed (110 mph) rail line from Chicago to St. Louis that will pass through Springfield, also on the Third Street track. The combination of these 18 passenger trains with Union Pacific’s freight trains will require a second track on Third Street to accommodate a total of 40 trains per day.

The City of Springfield and Sangamon County are conducting

continues on pg 3

Study Team

Hanson Professional Services Inc. is leading the Springfield Railroad Corridor Study. It is responsible for developing and assessing different alternatives that can best address increasing freight and passenger rail traffic through Springfield. Hanson and its study team members have the necessary professional qualifications and certifications to prepare an Environmental Impact Statement, which is what this railroad corridor study likely requires.

Hanson has retained **Vector Communications Corporation**, a public engagement and communications consulting firm, to lead the study's community involvement and outreach efforts. Vector will help ensure that there are open lines of communication between the study team and the public so that residents, business owners and elected officials can give their input throughout the study.

Other members of the study team are listed below:

Springfield-Sangamon County Regional Planning Commission is performing traffic analysis.

Campbell Technology Corporation is conducting train crossing safety studies.

RDG Planning and Design is preparing corridor redevelopment analysis.

Harris Miller Miller & Hanson Inc. is conducting noise and vibration analyses.

Fever River Research is completing historic structure and archaeological studies.

Railroad study is Environmental Impact Statement, follows detailed federal guidelines

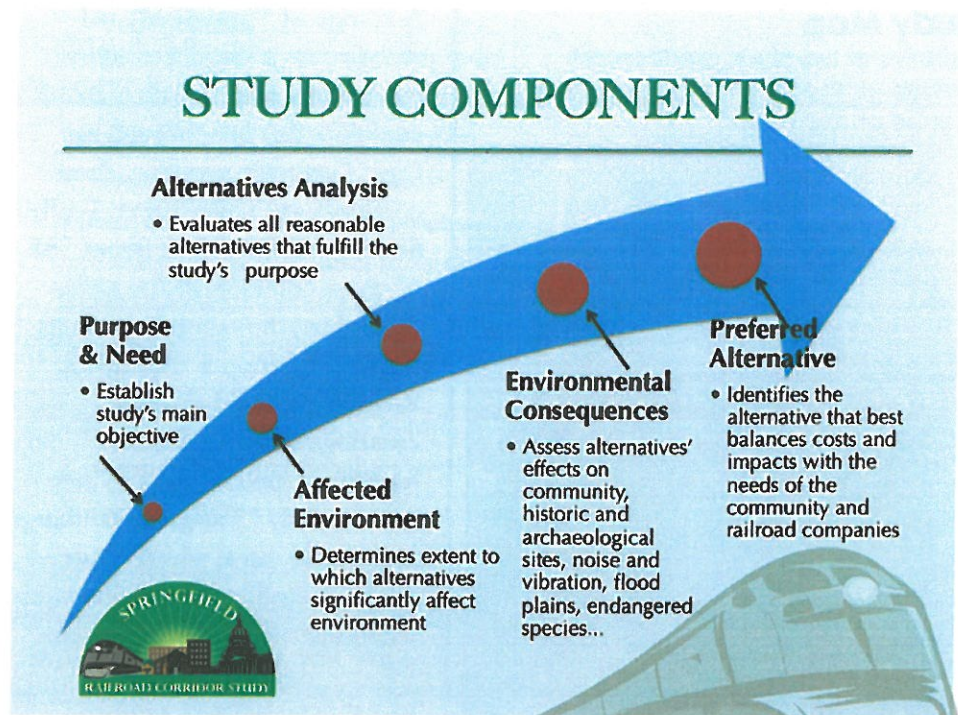
The Springfield Railroad Corridor Study is distinct from previous railroad studies in that it is an Environmental Impact Statement or EIS. As part of the EIS, the study team will evaluate reasonable alternatives that meet the project's purpose and need for accommodating increasing rail traffic through Springfield.

The study will assess the costs, benefits and environmental impacts of each of the final study alternatives to determine which one is most reasonable. The final result will be the recommendation of a preferred alternative that respects the environment; considers public safety and mobility; and complements community goals and plans.

This recommendation will be presented as an EIS, which includes the environmental documentation,

and an engineering report. It will be submitted to the Federal Railroad Administration (FRA), the lead federal agency for the study. The FRA will determine which alternative gets selected and built. However, even though the FRA will select the alternative that should be built, it cannot force the railroads to relocate their train traffic to different tracks if they do not choose to do so.

The entire study is guided by protocols established under the National Environmental Policy Act (NEPA). These protocols require the study to have five primary components: purpose and need, affected environment, alternatives analysis, environmental consequences and preferred alternative. A brief description of each is provided below.



Current and future rail traffic conditions

The anticipated increases in freight and passenger rail traffic in the next 10 years could mean an increase of approximately 35-40 trains a day passing through Springfield. The chart

titled Train Traffic, below, shows the current and projected rail traffic along the Union Pacific (3rd Street), Norfolk Southern (10th Street), and Canadian National (19th Street) corridors.

Train Traffic*

Railroads	Current 2010 Traffic	Projected 2020 Traffic
Union Pacific (3rd Street Corridor)	10 Passenger 5 Freight	18 Passenger 22 Freight
Norfolk Southern (10th Street Corridor)	16 Freight	24 Freight
Canadian National (19th Street Corridor)	4 Freight	8 Freight
TOTAL	35 Trains	72 Trains

* Rail traffic can vary on a daily and seasonal basis.

With the increase in rail traffic, comes a significant increase in the amount of time vehicles are delayed at train crossings. Currently, vehicles spend 13,800 minutes per day, or 230 hours, delayed at railroad crossings in Springfield. With the projected increases in train traffic, vehicles will likely spend 36,000 minutes delayed at rail crossings. This could mean that in 2020, vehicles would spend almost 600 hours per day waiting at railroad crossings; almost triple the current delay.



New study looks at a all feasible options

from pg 1

the new Springfield Railroad Corridor Study to determine how best to manage the city's growing freight and passenger rail traffic. The study, which is being funded by IDOT, will evaluate the possible environmental, social and economic impacts of different alternatives for accommodating the traffic. Alternatives found to be feasible and prudent will have their benefits and costs analyzed and shared with the public. The public will have an opportunity to identify its preferences, which will be considered by the study team as it works to select a preferred alternative. At a minimum, the team has agreed to study the following two alternatives:

- *Double track Third Street, or*
- *Move the Third Street and possibly the Nineteenth Street trains to Tenth Street and consolidate all of the rail traffic into one corridor.*

Locating all of the trains along the Tenth Street corridor would require a total of three to five tracks to handle the increased rail traffic. The team will also consider other feasible alternatives.

At the study's conclusion, a preferred alternative that balances costs and impacts with the needs of the community and railroad companies, will be recommended. This alternative

will be described in detail in an engineering report and an environmental document. If the alternative is approved by the Federal Railroad Administration (FRA), the City will be in a position to apply for funding to finance the alternative's final design and land acquisition.

The study should be completed by mid 2011. Although it is focused on the area between Stanford Avenue (on the south) and Sangamon Avenue (on the north), anyone who is interested in or impacted by its activities is encouraged to get involved. An extensive public involvement program is offering numerous opportunities for citizens to provide their input and stay informed.



Springfield Railroad Corridor Study
c/o Vector Communications
701 N. 15th Street
Mailbox 43
St. Louis, MO 63103

April 20th Open House great opportunity to learn more and share your thoughts

From 4:00 p.m. until 7:00 p.m. on Tuesday, April 20, 2010 at the Prairie Capital Convention Center, interested citizens and business people will be able to meet the study team to learn about the study's activities and findings to date. Although there will be no formal presentation, various stations will be staffed by team members who will share information on the study's environmental efforts, traffic studies, public safety data, noise

and vibration analyses, corridor redevelopment ideas, and historic structure assessments. In addition, the open house will have a station dedicated to public feedback where team members will ask participants about their rail traffic concerns, desired corridor or neighborhood improvements, and community values. Those who attend will also be encouraged to complete a comment form about their open house experience.

Please come out to get involved and give the study team your input. You may come anytime during the three-hour period. All are welcome.

Tuesday, April 20
4:00 p.m. - 7:00 p.m.

Come anytime, there is no formal presentation

**Prairie Capital
Convention Center ***
1 Convention Center Plaza
Springfield, IL 62701

**This facility is
ADA accessible.*

Unable to attend the open house? Participate in a **webinar** - a facilitated presentation via the Internet. By participating in the webinar, you will have an opportunity to view the information that was presented at the open house as well as to ask questions of the study team. **Visit the website to register for the webinar** - www.springfieldrailroad.com.



The study to determine how best to accommodate increasing freight and passenger rail traffic through Springfield.

CONTENTS

Preliminary Alternatives pg 1

Public Engagement Update pg 1

Environmental Field Studies Update pg 3

Agency Status pg 4

For more information

www.springfieldrailroad.com
info@springfieldrailroad.com
 1-877-552-5505

Follow us on Facebook:

Go to www.springfieldrailroad.com and click on the Facebook icon. 

Preliminary Alternatives

The Springfield Railroad Corridor Study Team has reviewed the input received from the initial public engagement activities and has been developing and refining various alternatives. Study alternatives include the double-tracking of Third Street, moving the Third Street tracks to Tenth Street, moving the Third and Nineteenth Street tracks to Tenth Street, and moving freight rail traffic out of the City.

These general alternatives have been further refined by adding grade separations and street closures at various cross streets, and possibly adding quiet zones. Quiet zones are areas that trains can pass through without the use of their horns. The Study Team is assessing the impacts of these alternatives, including residential and commercial displacements, new right-of-way needs, environmental impacts and costs.

Public Engagement Update

Community Presentations

During the first half of this year, the Study Team made 30 presentations to advisory, neighborhood, civic and business groups across the Springfield community. Working together, the team's technical experts and public engagement specialists have used the presentations to explain the study's purpose, process, activities and findings to interested citizens and community stakeholders. More than 1,000 citizens have attended these presentations, where they have learned about the implications of Springfield's increasing freight and passenger rail traffic. Reaching such a large

number of people would not have been possible without the support and assistance of the presentations' hosts.

To view a full list of the organizations that hosted the presentations, please visit the study website, www.springfieldrailroad.com, and click on Study Presentations and Meetings.

If you would like the Study Team to present to your organization or group, email us at info@springfieldrailroad.com or call us at 1-877-552-5505.



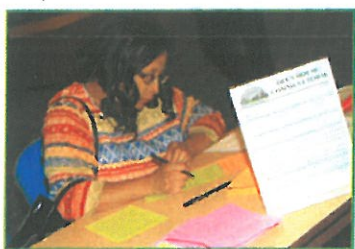
The study's first open house, held in April, was attended by almost 300 people.

Public Open House

The first Springfield Railroad Corridor Study open house was held on Tuesday, April 20, 2010 from 4:00 p.m. to 7:00 p.m. at the Prairie Capital Convention Center. More than 290 people attended the public meeting: 1) to learn about the study's purpose and need, technical activities, engagement process, and deliverables; and 2) to share their community values, concerns and desires with the Study Team. As the first of three public meetings, the April open house provided a comprehensive introduction to the study's components, including environmental analysis, rail safety, traffic studies, noise and vibration, corridor redevelopment, historic structures and public engagement. Team members working in each of these areas met with attendees in small groups and responded to their questions and comments.

Comment Form Results

To capture public input in a more formal way, the Study Team asked attendees to complete a comment form and to visit a public input station where they could post their



A citizen completes a comment form.

thoughts about the study for all to see. A total of 108 comment forms were completed. Respondents, 86% of whom were city residents, indicated that they found the open house to be well planned

and worth their time. In addition, they characterized the study team as informative, helpful and prepared.

On the comment form's two open-ended questions, respondents were able to share a wider range of perspectives and opinions. **The first question asked what would make the study a success.** Ninety-one people answered this question and gave 21 different types of responses. Those that received the greatest support (in order of preference, with the last two bullets tied) included:

- Routing Springfield's rail (freight) traffic out of town,
- Having the study be conducted in a fair and neutral manner,
- Keeping the community informed of the study's activities and findings, and
- Locating rail traffic along the city's eastern corridors.

The second open-ended query simply asked for any additional comments or questions. Fifty-four people wrote their thoughts, generating 19 different types of responses. Those that received the most support (in order of preference, with the last three bullets tied) included:

- Concern about negative noise and vibration impacts,
- Appreciation for the study team's efforts to involve the community,
- Suggestions for keeping the public informed about the study,
- A desire to move rail (freight) traffic out of town, and
- Concern about the effects of increased rail traffic on public safety.

Public Input Station Findings

Many open house attendees not only completed comment forms, but also visited the public input station to answer questions about their study concerns, desires and values. Because some participants had strong affiliations with the Third Street, Tenth Street or Nineteenth Street railroad corridors, they were encouraged to direct their responses to the corridors they cared about most. They were also given an option of answering more broadly, which



Attendees answer public input questions at open house station.

involved providing responses that focused on the city as a whole. Presented on the following page are the responses to the three questions that were most cited. Responses by corridor can be viewed on the study's website.

Continued on pg 3

The Study Team received 186 responses to the first question posed at the public input station, which was, **“What concerns do you have about increasing rail traffic near where you live, work and play?”** Answers fell into 15 comment categories, with the top five categories of concern (in order of priority) focusing on:

- Compromised public safety,
- Damaging noise and vibration impacts,
- Traffic delays,
- Negative effects on the local economy, and
- Increased neighborhood division and destruction.



Participants view public comments.

The second question asked people to articulate their desires for railroad corridor and neighborhood improvement. A total of 200 responses were put forth and subsequently clustered into 16 different categories. The top four improvement desires (in order of priority) were:

- Spur economic development,
- Route train (freight) traffic outside of town,
- Increase green space and recreation options along the impacted corridors / neighborhoods, and
- Improve traffic flow.

The last question asked concerned the values attendees thought should inform the Study Team’s decision making on how best to accommodate Springfield’s increasing rail traffic. Respondents posted 171 comments, which revealed 22 different values. The values thought to be most important (in order of priority) were:

- Doing what is best for the local economy,
- Promoting public safety,
- Protecting and enhancing neighborhoods, and
- Improving traffic flow.

To view the open house meeting results and public input in greater detail, visit the study’s website at www.springfieldrailroad.com and click the Public Meetings /Open Houses link.

Continued on pg 4

Environmental Field Studies Update

Noise & Vibration Studies

The Study Team collected noise and vibration measurements along the study corridors in April. Over the past few months, this information has been downloaded into computer models that will be used to determine the projected noise and vibration impacts to nearby residences and commercial businesses. If these impacts are too great, noise reducing barriers and vibration dampening techniques may be warranted.

Historic Structures

One of our local Study Team members, Fever River Research, is completing the historic structure and archaeological documentation within the study area and is beginning to assemble its final report. This document will be used to identify protected structures and sites for avoidance purposes during our alternatives development.

Threatened & Endangered Species

Members of the Friends of Sangamon Valley contacted the Study Team earlier this spring about the possible presence of the state-threatened Franklin’s Ground Squirrel within the study area. Biologists from Hanson recently assisted the Friends of Sangamon Valley in their ongoing research and study of the ground squirrel. The Team learned about the preferred habitat of the ground squirrel in the Springfield area and even trapped a couple of ground squirrels for identification purposes. Hanson is currently surveying the study corridors for any preferred habitat that ground squirrels may be using for their colonies. The ground squirrels are one of the longest hibernating mammals and typically begin their hibernation towards the end of August and remain asleep until late April.



Franklin’s Ground Squirrel can be found in Springfield.



Springfield Railroad Corridor Study
c/o Vector Communications
701 N. 15th Street
Mailbox 43
St. Louis, MO 63103

Public Engagement Update continued from pg 3

Public Information Kiosks

The Study Team has four information kiosks that travel around the city providing information and background materials on the study. These unmanned exhibits are displayed at libraries, local shopping malls, area businesses, community churches and other places with high pedestrian traffic. To date, the kiosks have moved to eight different locations and helped to disseminate a variety of materials including project fact sheets, open house letters and study newsletters.



One kiosk was located at the Prairie Capital Convention Center.

If your group or organization would like to host a kiosk for one month, please contact the Study Team at 1-877-552-5505 or email us at info@springfieldrailroad.com.

Agency Involvement Update

We have received information that the Federal Railroad Administration and the Illinois Department of Transportation are engaged in the Springfield Railroad Corridor Study. The Study Team will provide these agencies with the information and alternatives that have been developed to date. We plan to schedule the next Public Open House upon their review of this information.



The study to determine how best to accommodate increasing freight and passenger rail traffic through Springfield.

Open House

**Tuesday,
November 16**

4:00 p.m. - 7:00 p.m.

**Prairie Capital
Convention Center**
1 Convention
Center Plaza
Springfield, IL 62701

For more information:
www.springfieldrailroad.com
Info@springfieldrailroad.com
1-877-552-5505

Second open house to present corridor alternatives for public input

The Springfield Railroad Corridor Study Team has spent the summer developing and analyzing preliminary alternatives that would address the city's increasing freight and passenger rail traffic, which is likely to double in the next 10 years. The study team, led by Hanson Professional Services Inc., has been charged with the task of assessing the environmental, social and economic impacts of various alternatives in order to recommend one alternative to the Federal Railroad Administration.

The alternatives being considered will be presented at an open house, **Tuesday, November 16**, from **4:00 – 7:00 p.m.** at the **Prairie Capital Convention Center**. There will not be a formal presentation. Attendees can come any time between the hours listed. This facility is ADA accessible.

The alternatives, in addition to meeting the study's purpose of accommodating

increasing rail traffic through Springfield, are also being analyzed according to the following factors:

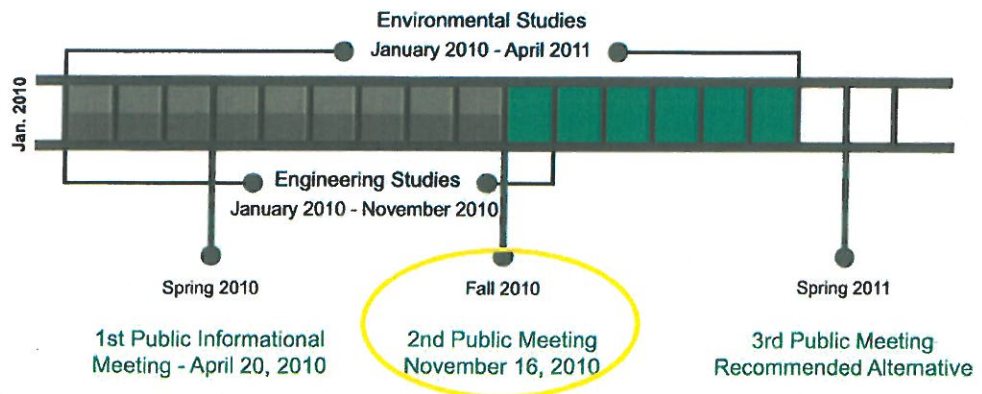
- Railroad companies' input
- Resource agency input
- Public input
- Environmental impacts
- Safety
- Traffic delay
- Cost

The recommended alternative must balance costs and impacts with the needs of the community and the railroad companies.

The November 16th open house is the prime opportunity for citizens to share their thoughts on the study alternatives. Attendees will have an opportunity to identify their preferences, which will be considered by the study team as it works to select a recommended alternative.

Project Schedule

(As of September 2010)





Springfield Railroad Corridor Study
c/o Vector Communications
701 N. 15th Street
Mailbox 43
St. Louis, MO 63103

NEXT OPEN HOUSE

**View preliminary
alternatives
and give your input!**

Tuesday, November 16

4:00 p.m. - 7:00 p.m.

Come anytime, there is no formal presentation

Prairie Capital Convention Center *

1 Convention Center Plaza
Springfield, IL 62701

**This facility is ADA accessible.*