

EXPERIENCE IT YOURSELF.



# ILLINOIS HIGH-SPEED RAIL

CHICAGO TO ST. LOUIS



[www.idohtsr.org](http://www.idohtsr.org)  
[www.connectthemidwest.com](http://www.connectthemidwest.com)

EXPERIENCE IT YOURSELF.

# Higher Speed Trains

Dwight to Pontiac



**ILLINOIS  
HIGH-SPEED  
RAIL**

CHICAGO TO ST. LOUIS



Illinois Department  
of Transportation

[www.idothsr.org](http://www.idothsr.org)  
[www.connectthemidwest.com](http://www.connectthemidwest.com)

# Higher Speeds/Better Service

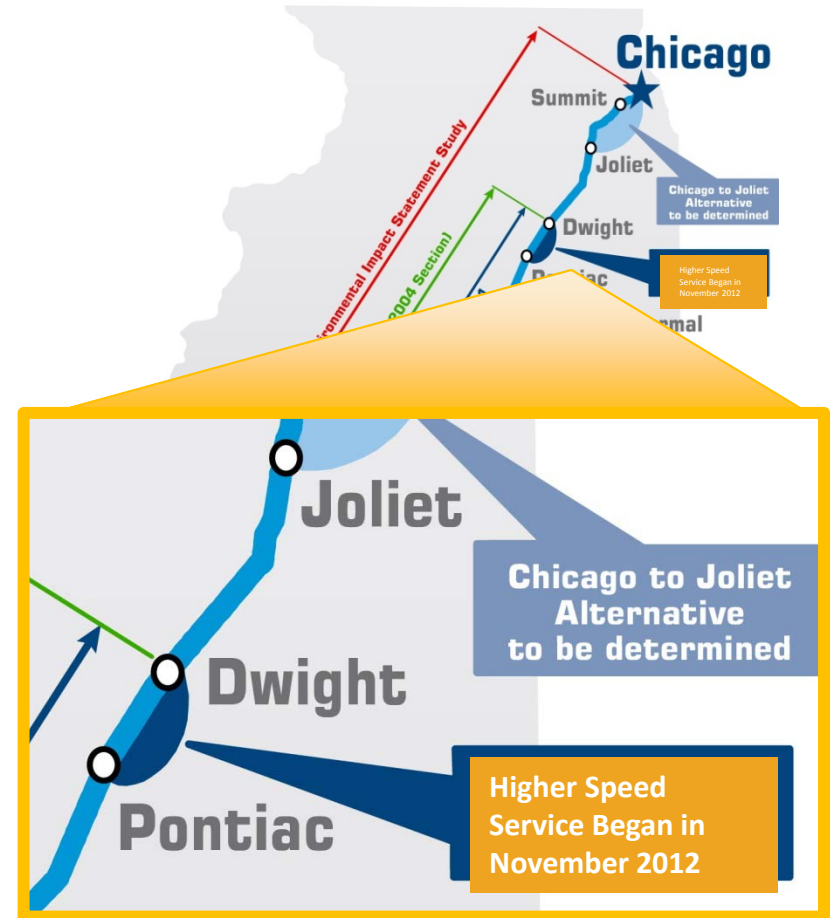
EXPERIENCE IT YOURSELF.

## » Dwight to Pontiac

- Initial segment for higher speed trains started in November

## » Public Outreach Program

- What to expect in your community
- Educational efforts
- Safety improvements



**ILLINOIS  
HIGH-SPEED RAIL**  
CHICAGO TO ST. LOUIS



[www.idothsr.org](http://www.idothsr.org)  
[www.connectthemidwest.com](http://www.connectthemidwest.com)

# Benefits

EXPERIENCE IT YOURSELF.

- » *Safety*
- » *New Passenger Cars and Locomotives*
- » *New Stations*
- » *Environmental*
- » *Service and Reliability*



EXPERIENCE IT YOURSELF.

# Construction



**ILLINOIS  
HIGH-SPEED  
RAIL**

CHICAGO TO ST. LOUIS



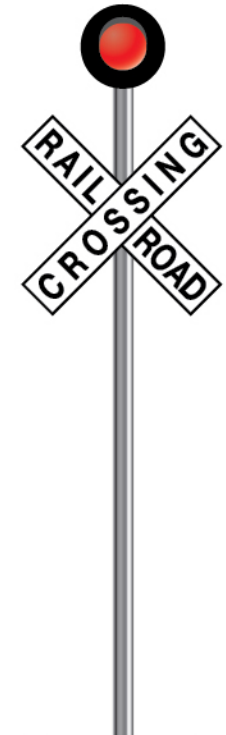
Illinois Department  
of Transportation

[www.idothsr.org](http://www.idothsr.org)

[www.connectthemidwest.com](http://www.connectthemidwest.com)

# Construction: Before & After

EXPERIENCE IT YOURSELF.



# Construction: Before & After

EXPERIENCE IT YOURSELF.



**ILLINOIS  
HIGH-SPEED RAIL**  
CHICAGO TO ST. LOUIS



[www.idothsr.org](http://www.idothsr.org)  
[www.connectthemidwest.com](http://www.connectthemidwest.com)

# Construction: Before & After

Construction

EXPERIENCE IT YOURSELF.



Before



After



**ILLINOIS HIGH-SPEED RAIL**  
CHICAGO TO ST. LOUIS



[www.idothsr.org](http://www.idothsr.org)  
[www.connectthemidwest.com](http://www.connectthemidwest.com)

# Safety

EXPERIENCE IT YOURSELF.



**ILLINOIS  
HIGH-SPEED  
RAIL**

CHICAGO TO ST. LOUIS

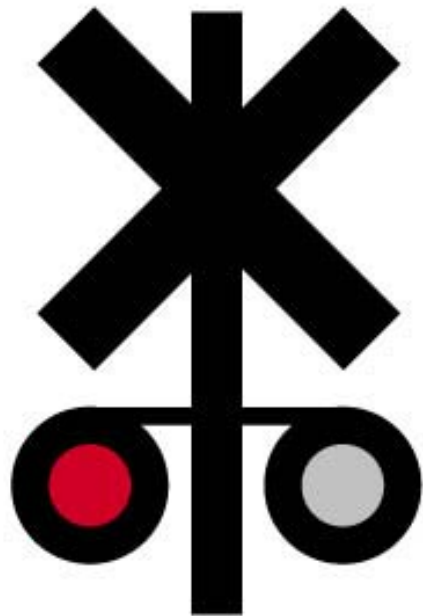


Illinois Department  
of Transportation

[www.idothsr.org](http://www.idothsr.org)  
[www.connectthemidwest.com](http://www.connectthemidwest.com)

# Safety

EXPERIENCE IT YOURSELF.



**OPERATION  
LIFESAVER<sup>®</sup>**

---

**Look, Listen & Live**



**ILLINOIS  
HIGH-SPEED RAIL**  
CHICAGO TO ST. LOUIS

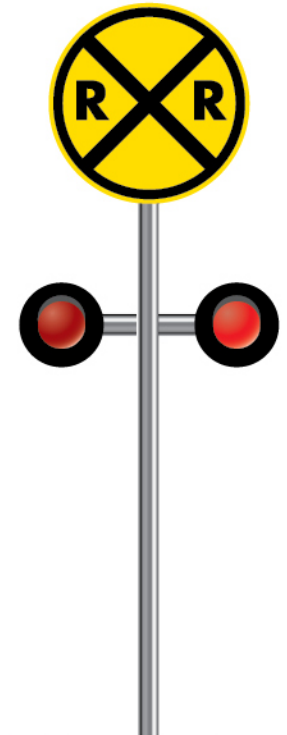


[www.idothsr.org](http://www.idothsr.org)  
[www.connectthemidwest.com](http://www.connectthemidwest.com)

# Safety

Safety

EXPERIENCE IT YOURSELF.



ILLINOIS  
HIGH-SPEED RAIL  
CHICAGO TO ST. LOUIS



[www.idothsr.org](http://www.idothsr.org)  
[www.connectthemidwest.com](http://www.connectthemidwest.com)

# Safety

Safety

EXPERIENCE IT YOURSELF.



118



**ILLINOIS  
HIGH-SPEED RAIL**  
CHICAGO TO ST. LOUIS



[www.idothsr.org](http://www.idothsr.org)  
[www.connectthemidwest.com](http://www.connectthemidwest.com)

# Safety

EXPERIENCE IT YOURSELF.



13A



**ILLINOIS  
HIGH-SPEED RAIL**  
CHICAGO TO ST. LOUIS



[www.idothsr.org](http://www.idothsr.org)  
[www.connectthemidwest.com](http://www.connectthemidwest.com)

# Safety

EXPERIENCE IT YOURSELF.



138



**ILLINOIS  
HIGH-SPEED RAIL**  
CHICAGO TO ST. LOUIS



[www.idothsr.org](http://www.idothsr.org)  
[www.connectthemidwest.com](http://www.connectthemidwest.com)

# Safety

EXPERIENCE IT YOURSELF.



**ILLINOIS  
HIGH-SPEED RAIL**  
CHICAGO TO ST. LOUIS



[www.idothsr.org](http://www.idothsr.org)  
[www.connectthemidwest.com](http://www.connectthemidwest.com)

# Safety



## TRESPASSING

It is illegal for any person to walk on, across, or along the railroad tracks at any place other than an authorized crossing.



ILLINOIS  
HIGH-SPEED RAIL  
CHICAGO TO ST. LOUIS



[www.idothsr.org](http://www.idothsr.org)  
[www.connectthemidwest.com](http://www.connectthemidwest.com)

# Safety

EXPERIENCE IT YOURSELF.



**ILLINOIS  
HIGH-SPEED RAIL**  
CHICAGO TO ST. LOUIS



[www.idothsr.org](http://www.idothsr.org)  
[www.connectthemidwest.com](http://www.connectthemidwest.com)

# Safety

EXPERIENCE IT YOURSELF.



**ILLINOIS  
HIGH-SPEED RAIL**  
CHICAGO TO ST. LOUIS



[www.idothsr.org](http://www.idothsr.org)  
[www.connectthemidwest.com](http://www.connectthemidwest.com)

# Safety

EXPERIENCE IT YOURSELF.



*3,000 lbs.*



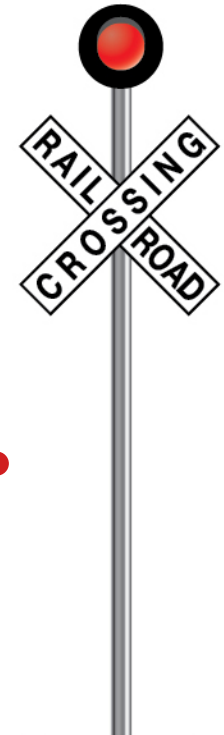
*12 oz.*



*80,000 lbs.*



*12 million lbs.*



**ILLINOIS  
HIGH-SPEED RAIL**  
CHICAGO TO ST. LOUIS



[www.idothsr.org](http://www.idothsr.org)  
[www.connectthemidwest.com](http://www.connectthemidwest.com)

# Approximate Stopping Distance

EXPERIENCE IT YOURSELF.

*At 55 MPH*



**200 Ft**



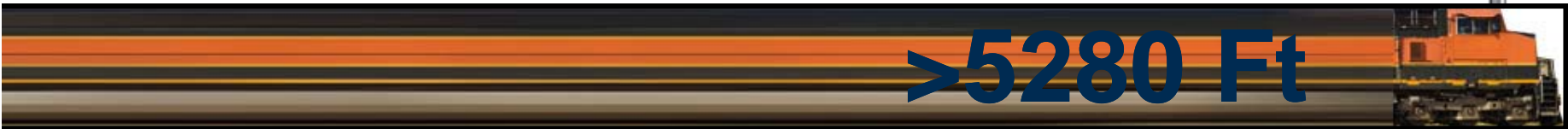
**230 Ft**



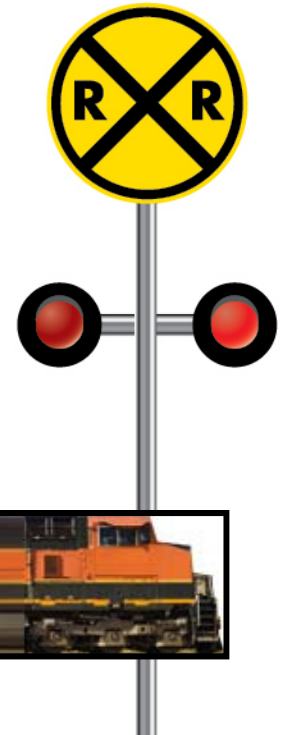
**300 Ft**



**600 Ft**



**>5280 Ft**



**ILLINOIS  
HIGH-SPEED RAIL**  
CHICAGO TO ST. LOUIS



[www.idothsr.org](http://www.idothsr.org)  
[www.connectthemidwest.com](http://www.connectthemidwest.com)

# Safety

Safety

EXPERIENCE IT YOURSELF.



208



**ILLINOIS  
HIGH-SPEED RAIL**  
CHICAGO TO ST. LOUIS



[www.idothsr.org](http://www.idothsr.org)  
[www.connectthemidwest.com](http://www.connectthemidwest.com)

# Safety

EXPERIENCE IT YOURSELF.

For High-Speed trains,  
*gates will be down sooner*  
than for other trains.

The higher the rate of speed  
the *longer it takes to stop.*



# Safety

EXPERIENCE IT YOURSELF.

## Flashing Red Lights Mean Stop

(You may not see an approaching train)



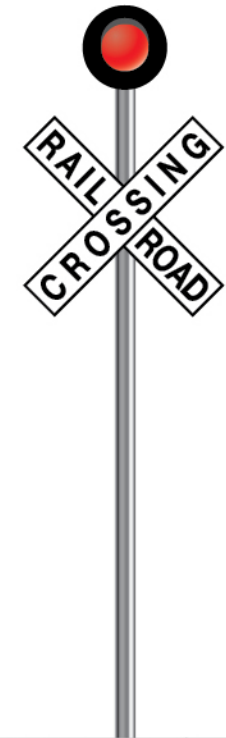
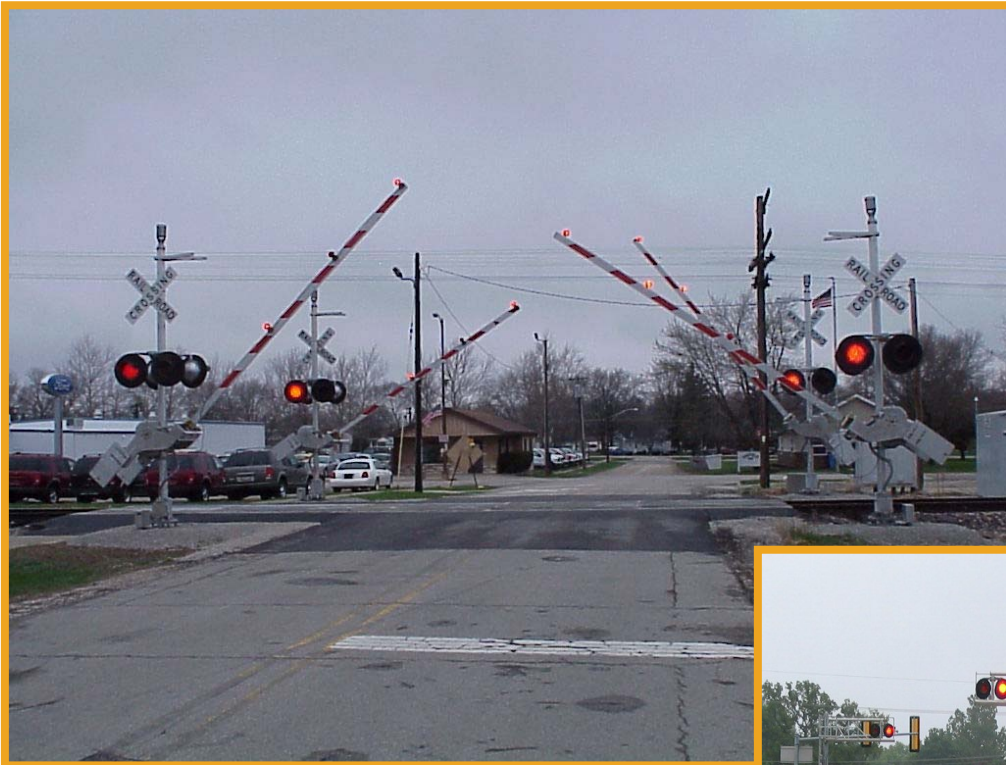
ILLINOIS  
HIGH-SPEED RAIL  
CHICAGO TO ST. LOUIS



[www.idothsr.org](http://www.idothsr.org)  
[www.connectthemidwest.com](http://www.connectthemidwest.com)

# Safety – 4 Quadrant Gates

EXPERIENCE IT YOURSELF.



EXPERIENCE IT YOURSELF.

# Public Involvement



**ILLINOIS  
HIGH-SPEED  
RAIL**

CHICAGO TO ST. LOUIS



Illinois Department  
of Transportation

[www.idothsr.org](http://www.idothsr.org)  
[www.connectthemidwest.com](http://www.connectthemidwest.com)



# Higher Speeds/Better Service

EXPERIENCE IT YOURSELF.

**Safety comes first.  
And second. And third.**

HIGHER SPEED TRAINS  
FROM DWIGHT TO PONTIAC

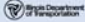


Beginning Fall 2012 there will be higher speed trains in your area. Be aware and educate yourself, family and friends for safety.

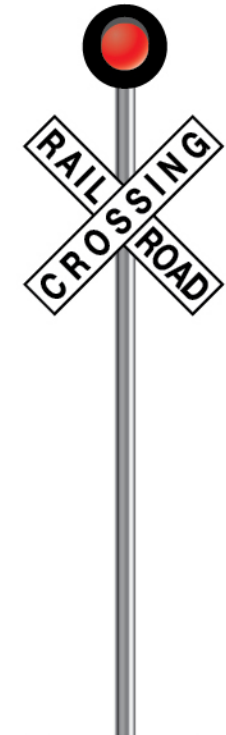
-  Obey all crossing signals.
-  Be safe. Don't walk on or along the tracks.
-  Gates are down longer for higher speed trains.

Scan with your Smartphone  
Learn more about Educational opportunities.

Visit [www.idothsr.org](http://www.idothsr.org) for more information.  
[www.facebook.com/illinoishighspeedrail](https://www.facebook.com/illinoishighspeedrail) Project Hotline 1-855-IDOT-HSR (534-6277)

 **ILLINOIS HIGH-SPEED RAIL**  
CHICAGO TO ST. LOUIS



**ILLINOIS HIGH-SPEED RAIL**  
CHICAGO TO ST. LOUIS



[www.idothsr.org](http://www.idothsr.org)  
[www.connectthemidwest.com](http://www.connectthemidwest.com)

# Higher Speeds/Better Service

EXPERIENCE IT YOURSELF.

It only made sense to build a train  
as smart as the students who ride it.

Taking higher speed rail back to school  
is just smart. While you're saving time,  
you can experience a whole new level  
of comfort and amenities, like Wi-Fi,  
new menu options and completely  
upgraded interiors.

Find out more at [www.idothsr.org](http://www.idothsr.org).

IT'S A WHOLE NEW SERVICE.



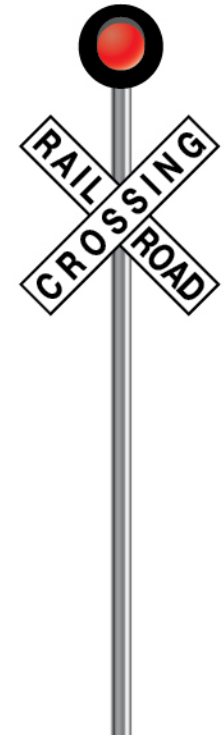
**ILLINOIS  
HIGH-SPEED  
RAIL**

CHICAGO TO ST. LOUIS

Scan with your Smartphone.  
Learn more about  
educational opportunities.



Visit [www.idothsr.org](http://www.idothsr.org) for more information.  
f [www.facebook.com/IllinoisHighSpeedRail](https://www.facebook.com/IllinoisHighSpeedRail) Project Hotline: 1-855-IDOT-HSR (438-8477)



**ILLINOIS  
HIGH-SPEED RAIL**  
CHICAGO TO ST. LOUIS



[www.idothsr.org](http://www.idothsr.org)  
[www.connectthemidwest.com](http://www.connectthemidwest.com)

# Public Involvement Opportunities

EXPERIENCE IT YOURSELF.

Stakeholder Outreach

High School  
Football Games

Local Festivals

Project Website  
[www.idothsr.org](http://www.idothsr.org)

Fact Sheets



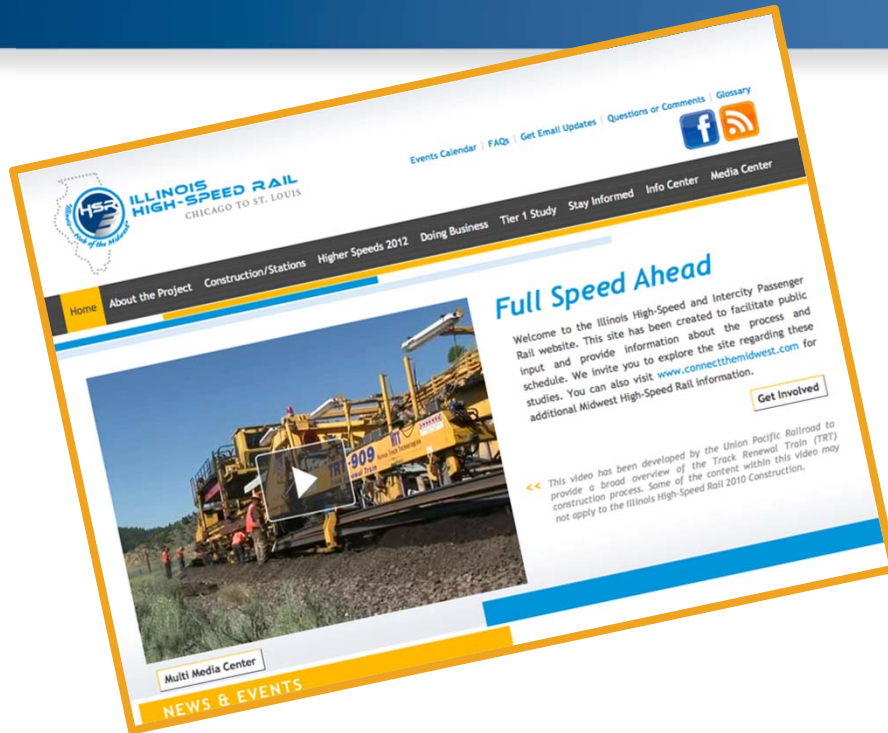
**ILLINOIS  
HIGH-SPEED RAIL**  
CHICAGO TO ST. LOUIS



[www.idothsr.org](http://www.idothsr.org)  
[www.connectthemidwest.com](http://www.connectthemidwest.com)

# Get Your Information from the Source

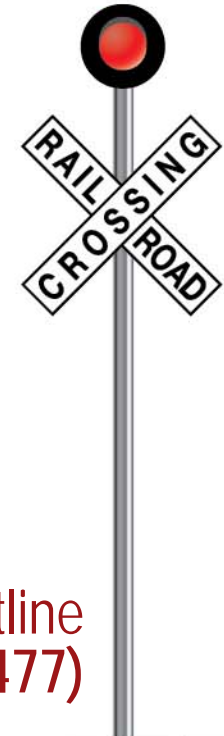
EXPERIENCE IT YOURSELF.



[www.idothsr.org](http://www.idothsr.org)

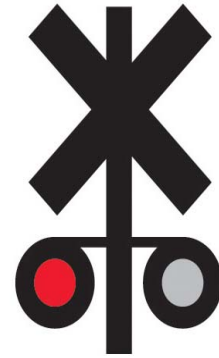


<http://www.facebook.com/illinoishighspeedrail>



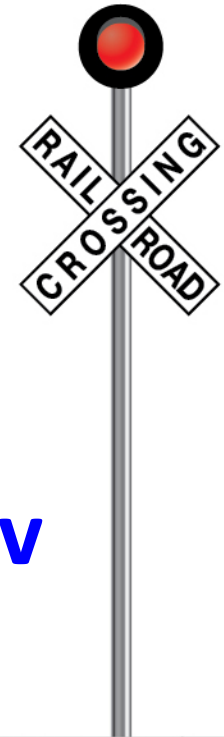
Project Hotline  
1-855-IDOT-HSR (436-8477)

EXPERIENCE IT YOURSELF.



**OPERATION  
LIFESAVER<sup>®</sup>**

**Illinois**



**Chip Pew**  
**(312) 636-3034**  
**[cpew@icc.illinois.gov](mailto:cpew@icc.illinois.gov)**



**ILLINOIS  
HIGH-SPEED RAIL**  
CHICAGO TO ST. LOUIS



[www.idothsr.org](http://www.idothsr.org)  
[www.connectthemidwest.com](http://www.connectthemidwest.com)

EXPERIENCE IT YOURSELF.



# Questions



**ILLINOIS  
HIGH-SPEED  
RAIL**

CHICAGO TO ST. LOUIS



[www.idothsr.org](http://www.idothsr.org)  
[www.connectthemidwest.com](http://www.connectthemidwest.com)

EXPERIENCE IT YOURSELF.

# Thank You



**ILLINOIS  
HIGH-SPEED  
RAIL**

CHICAGO TO ST. LOUIS



Illinois Department  
of Transportation

[www.idothsr.org](http://www.idothsr.org)  
[www.connectthemidwest.com](http://www.connectthemidwest.com)